

Department of Public Health and Community Medicine  
Section of Psychiatry and Clinical Psychology  
University of Verona



WHO Collaborating Centre for Research and  
Training in Mental Health and Service Evaluation

Head: Professor Michele Tansella

## Scientific Report 2010

(with 2010 IF scores)



[www.psychiatry.univr.it](http://www.psychiatry.univr.it)

The WHO Collaborating Centre in Verona is located in a recently refurbished building, within the University General Hospital of Verona (Policlinico G.B. Rossi, Piazzale L.A. Scuro 10, 37134 Verona, Italy). It was designated by WHO as *Collaborating Centre for Research and Training in Mental Health* on **23 February 1987**. According to WHO regulations the designation lasts for four years and may be continued, with periodic reviews by WHO of the scientific performance of the Centre. The designation was confirmed in **1992**. In September **1996** the Centre was re-designated as a **WHO Collaborating Centre for Research and Training in Mental Health and Service Evaluation** and since then this designation was further confirmed in **2001, 2005 and 2009**.

The main research activities, carried out by the six Research Units of the Centre, focus on epidemiological and social psychiatry (including economics and geography of mental health studies), genetics and neuroimaging of schizophrenic and bipolar disorders, clinical psychopharmacology, communication in medicine and evaluation of mental health services. The staff (more than 50 persons) includes psychiatrists, clinical psychologists, computer scientists, physicists, geographers and social scientists, statisticians, technicians and secretaries.

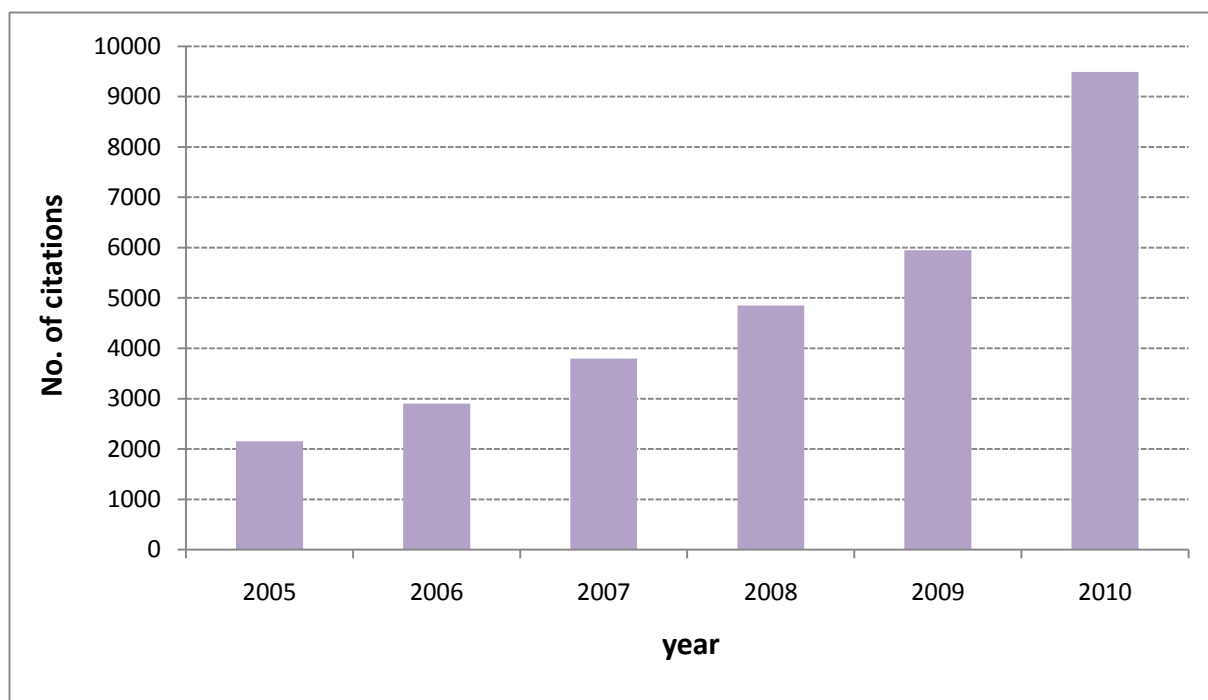
### Total Impact Factor (IF) of Papers Published by Members of the WHO Centre of Verona

2004:	IF 83.134	2008:	IF 144.833
2005:	IF 116.637	2009:	IF 234.473
2006:	IF 76.469	<b>2010:</b>	<b>IF 174.288</b>
2007:	IF 224.870	<b>In press:</b>	<b>IF 292.761</b>

## Table of contents

- No. of citations of all papers published in 1990-2009 by the Heads of Units of the Verona WHO Centre **pag. 3**
- List of peer reviewed Journals that published in 2010 papers by members of our Centre and Impact Factor (2010) **pag. 3**
- H index of scientific staff of the Verona WHO Centre with a tenured position **pag. 4**
- The South-Verona Community-Based Mental Health Service Clinical and Teaching Activities **pag. 6**
- Papers & Books published in 2010 **pag. 9**
- List of peer reviewed Journals that published in 2011 or have in press papers by members of our Centre and Impact Factor (2010) **pag. 13**
- Papers & Books in press **pag. 14**
- Scientific staff **pag. 18**
- Research Units **pag. 19**
- Appointments and administrative positions of members of our Centre **pag. 21**
- Lectures and Seminars given by invited speakers at the Verona WHO Centre **pag. 23**
- Lectures and Seminars given by the Scientific staff of the Verona WHO Centre **pag. 27**
- Research Grants **pag. 34**
- Main ongoing Research Projects 2010-2011 **pag. 37**

**No. of citations, in the years 2005-2010, of all papers published from 1990 onwards by the Heads of the Units of the Verona WHO Centre.**



**List of peer-reviewed Journals that published in 2010 papers by members of our Centre and Impact Factor (2010)**

<b>International Journals</b>	<b>Number of papers</b>	<b>Impact Factor</b>	<b>Total</b>
<i>Acta Psychiatrica Scandinavica</i>	1	3.795	3.795
<i>British Journal of Psychiatry</i>	1	5.947	5.947
<i>British Medical Journal</i>	1	13.471	13.471
<i>Cochrane Database of Systematic Reviews</i>	3	6.186	18.558
<i>CNS Drugs</i>	1	4.497	4.497
<i>Epidemiologia e Psichiatria Sociale</i>	17	2.032	34.544
<i>Evidence Based Mental Health</i>	1	-	-
<i>Experimental Brain Research</i>	1	2.296	2.296
<i>Functional Neurology</i>	1	1.481	1.481
<i>Human Molecular Genetics</i>	1	8.058	8.058
<i>Lancet</i>	1	33.633	33.633
<i>Molecular Psychiatry</i>	1	15.470	15.470
<i>Plos Medicine</i>	1	15.617	15.617
<i>Psychological Medicine</i>	2	5.200	10.400
<i>Schizophrenia Research</i>	1	4.374	4.374
<i>Social Psychiatry and Psychiatric Epidemiology</i>	1	2.147	2.147
<b>TOTAL</b>	<b>35</b>		<b>174.288</b>

## H index of scientific staff of the Verona WHO Centre with a tenured position

\*Department of Medical Sciences, University of Udine and Inter-University Centre for Behavioural Neurosciences (ICBN), University of Udine and University of Verona, Italy.

Scientific staff of the Verona WHO Centre with a tenured position (ISI, Web of Knowledge, database 1990-2011)	h index (total)	h index (2000-2010)
<i>Professor Michele Tansella</i>	33	24
<i>Professor Francesco Amaddeo</i>	14	10
<i>Professor Corrado Barbui</i>	24	24
<i>Dr. Chiara Bonetto</i>	9	9
<i>Dr. Paolo Brambilla*</i>	29	29
<i>Professor Lorenzo Burti</i>	9	6
<i>Dr. Andrea Cipriani</i>	14	14
<i>Dr. Doriana Cristofalo</i>	6	6
<i>Dr. Lidia Del Piccolo</i>	8	8
<i>Dr. Claudia Goss</i>	6	6
<i>Dr. Antonio Lasalvia</i>	11	11
<i>Dr. Maria Angela Mazzi</i>	5	5
<i>Dr. Michela Nosè</i>	13	13
<i>Dr. Gianluca Rambaldelli</i>	6	6
<i>Dr. Michela Rimondini</i>	5	5
<i>Dr. Alberto Rossi</i>	6	6
<i>Professor Mirella Ruggeri</i>	22	18
<i>Dr. Roberta Siani</i>	3	1
<i>Dr. Sarah Tosato</i>	7	7
<i>Professor Christa Zimmermann</i>	14	9

**The Hirsch index (h index)** is an indicator of citations of a researcher's scientific publications, proposed in 2005 by Professor Jorge E. Hirsch, University of California, San Diego, USA (Hirsch, 2005; 2007).

This index may be defined as the number of papers with citation number equal or higher than h (for example h index 5 means that at least 5 papers by that author were cited at least 5 times). Higher the h index, higher is supposed to be the impact of the researcher in his/her scientific community. H index depends from the level of seniority of the researcher.

It has been stated that h index is preferable to other single-number criteria commonly used to evaluate scientific output of a researcher, as follows (Hirsch, 2005):

- (i) **Total number of papers** ( $N_p$ ). Advantage: measures productivity. Disadvantage: does not measure importance or impact of papers.
- (ii) **Total number of citations** ( $N_{c,tot}$ ). Advantage: measures total impact. Disadvantage: hard to find and may be inflated by a small number of "big hits," which may not be representative of the individual if he or she is a coauthor with many others on those papers. In such cases, the relation in Eq. 1 will imply a very atypical value of  $a$ ,  $\approx 5$ . Another disadvantage is that  $N_{c,tot}$  gives undue weight to highly cited review articles versus original research contributions.
- (iii) **Citations per paper** (i.e., ratio of  $N_{c,tot}$  to  $N_p$ ). Advantage: allows comparison of scientists of different ages. Disadvantage: hard to find, rewards low productivity, and penalizes high productivity.
- (iv) **Number of "significant papers,"** defined as the number of papers with  $\geq y$  citations (for example,  $y \geq 50$ ). Advantage: eliminates the disadvantages of criteria *i*, *ii*, and *iii* and gives an idea of broad and sustained impact. Disadvantage:  $y$  is arbitrary and will randomly favor or disfavor individuals, and  $y$  needs to be adjusted for different levels of seniority.
- (v) **Number of citations to each of the  $q$  most-cited papers** (for example,  $q \geq 5$ ). Advantage: overcomes many of the disadvantages of the criteria above. Disadvantage: It is not a single number, making it more difficult to obtain and compare. Also,  $q$  is arbitrary and will randomly favor and disfavor individuals.

To calculate their h index, the researchers may now use **ResearcherID** (<http://www.researcherid.com>), a facility recently made available by ISI Thomson Reuters. **ResearcherID** is a global, multi-disciplinary scholarly research community. With a unique identifier assigned to each author in ResearcherID, you can *eliminate author misidentification* and view an author's citation metrics instantly. Search the registry to find collaborators, review publication lists and explore how research is used around the world.

Many database can be used to calculate the h index. Therefore it may change according to the database and also according to the time span covered by the database. It is therefore necessary to indicate, together with the h index, the database used and the time span (number of years) covered by the database.

**The Library of the School of Medicine of the University of Verona estimates the h index on papers included in the ISI *Web of Knowledge* published from 1990 onwards.**

In several Universities abroad and in some scientific institutions in Italy it is suggested to researchers to include their h index in their CV, so it may be considered, together with other indicators and characteristics, for promotion and selection, when new positions become available.

## References

- Hirsch J.E. (2005) An index to quantify n individual's scientific research output. *Proc.Nat.Acad.Sci USA*, 102, 16569-16572.  
Hirsch J.E. (2007) Does the h index have predictive power? *Proc.Nat.Acad.Sci. USA*, 104, 19193-19198.

# The South-Verona Community-Based Mental Health Service Clinical and Teaching Activities

The WHO Collaborating Centre in Verona is part of the **Section of Psychiatry and Clinical Psychology, Department of Public Health and Community Medicine, University of Verona**, that provides Research, Clinical Activity and Education and Training.

## Clinical Activity

**Clinical activity** takes place in the Academic General Hospital of Verona (*University Department of Psychiatry and Psychiatric University Clinic*), in the *South-Verona Mental Health Centre* (a multi-purpose facility providing outpatient consultations, day care, crisis intervention, home visits and rehabilitation), in the *staffed residential facilities and apartments for long-term patients*, in the *Outpatient Department*, and in other community-based facilities, which constitute an integrated Service: **the South-Verona Community Psychiatric Service (CPS)** (Head: Professor Michele Tansella). Attached to the *University Department of Psychiatry and Psychiatric University Clinic* there are two Units: *The Unit of Psychotherapy* (Professor Lorenzo Burti) that provides individual and family psychotherapy, and the *Unit for Psychology and Therapy of Eating Disorders* (Dr. Roberta Siani) Our clinical facilities include also the *University Department of Psychosomatics and Clinical Psychology* (Head: Professor Mirella Ruggeri), with the attached *Unit of Clinical Psychology and Communication in Medicine* (Professor Christa Zimmermann), that provide specialist outpatient care by psychiatrists and clinical psychologists for patients with panic attacks and obsessive-compulsive disorders, as well as consultations for patients and doctors of other departments of the Verona Academic General Hospital (800 beds), The South-Verona CPS was established in 1978, according to the provision of the Italian Psychiatric Reform, and is responsible for providing comprehensive psychiatric care (prevention, therapy and rehabilitation) for all those living in South-Verona, an area of 100,000 inhabitants.

## The South-Verona Community Psychiatric Service (CPS)

### General organization

The **South-Verona Community Psychiatric Service (CPS)** was designed as a unitary service, in which great emphasis is given to communication between staff and to integration between the various clinical activities. It is first described here in general terms. The various facilities and services available to South-Verona residents are then detailed. Staff members are divided into two multidisciplinary teams, each serving a sub-sector of the South-Verona catchment area. The two teams are organised according to a "single staff module": with the exception of nurses, all staff (psychiatrists, psychologists, social workers) work both inside and outside the hospital setting and retain responsibility for the same patients across different components of the service and through all phases of treatment. There are hospital nurses (who provide 24 hour cover over three shifts in the general hospital ward), hostel nurses, Mental Health Centre nurses and community nurses (who provide cover over two shifts, from 8 a.m. to 8 p.m., and are on call, two at a time, during the weekends and overnight). Of the nursing staff, only the community nurses are assigned to one of the three teams.

This module was designed to ensure continuity of care, both longitudinal continuity (through the different phases of treatment) and cross-sectional continuity (through the different components of the service). Within each team, each patient is assigned to one particular member of the staff (the "case manager"). Case managers may be psychiatrists, psychologists or senior nurses.

The South-Verona CPS is well integrated, allowing patients easy access to most components and easy transfer from one component to another, according to need. A "drop in" approach is encouraged at the Mental Health Centre and patients can seek care from specialist services directly, without referral from GPs. However most patients are referred by GPs and referred back to them by the CPS, when it is felt that less stigmatising care can be provided through primary care. There are good relations between primary and secondary care and regular meetings are held with GPs to discuss how to improve the primary care / mental health service interface

### Components of the CPS

The Mental Health Centre is the linchpin of the **CPS** and is where staff meetings take place and interventions are planned and initiated. The Centre, located in an old, recently refurbished three-storey building with a garden, not far away from the University general hospital, is open on weekdays, from 8 a.m. to 8 p.m. and on Saturdays from 8 a.m. to 5 p.m. Therapeutic programmes include crisis intervention, day care for acute and chronic patients and social skills groups. The Centre also serves as an informal meeting place for Service "users", and it is conceived as a flexible resource whose organisation can be modified from time to time to meet the users' changing needs.

**The psychiatric ward (University Psychiatric Clinic)** is an open ward of 16 beds located in the University general hospital which has in total about 800 beds. It is a traditional hospital ward, similar to all other medical wards in the hospital and its door is locked when there are patients who have been compulsory admitted.

**The outpatient department** provides psychiatric consultations and individual and family therapy. Offices are located in the general hospital and in the Mental Health Centre.

**The consultation liaison service** for other medical and surgical departments (run by the Department of Psychosomatics and Clinical Psychology) maintains psychiatric integration with other hospital-based medical activities and ensures



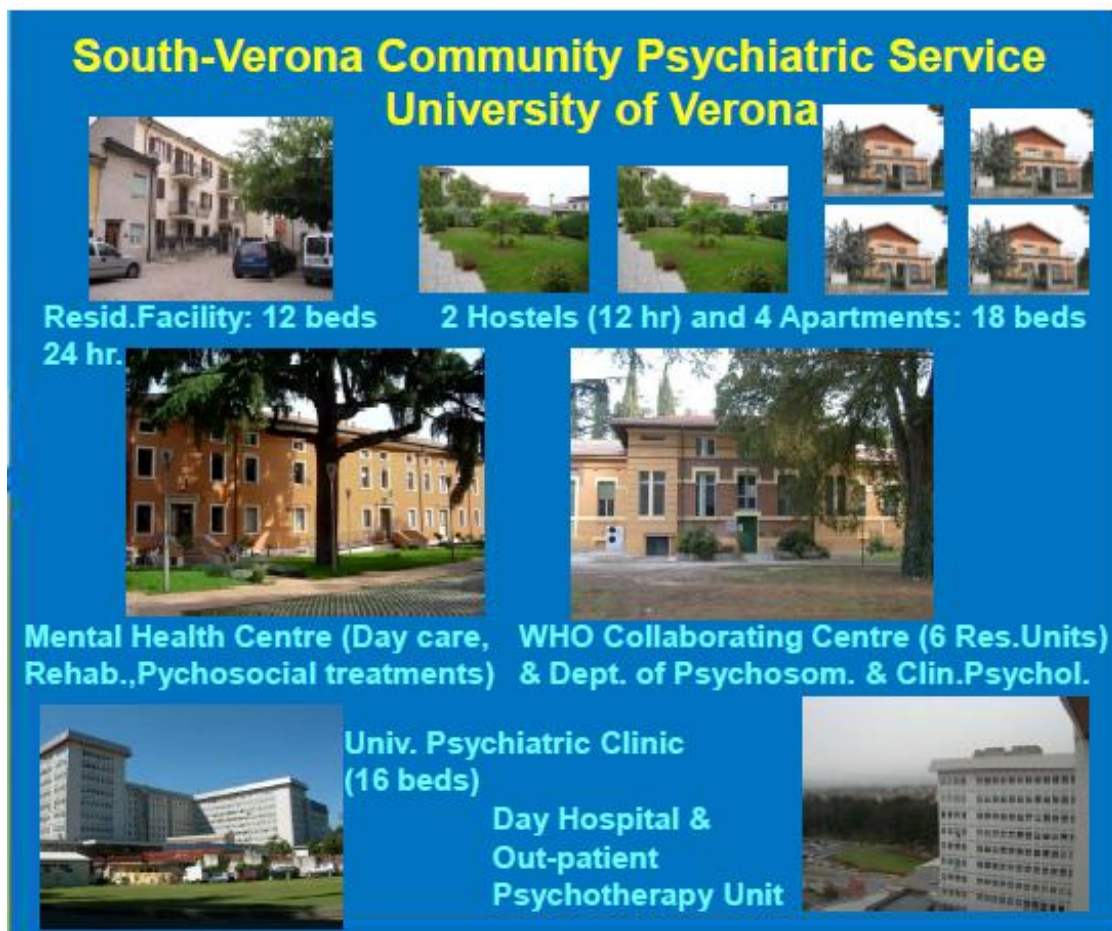
continuing contact with our patients when hospitalised for medical reasons; it runs also a series of out-patients activities, including visits for patients with mental disorders in comorbidity with physical illnesses and patients affected by Panic Disorder.

**The emergency service.** There is a psychiatric emergency service at the general hospital, open 24 hours a day, seven days a week. It is run by a psychiatrist from our team, who is on call. To ensure therapeutic continuity, he/she is usually assisted during working hours by the treatment team members who are (or will be) in charge of the patient requiring the urgent intervention.

Additionally, during **night and week-end**, two psychiatric nurses from our team, supervised by a psychiatrist, are on call to provide care in the supported flats and hostel, as well as at patients' homes.

**Home visits** can be made to provide crisis intervention in response to emergency calls, but for chronic patients these are usually planned in advance and offer regular, long-term support and care to patients and their families with the goal of minimising relapses and hospital admissions. Home visits are highly regarded by the service and are well accepted by patients and families.

**Two group homes and four apartments** (with a total number of 18 beds), offering different levels of supervision, and **one hostel** (with 12 beds, supervised 24 hours a day by support workers and counsellors and occasionally visited by nurses), are also available.



### Distinctive features of South-Verona Community Psychiatric Service

The features of the South-Verona Community Psychiatric Service that could be considered "distinctive" to the service are as follows:

- a. It is not experimental; the South-Verona initiative is a long-term undertaking, implemented by legislation in 1978 and based on a National Act flexible enough to permit development of a system of care which is suited to local needs;
- b. It was designed and is still functioning to substitute, not to supplement, the old hospital-based system of care. The front doors of the mental hospital have been closed to new admissions since May 1978 and to all admissions since January 1982;
- c. The clinical model developed in South-Verona is "systemic" and with a "single-staff module": all staff apart from nurses work both in the hospital and in the community and remain responsible for the care of the same patients across different components of the service and through the different phases of care. The "single staff" module is designed to ensure continuity of care and to encourage commitment and the assumption of full responsibility by the service.
- d. The South-Verona CPS is well integrated, and allows easy and informal access to patients. It is a public service run by the National Health Service. Payment is not required, except for a fee for out-patient visits (this applies only to more affluent patients and for those who are not considered long-term).

e. Every effort is made to meet user's needs with individual care plans. A well established clinical practice in South-Verona is the critical examination of the user's explicit requests, in order to recognise what his/her real needs are. Included in this process is the need to question who originated the request for intervention (the real, often disguised or secret client), besides the usual assessment of psychosocial, precipitating and intervening factors.

f. Although not designed as an experiment, the South-Verona initiative was from the beginning associated with a series of long-term research projects for monitoring and evaluating the changes in service organisation. Many projects use an epidemiological approach and include evaluations of needs, costs and outcomes.

### **Education & Training**

**Education and training** is provided for undergraduate medical students, for post-graduate residents at the *Scuola di Specializzazione in Psichiatria* of the University of Verona (advanced courses in Clinical Psychiatry, Social Psychiatry, Clinical Psychology, Psychotherapy and Clinical Psychopharmacology) (Director: Professor M. Tansella), for post-graduate Ph.D. students in Psychology and Psychiatry (*Dottorato di Ricerca in Scienze Psicologiche e Psichiatriche*) (Director: Professor Mirella Ruggeri), and for undergraduate students in psychosocial rehabilitation (*Corso di Laurea in Tecnica della Riabilitazione Psichiatrica*) (Director: Professor L. Burti). Short courses in Psychiatry, Medical and Clinical Psychology, Psychosomatics, and Psychogeriatrics are also provided for other Schools of Specialisation within the Medical School of the University of Verona.

The South-Verona CPS provides undergraduate and postgraduate students with the opportunity to obtain up-to-date education, and to receive their training in settings identical to those that they will find in their professional life, under the supervision of experienced personnel.



## Papers & Books published in 2010

*This list includes full papers, chapters of books and monographs and volumes published in 2010. The latest Impact Factor (I.F.) scores (2010) are indicated.*

*The list includes also Letters, but only those peer-reviewed and published in outstanding Journals. According to the rules of the Scientific Committee of the Medical School of the University of Verona these Letters are given an I.F. score that is 10% of the original score.*

*Abstracts of papers presented at scientific Meetings and Congresses and posters are **NOT** included.*

For further information and for receiving copies of papers included in this list, please contact our Librarian:

Dr. Renato Fianco      Tel. +39 045 812 6415      [renato.fianco@univr.it](mailto:renato.fianco@univr.it)

### A) PAPERS PUBLISHED IN INTERNATIONAL JOURNALS

- Amadeo F. & Tansella M. (2010). Mortality among people with mental disorders. *Epidemiologia e Psichiatria Sociale* 19, 1-3. **I.F. 2010: 2.032**
- BALANCE investigators and collaborators, Geddes JR, Goodwin GM, Rendell J, Azorin JM, Cipriani A, Ostacher MJ, Morriss R, Alder N, Juszczak E. (2010). Lithium plus valproate combination therapy versus monotherapy for relapse prevention in bipolar I disorder (BALANCE): a randomised open-label trial. *Lancet* 375, 385-95. **I.F. 2010: 33.633**
- Barbui C., Baschiroto C. & Cipriani A. (2010). Commentary: Is aripiprazole as effective as risperidone in people with schizophrenia? *Evidence-Based Mental Health* 13, 51.
- Barbui C., Dua T., van Ommeren M., Yasamy M.T., Fleischmann A., Clark N., Thornicroft G., Hill S. & Saxena S. (2010). Challenges in developing evidence-based recommendations using the GRADE approach: The case of mental, neurological, and substance use disorders. *Plos Medicine* 7, e1000322. **I.F. 2010: 15.617**
- Bellani M., Cerruti S. & Brambilla P. (2010). Orbitofrontal cortex abnormalities in schizophrenia. *Epidemiologia e Psichiatria Sociale* 19, 23-25. **I.F. 2010: 2.032**
- Bellani M., Dusi N. & Brambilla P. (2010). Longitudinal imaging studies in schizophrenia: the relationship between brain morphology and outcome measures. *Epidemiologia e Psichiatria Sociale* 19, 207-210. **I.F. 2010: 2.032**
- Bellani M., Ferro A. & Brambilla P. (2010). The potential role of the parietal lobe in schizophrenia. *Epidemiologia e Psichiatria Sociale* 19, 118-119. **I.F. 2010: 2.032**
- Bellani M., Marzi C.A. & Brambilla P. (2010c). Interhemispheric communication in schizophrenia. *Epidemiologia e Psichiatria Sociale* 19, 19-22. **I.F. 2010: 2.032**
- Bellani M., Marzi C.A., Savazzi S., Perlini C., Cerruti S., Ferro A., Marinelli V., Sponda S., Rambaldelli G., Tansella M. & Brambilla P. (2010). Laterality effects in schizophrenia and bipolar disorder. *Experimental Brain Research* 201, 339-344. **I.F. 2010: 2.296**
- Cipriani A. & Barbui C. (2010). What is a clinical trial protocol? *Epidemiologia e Psichiatria Sociale* 19, 116-117. **I.F. 2010: 2.032**
- Cipriani A. & Geddes J.R. (2010). What is a run-in phase? *Epidemiologia e Psichiatria Sociale* 19, 21-22. **I.F. 2010: 2.032**
- Cipriani A., La Ferla T., Furukawa T., Signoretti A., Nakagawa A., Churchill R., McGuire H. & Barbui C. (2010). Sertraline versus other antidepressive agents for depression. *Cochrane Database of Systematic Reviews* Issue 1. **I.F. 2010: 6.186**
- De Santi K., Cappellari D., Ballette F. & Ruggeri M. (2010). Il Progetto DECO-TRE: un modello di intervento stepped-care integrato per il trattamento della depressione in comorbidità con malattie fisiche nell'Ospedale Generale e nella Medicina di Base. *Epidemiologia e Psichiatria Sociale* 19, 362-374. **I.F. 2010: 2.032**

- Grigoletti L., Amaddeo F., Grassi A., Boldrini M., Chiappelli M., Percudani M., Catapano F., Fiorillo A., Perris F., Bacigalupi M., Albanese P., Simonetti S., De Agostini P., Tansella M. & the I-psycost group (2010). A predictive model to allocate frequent service users of community-based Mental Health Services to different packages of care. *Epidemiologia e Psichiatria Sociale*, 19, 168-177. **I.F. 2010: 2.032**
- Guaiana G., Barbui C. & Cipriani A. (2010). Hydroxyzine for generalised anxiety disorder (Review). *Cochrane Database of Systematic Reviews* Issue 12. **I.F. 2010: 6.186**
- Ingason A., Rujescu D., Cichon S., Sigurdsson E., Sigmundsson T., Pietiläinen OP., Buizer-Voskamp JE., Strengman E., Francks C., Muglia P., Gylfason A., Gustafsson O., Olason P.I., Steinberg S., Hansen T., Jakobsen K.D., Rasmussen H.B., Giegling I., Möller H.J., Hartmann A., Crombie C., Fraser G., Walker N., Lonnqvist J., Suvisaari J., Tuulio-Henriksson A., Bramon E., Kiemenev L.A., Franke B., Murray R., Vassos E., Touloupoulou T., Mühleisen T.W., Tosato S., Ruggeri M., Djurovic S., Andreassen O.A., Zhang Z., Werge T., Ophoff R.A.; GROUP Investigators, Rietschel M., Nöthen M.M., Petursson H., Stefansson H., Peltonen L., Collier D., Stefansson K. & Clair D.M. Copy number variations of chromosome 16p13.1 region associated with schizophrenia. *Molecular Psychiatry* 16, 17-25 **I.F. 2010: 15.470**
- Ingason A., Giegling I., Cichon S., Hansen T., Rasmussen H.B., Nielsen J., Jürgens G., Muglia P., Hartmann A.M., Strengman E., Vasilescu C., Mühleisen T.W., Djurovic S., Melle I., Lerer B., Möller H.J., Francks C., Pietiläinen OP., Lonnqvist J., Suvisaari J., Tuulio-Henriksson A., Walshe M., Vassos E., Di Forti M., Murray R., Bonetto C., Tosato S., GROUP Investigators, Cantor R.M., Rietschel M., Craddock N., Owen M.J., Peltonen L., Andreassen O.A., Nöthen M.M., St Clair D., Ophoff R.A., O'Donovan M.C., Collier D.A., Werge T. & Rujescu D. A large replication study and meta-analysis in European samples provides further support for association of AH11 markers with schizophrenia. *Human Molecular Genetics* 19, 1379-1386. **I.F. 2010: 8.058**
- Lasalvia A. & Tansella M. (2010). Acute in-patient care in modern, community-based mental health services. Where and how? *Epidemiologia e Psichiatria Sociale* 19. **I.F. 2010: 2.032**
- Maggiolo D., Buizza C., Vittorielli M., Lanfredi M., Rossi G., Ricci A., Cicolini A. & Lasalvia A. Patterns of experienced and anticipated discrimination in patients with schizophrenia. Italian results from the INDIGO international multisite project. *Epidemiologia e Psichiatria Sociale* 19, 314-325. **I.F. 2010: 2.032**
- Mazzoncini R., Donoghue K., Hart J., Morgan C., Doody G.A., Dazzan P., Jones P.B., Morgan K., Murray R.M. & Fearon P. (2010). Illicit substance use and its correlates in first episode psychosis. *Acta Psychiatrica Scandinavica* 121, 351-358 **I.F. 2010: 3.795**
- Mejer J., Becker T., Patel A., Robson D., Schene A., Kikkert M., Barbui C., Burti L. & Puschner B. (2010). Effect of medication-related factors on adherence in people with schizophrenia: An European multicentre study. *Epidemiologia e Psichiatria Sociale* 19, 251-289. **I.F. 2010: 2.032**
- Omori I., Watanabe N., Nakagawa A., Cipriani A., Barbui C., McGuire H., Churchill R. & Furukawa T. (2010). Fluvoxamine versus other anti-depressive agents for depression. *Cochrane Database of Systematic Reviews* Issue 3. **I.F. 2010: 6.186**
- Priebe S., Reininghaus U., McCabe R., Burns T., Eklund M., Hansson L., Junghan U., Kallert T., van Nieuwenhuizen C., Ruggeri M., Slade M. & Wang D. (2010). Factors influencing subjective quality of life in patients with schizophrenia and other mental disorders: a pooled analysis. *Schizophrenia Research* 121, 251-258. **I.F. 2010: 4.374**
- Purgato M., Barbui C. & Cipriani A. (2011). Assessing risk of bias in randomized controlled trials. *Epidemiologia e Psichiatria Sociale* 19, 314-325. **I.F. 2010: 2.032**
- Reid S. & Barbui C. (2010). Long term treatment of depression with selective serotonin reuptake inhibitors and newer antidepressants. *British Medical Journal* 340, 1468. **I.F. 2010: 13.471**
- Rimondini M., Del Piccolo L., Goss C., Mazzi M.A., Paccaloni M. & Zimmermann C. (2010). The evaluation of training in patient-centred interviewing skills for psychiatric residents. *Psychological Medicine* 40, 467-476. **I.F. 2010: 5.200**
- Rossi A., Morgan V., Amaddeo F., Sandri M., Grigoletti L., Maggioni F., Ferro A., Rigon E., Donisi V., Vailati Venturi V., Goria F., Skre I., Tansella M. & Jablensky A. Diagnosing psychotic disorders: validity, reliability and applications of the Diagnostic Interview for Psychosis (DIP) Italian version. *Epidemiologia e Psichiatria Sociale* 19, 33-43. **I.F. 2010: 2.032**

- Ruggeri M. (2010). Protocollo Operativo di un intervento stepped care per il trattamento breve e di gruppo della depressione in comorbidità con malattie fisiche. Presentazione. *Epidemiologia e Psichiatria Sociale* 19, :360-361.  
**I.F. 2010: 2.032**
- Ruggeri M. & Tansella M. (2010). Depression and emotional disorders in patients with physical illnesses: scientific knowledge and interventions that innovate practices. *Epidemiologia e Psichiatria Sociale* 19, 95-97.  
**I.F. 2010: 2.032**
- Tansella M. (2010) Alternatives to standard acute in-patient care for people with mental disorders. From systematic description to evaluative research. *British Journal of Psychiatry*. Supplement on *Residential Alternatives to Standard In-Patient Wards*. (ed. S. Johnson) s1-s3.  
**I.F. 2010: 5.947**
- Tansella M. (2010). How Editors of psychiatric journals perceive their role? A follow-up appraisal, seven years after. *Epidemiologia e Psichiatria Sociale* 19, 189-192.  
**I.F. 2010: 2.032**
- Tomasino B., Bellani M., Perlini C., Rambaldelli G., Cerini R., Balestrieri M., Calì S., Versace A., Pozzi Mucelli R., Gasparini A., Tansella M. & Brambilla P. (2010). Altered microstructure integrity and preserved size of the amygdala in schizophrenia: a multimodal MRI study. *Psychological Medicine* 12, 1-11 **I.F. 2010: 5.200**
- Watanabe N., Omori I., Nakagawa A., Cipriani A., Barbui C., McGuire H., Churchill R. & Furukawa T. (2010). Safety reporting and adverse event profile of mirtazapine described in randomized controlled trials in comparison with other classes of antidepressants in the acute-phase treatment of adults with depression. *CNS Drugs* 24, 35-53.  
**I.F. 2010: 4.497**
- Zavradashvili N., Donisi V., Grigoletti L., Pertile R., Gelashvili K., Eliashvili M. & Amaddeo F. (2010). Is the implementation of assertive community treatment in a low-income country feasible? The experience of Tbilisi, Georgia. *Social Psychiatry and Psychiatric Epidemiology* 45, 779-783.  
**I.F. 2010: 2.147**
- Zocante L., Viviani A., Ferro A., Cerini R., Cerruti S., Rambaldelli G., Bellani M., Dusi N., Pozzi Mucelli R., Tansella M., Dalla Bernardina B. & Brambilla P. (2010). Increased parietal volumes relate to delayed language development in autism: a structural MRI study. *Functional Neurology* 25, 217-221.  
**I.F. 2010: 1.481**

## **B) PAPERS AND REVIEWS PUBLISHED IN INTERNATIONAL BOOKS AND MONOGRAPHS**

- Castellani L., Perina A., Murino V., Bellani M., Rambaldelli G., Tansella M. & Brambilla P. (2010). Brain morphometry by probabilistic latent semantic analysis. In *Medical Image Computing and Computer-Assisted Intervention : MICCAI. International Conference on Medical Image Computing and Computer-Assisted Intervention*. Springer: Berlin, pp. 177-184.
- Lehman A.F. & Lasalvia A. (2010). Measures of quality of life for persons with severe mental disorders. In *Mental Health Outcome Measures*, 3<sup>rd</sup> ed. (ed. M. Tansella and G. Thornicroft ). Royal College of Psychiatrists, Gaskell: London, pp. 135-168.
- Ruggeri M. (2010). Satisfaction with mental health services. In *Mental Health Outcome Measures*, 3<sup>rd</sup> ed. (ed. M. Tansella and G. Thornicroft). Royal College of Psychiatrists, pp. 99-115.
- Ruggeri M. (2010). Outcome measurement in Italy. In *Outcome Measurement In Mental Health – Theory and Practice* (ed. T. Trauer). Cambridge University Press: Cambridge, pp. 62-71
- Ruggeri M. & Bertani M.E.(2010). Mental health in Europe: learning from differences In *Principles of Social Psychiatry*, 2<sup>nd</sup> ed. (ed. D. Bughra and C. Morgan). Wiley Blackwell
- Tansella M. & Thornicroft G. (2010). Preface. An evolving perspective of mental health outcome measures. In *Mental Health Outcome Measures*, 3<sup>rd</sup> ed. (ed. G. Thornicroft and M. Tansella). Gaskell: London, pp. XV-XVII.

## **C) PAPERS PUBLISHED IN ITALIAN JOURNALS**

- Lasalvia A., Ricci A., Garzotto N., Cicolini A. , Cristofalo D. & Ariosto F. (2010). Resoconto ed efficacia di un intervento informativo/educativo sullo stigma legato alla malattia mentale rivolto agli operatori della Polizia di Stato di Verona. *Psichiatria di Comunità* 9, 39-49.
- Nosè M., Bonetto C., Rambaldelli G. & Barbui C. (2010). Il Registro degli psicofarmaci. *La Salute e la Città* 3, 15.

Renzi C., Goss C. & Mosconi P. (2010). L'importanza della partecipazione dei pazienti e delle famiglie per ottimizzare l'adesione alla terapia e gli esiti di salute. *Rivista di Immunologia e Allergologia Pediatrica* 5, 3-7.

Scala S. & Lasalvia A. (2010). Revisione sistematica sul ruolo dei deficit neurocognitivi nei familiari di primo grado dei pazienti schizofrenici. *Rivista di Psichiatria* 45, 271-289.

Tansella M. (2010). La cura della depressione nella comunità: nuove forme di integrazione tra medicina di base e Servizi di salute mentale. *Newsletter SIEP*, No. 3, 2-5.

#### **D) PAPERS PUBLISHED IN ITALIAN BOOKS AND MONOGRAPHS**

Grigoletti L. (2010). La ricerca sul trattamento psicosociale della dipendenza da cocaina. In *Il Trattamento nella Dipendenza da Cocaina* ( eds. L. Pagliarani e F. Baldini) Franco Angeli: Milano.

Tansella M. (2010). Una nuova iniziativa editoriale, PEQuOD: Psichiatria epidemiologica, Quaderni per Operatori e Dirigenti. In *Prevenzione della Depressione e del Suicidio: Programma di Intervento Integrato con il Coinvolgimento dei Medici di Medicina Generale*, p. IX-X. Pensiero Scientifico Editore: Roma.

Tansella M. (2010). Presentazione. In *Prevenzione della Depressione e del Suicidio: Programma di Intervento Integrato con il Coinvolgimento dei Medici di Medicina Generale*, p. XIII-XIV. Pensiero Scientifico Editore: Roma.

#### **E) INTERNATIONAL BOOKS**

Thornicroft G. & Tansella M. (eds.) (2010). *Mental Health Outcome Measures*, 3rd. Edition. Gaskell: London.

**List of peer-reviewed Journals that published in 2011 or  
have in press papers by members of our Centre  
and Impact Factor (2010)**

<b>International Journals</b>	<b>Number of papers</b>	<b>Impact Factor</b>	<b>Total</b>
<i>American Journal of Psychiatry</i>	1	12.759	12.759
<i>Applied Health Economics and Health Policy</i>	1	-	-
<i>Biological Psychiatry</i>	2	8.674	17.348
<i>BMJ Clinical Evidence</i>	1	-	-
<i>Brain Research Bulletin</i>	1	2.498	2.498
<i>British Journal of Psychiatry</i>	1	5.947	5.947
<i>British Medical Journal</i>	1	13.471	13.471
<i>Cochrane Database of Systematic Reviews</i>	2	6.186	12.372
<i>Drug Safety</i>	1	3.599	3.599
<i>Epidemiology and Psychiatric Sciences</i>	10	2.032	20.320
<i>European Journal of Public Health</i>	1	2.267	2.267
<i>European Psychiatry</i>	1	3.365	3.365
<i>Gender Medicine</i>	1	1.830	1.830
<i>Human Brain Mapping</i>	1	5.107	5.107
<i>International Journal of Imaging Systems and Technology</i>	1	0.684	0.684
<i>International Journal of Methods in Psychiatric Research</i>	1	2.344	2.344
<i>Journal of Affective Disorders</i>	1	3.740	3.740
<i>Journal of Clinical Psychopharmacology</i>	1	4.857	4.857
<i>Journal of Neural Transmission</i>	2	2.597	5.194
<i>Lancet</i>	2	33.633	67.266
<i>Molecular Psychiatry</i>	2	15.470	30.940
<i>Neuropsychobiology</i>	1	2.567	2.567
<i>Neuroscience Letters</i>	1	2.055	2.055
<i>Patient Education and Counseling</i>	6	2.237	15.659
<i>Plos Medicine</i>	1	15.617	15.617
<i>Progress in Neuro-Psychopharmacology &amp; Biological Psychiatry</i>	2	2.877	5.754
<i>Psychiatry Research</i>	1	2.803	2.803
<i>Psychiatry Research. Neuroimaging</i>	1	2.064	2.064
<i>Psychological Medicine</i>	3	5.200	15.600
<i>Schizophrenia Bulletin</i>	1	8.273	8.273
<i>Social Psychiatry and Psychiatric Epidemiology</i>	4	2.147	8.588
<b>TOTAL</b>	<b>56</b>		<b>292.761</b>

**A) PAPERS ACCEPTED FOR PUBLICATION IN INTERNATIONAL JOURNALS**

- Allen P., Seal M.L., Valli I., Fusar-Poli P., Perlini C., Day F., Wood S.J., Williams S.C. & McGuire P.K. (2011). Altered prefrontal and hippocampal function during verbal encoding and recognition in people with prodromal symptoms of psychosis. *Schizophrenia Bulletin* 37, 746-756 **I.F. 2010: 8.273**
- Amadeo F. & Tansella M. (2011). New perspectives of mental health service research. *Epidemiology and Psychiatric Sciences* 20, 3-6. **I.F. 2010: 2.032**
- Barbui C. (2011). Getting through the quicksand of the relationship between drugs and suicide. *Drug Safety* 34, 397-401. **I.F. 2010: 3.599**
- Barbui C. & Cipriani A. (2011). What are evidence-based treatment recommendations? *Epidemiology and Psychiatric Sciences* 20, 29-31. **I.F. 2010: 2.032**
- Barbui C. & Cipriani A. Cluster randomised trials. *Epidemiology and Psychiatric Sciences* **I.F. 2010: 2.032**
- Barbui C. & Tansella M. (2011). Cochrane reviews impact on mental health policy and practice. *Epidemiology and Psychiatric Sciences* 20, 211-214. **I.F. 2010: 2.032**
- Barbui C., Baschiroto C. & Cipriani A. (2011). EMA must improve the quality of its clinical trial reports. *British Medical Journal* 342, 1187-1189. **I.F. 2010: 13.471**
- Barbui C., Cipriani A., Patel V., Ayuso-Mateos J.L. & van Ommeren M. (2011). Efficacy of antidepressants and benzodiazepines in minor depression. A systematic review and meta-analysis. *British Journal of Psychiatry* 198, 11-16. **I.F. 2010: 5.947**
- Barbui C., Accordini S., Nosè M., Stroup S., Purgato M., Girlanda F., Esposito E., Veronese A., Tansella M., Cipriani A. & CHAT (Clozapine Haloperidol Aripiprazole Trial) Study Group (2011). Aripiprazole versus haloperidol in combination with clozapine for treatment-resistant schizophrenia in routine clinical care: a randomized controlled trial. *Journal of Clinical Psychopharmacology* 31, 266-273. **I.F. 2010: 4.857**
- Bellani M., Baiano M. & Brambilla P. (2011). Brain anatomy of major depression II. Focus on amygdala. *Epidemiology and Psychiatric Sciences* 20, 33-36. **I.F. 2010: 2.032**
- Bellani M., Peruzzo D., Isola M., Rambaldelli G., Perlini C., Baiano M., Cerini R., Andreone N., Barillari M., Pozzi Mucelli R., Balestrieri M., Tansella M., Bertoldo A. & Brambilla P. (2011). Cerebellar and lobar blood flow in schizophrenia: a perfusion weighted imaging study. *Psychiatry Research: Neuroimaging* 193, 46-52. **I.F. 2010: 2.064**
- Bellani M., Dusi N., Yeh P-H., Soares J.C. & Brambilla P. The effects of antidepressants on human brain as detected by imaging studies. Focus on major depression. *Progress in Neuro-Psychopharmacology & Biological Psychiatry* **I.F. 2010: 2.877**
- Benedetti F., Yeh P-H., Bellani M., Radaelli D., Nicoletti M.A., Poletti S., Falini A., Dallspezia S., Colombo C., Scotti G., Smeraldi E., Soares J.C. & Brambilla P. (2011). Disruption of white matter integrity in bipolar depression as a possible structural marker of illness. *Biological Psychiatry* 69, 309-317. **I.F. 2010: 8.674**
- Bensing J., Deveugele M., Moretti F., Fletcher I., van Vliet L., van Bogaert M., Rimondini M. (2011) How to make the medical consultation more successful from a patient's perspective? Tips for doctors and patients from lay people in the United Kingdom, Italy, Belgium and the Netherlands. *Patient Education and Counseling* 84:284-90. **I.F. 2010: 2.237**
- Bertani M., Lasalvia A., Bonetto C., Tosato S., Cristofalo D., Bissoli S., De Santi K., Mazzoncini R., Lazzarotto L., Santi M., Sale A., Scalabrin D., Abate M., Tansella M. & Ruggeri M. on behalf of the PICOS-Veneto Group. The influence of gender on clinical and social characteristics of patients at psychosis onset: A Report from the Psychosis Incident Cohort Outcome Study – PICOS. *Psychological Medicine* **I.F. 2010: 5.200**



- Brambilla P., Cerruti S., Bellani M., Perlini C., Ferro A., Marinelli V., Giusto D., Tomelleri L., Rambaldelli G., Tansella M. & Diwadkar V.A. (2011). Shared impairment in associative learning in schizophrenia and bipolar disorder. *Progress in Neuro-Psychopharmacology & Biological Psychiatry* 35, 1093-1099. **I.F. 2010:2.877**
- Castellani U., Rossato E., Murino V., Bellani M., Rambaldelli G., Tomelleri L., Tansella M. & Brambilla P. Classification of schizophrenia using feature-based morphometry. *Journal of Neural Transmission* **I.F. 2010: 2.597**
- Cipriani A., Furukawa T.A. & Barbui C. (2011). What is a Cochrane review? *Epidemiology and Psychiatric Sciences* 20, 231–233, 2011. **I.F. 2010: 2.032**
- Cipriani A., Barbui C., Salanti G., Rendell J., Brown R., Stockton S., Purgato M., Spinelli L.M., Goodwin G.M. & Geddes J.R. Comparative efficacy and acceptability of antimanic drugs in acute mania: a multiple-treatments meta-analysis. *Lancet* **I.F. 2010:33.633**
- Cipriani A., Barbui C., Butler R., Hatcher S. & Geddes J.R. (2011). Depression in adults: drug and physical treatments. *BMJ Clinical Evidence* 5, 1-40.
- Cipriani A., Koeter M., Furukawa T., Nosè M., Purgato M., Omori I., Trespidi C., Churchill R., Dawson S., & Barbui C. (2011b) Duloxetine versus other anti-depressive agents for depression. *Cochrane Database of Systematic Reviews* **I.F. 2010:6.186**
- Cipriani A., Purgato M., Furukawa T., Imperadore G., Trespidi C., Signoretti A., Churchill R., Dawson S., Watanabe N. & Barbui C. (2011) Citalopram versus other anti-depressive . *Cochrane Database of Systematic Reviews* **I.F. 2010:6.186**
- Corradi Dell'Acqua C., Tomelleri L., Bellani M., Rambaldelli G., Cerini R., Pozzi Mucelli R., Balestrieri M., Tansella M., & Brambilla P. Thalamic-insular dysconnectivity in schizophrenia. Evidence from structural equation modelling. *Human Brain Mapping* **I.F. 2010: 5.107**
- Del Piccolo L., de Haes H., Heaven C., Jansen J., Verheul W., Bensing J., Bergvik S., Deveugele M., Eide H., Fletcher J., Goss C., Humphris G, Kim Y.M., Langewitz W., Mazzi M.A., Mjaaland T., Moretti F., Nübling M., Rimondini M., Salmon P., Sibbern T., Skre I., van Dulmen S., Wissow L., Kim Y.M., Zandbelt L., Zimmermann C. & Finset A. (2011). Development of the Verona Coding Definitions of Emotional Sequences to code health providers' responses (VR-CoDES-P) to patient cues and concerns. *Patient Education and Counseling*, 82, 149-155. **I.F. 2010: 2.219**
- D'Incau P., Barbui C., Tubini J. & Conforti A. (2011). Stressful life events and social health factors in women using anxiolytics and antidepressants: An Italian observational study in community pharmacies. *Gender Medicine* 8, 80-92. **I.F. 2010: 1.830**
- Del Piccolo L., de Haes H., Heaven C., Jansen J., Verheul W., Bensing J., Bergvik S., Deveugele M., Eide H., Fletcher J., Goss C., Humphris G., Kim J.M., Langewitz M., Mazzi M.A., Mjaaland T., Moretti F., Nubling M., Rimondini M., Salmon P., Sibbern T., Skre I., van Dulmen S., Wissow L., Kim Y.M., Zandbelt M., Zimmermann C. & Finset A. (2011). Development of the Verona Coding Definitions of Emotional Sequences to code health providers' responses (VR-CoDES-P) to patient cues and concerns. *Patient Education and Counseling*, 149-155. **I.F. 2010: 2.237**
- Donisi V., Jones J., Pertile R., Salazzari D., Grigoletti L., Tansella M. & Amaddeo F. The difficult task of predicting the costs of community-based mental health care. A comprehensive approach. *Epidemiology and Psychiatric Sciences* **I.F. 2010: 2.032**
- Fagnani C., Bellani M., Tansella M., Balestrieri M., Toccaceli V., Patriarca V., Stazi M.A., & Brambilla P. Investigation of shared genetic effects for psychotic and obsessive symptoms in young adult twins. *Psychiatry Research* 188, 276-282. **I.F. 2010: 2.803**
- Gaebel W., Becker T., Janssen B., Munk-Jorgensen P., Musalek M., Rössler W., Sommerlad K., Tansella M., Thornicroft G. & Zielasek J. European Psychiatric Association guidance on quality of mental health services. *European Psychiatry* **I.F. 2010: 3.365**
- Hansen T., Ingason A., Djurovic S., Melle I., Fenger M., Gustafsson O., Jakobsen K.D., Ramussen H.B., Tosato S., Rietschel M., Frank J., Owen M., Bonetto C., Suvisaari J., Thygesen J.H., Pétursson H., Lönnqvist J., Sigurdsson E., Giegling I., Craddock N., O'Donovan M.C., Ruggeri M., Cichon S., Ophoff R.A., Pietiläinen O., Peltonen L., Nöthen M.M., Rujescu D., St. Clair D., Collier D.A., Andreassen O.A., Werge T. At-risk variant in TCF7L2 for type II diabetes increases risk of schizophrenia. *Biological Psychiatry* 70, 59-63. **I.F. 2010: 8.674**
- Ingason A, Kirov G, Giegling I, Hansen T, Isles A.R, Jakobsen K.D, Kristinsson K.T, le Roux L, Gustafsson O, Craddock N, Möller H, McQuillin A, Muglia P, Cichon S, Rietschel M, Ophoff RA, Djurovic S, Andreassen O.A, Pietiläinen

O.P.H., Peltonen L., Dempster E, Collier D.A., St Clair D, Rasmussen H.B., Glenthøj B.Y., Kiemeny L.A., Franke B., Tosato S, Bonetto C, Saemundsen E, Hreidarsson S.J., GROUP Investigators, Nöthen M.M., Gurling H., O'Donovan M. C., Owen M.J, Sigurdsson E., Petursson H, Stefansson H., Rujescu D., Stefansson K., Werge T. Maternally derived microduplications at 15q11-q13 implicate imprinted genes in psychotic illness. *American Journal of Psychiatry* 168, 408-417 **I.F. 2010: 12.759**

- Ingason A., Rujescu D., Cichon S., Sigurdsson E., Sigmundsson T., Pietiläinen O.P., Buizer-Voskamp J.E., Strengman E., Francks C., Muglia P., Gylfason A., Gustafsson O., Olason P.I., Steinberg S., Hansen T., Jakobsen K.D., Rasmussen H.B., Giegling I., Moller H.-J., Hartmann A., Crombie C., Fraser G., Walker N., Lonnqvist J., Suvisaari J., Tuulio-Henriksson A., Bramon E., Kiemeny L.A., Franke B., Murray R., Vassos E., Touloupoulou T., Muhleisen T.W., Tosato S., Ruggeri M., Djurovic S., Andreassen O.A., Zhang J., Werge T., Ophoff R.A., GROUP Investigators, Rietschel M., Nöthen M.M., Petursson H., Stefansson H., Peltonen L., Collier D., Stefansson K. & Clair D.M. (2011). Copy number variations of chromosome 16p13.1 region associated with schizophrenia. *Molecular Psychiatry* 16, 17-25. **I.F. 2010: 15.470**
- Kikkert M., Koeter M., Dekker J., Burti L., Robson D., Puschner B. & Schene A. (2011). The predictive validity of subjective adherence measures in patients with schizophrenia. *International Journal of Methods in Psychiatric Research* **I.F. 2010: 2.344**
- Lasalvia A. & Tansella M. (2011) Occupational stress and job burnout in mental health. *Epidemiology and Psychiatric Sciences*, 21, **I.F. 2010: 2.032**
- Lasalvia A., Boggian I., Bonetto C., Saggioro V., Piccione G., Zanoni C., Cristofalo D. & Lamonaca D. Multiple perspectives on mental health outcome: needs for care and service satisfaction assessed by staff, patients and family members. *Social Psychiatry and Psychiatric Epidemiology* **I.F. 2010: 2.147**
- Mazzi MA., Bensing J., Rimondini M., Fletcher I., Vliet, L., Zimmermann C., Deveugele M. (in press). How universal are lay people's assessments of physician responses to patients' cues and concerns: an international multicentre study based on videotaped medical consultations. *Patient Education and Counseling* **I.F. 2010: 2.237**
- Mengotti P., D'Agostini S., Terlevic R., De Colle C., Biasizzo E., Londero D., Ferro A., Rambaldelli G., Balestrieri M., Zanini S., Fabbro F., Molteni M. & Brambilla P. (2011). Altered white matter integrity and development in children with autism: a combined voxel-based morphometry and diffusion imaging study. *Brain Research Bulletin* 84, 189-195. **I.F. 2010: 2.498**
- Moretti F., van Vlieth L., Bensing J., Deledda G., Mazzi MA., Rimondini M., Zimmermann C. & Fletcher J. (2011). A standardized approach to qualitative content analysis of focus group discussions from different countries. *Patient Education and Counseling* 82, 420-428. **I.F. 2010: 2.237**
- Moretti F., Fletcher I., Mazzi M., Deveugele M., Rimondini M., Geurts C., Zimmermann C., Bensing J. GULiVer - travelling into the heart of good doctor-patient communication from a patient perspective. Study protocol of an international multicentre study. *European Journal of Public Health* **I.F. 2010: 2.267**
- Nosè M., Mazzi M.A., Esposito E., Bianchini M., Petrosemolo P., Ostuzzi G., Tansella M. & Barbui C. (2011). Adverse effects of antipsychotic drugs: survey of doctors' versus patients' perspective. *Social Psychiatry and Psychiatric Epidemiology* **I.F. 2010: 2.147**
- Pertile R., Donisi V., Grigoletti L., Angelozzi A., Zamengo G., Zulian G. & Amaddeo F. (2011). DRGs and other patient-, service- and area-level factors influencing length of stay in acute psychiatric wards: the Veneto Region experience. *Social Psychiatry and Psychiatric Epidemiology* 46, 651-660 **I.F. 2010: 2.147**
- Peruzzo B., Bertoldo A., Rambaldelli G., Bellani M., Cerini R., Marini S., Pozzi Mucelli R., Gatti R., Tansella M. & Brambilla P. (2011). The impact of schizophrenia on frontal perfusion parameters: a DSC-MRI study. *Journal of Neural Transmission* 118, 563-570. **I.F. 2010: 2.597**
- Sala M., Caverzasi E., Lazzaretti M., Morandotti N., De Vidovich G., Marraffini E., Gambini F., Isola M., De Bona M., Rambaldelli G., d'Allio G., Barale F., Zappoli F. & Brambilla P. Dorsolateral prefrontal cortex and hippocampus sustain impulsivity and aggressiveness in borderline personality disorder. *Journal of Affective Disorders* 131, 417-421. **I.F. 2010: 3.740**
- Steinberg S., Mors O., Borglum A.D., Gustafsson O., Werge T., Mortensen P.B., Andreassen O.A., Sigurdsson A., Thorgeirsson T.E., Botthcher Y., Olason P.I., Ophoff R.A., Cichon S., Gudjonsdottir I.H., Pietiläinen O.P., Nyegaard M., Tuulio-Henriksson A., Ingason A., Hansen H.V., Athanasiu L., Suvisaari J., Lonnqvist J., Paunio T., Hartmann A., Jurgens G., Nordentoft M., Hougaard D., Norgaard-Petersen B., Breuer R., Moller H.-J., Giegling I., Glenthøj B., Rasmussen H.B., Mattheisen M., Bitter I., Rethely J.M., Sigmundsson T., Fossdal R., Thorsteinsdottir U.,

Ruggeri M., Tosato S., Strengman E., Group, Kiemeney L.A., Melle I., Djurovic S., Abramova I., Kaleda V., Walshe M., Bramon E., Vassos E., Li T., Fraser G., Walker N., Touloupoulou T., Yoon J., Freimer N.B., Cantor R.M., Murray R., Kong A., Golimbet V., Jonsson E.G., Terenius L., Agartz I., Petursson H., Nöthen M.M., Rietschel M., Peltonen L., Rujescu D., Collier D., Stefansson H., St Clair D. & Stefansson K. (2011). Expanding the range of ZNF804A variants conferring risk of psychosis. *Molecular Psychiatry* 16, 59-66.

**I.F. 2010: 15.470**

Tansella M. (2011) The new EPS: Epidemiology and Psychiatric Sciences. *Epidemiology and Psychiatric Sciences*

**I.F. 2010: 2.032**

Thornicroft G., Lempp H., & Tansella M. The place of implementation science in the translational medicine continuum. *Psychological Medicine*

**I.F. 2010: 5.200**

Tol W.A., Barbui C., Galappatti A., Silove D., Betancourt T.S., Souza R.O., Golaz A., van Ommeren M. Mental health and psychosocial support in humanitarian settings: linking practice and research. *Lancet*

**I.F. 2010: 33.633**

Tomasino B., Bellani M., Perlini C., Rambaldelli G., Cerini R., Balestrieri M., Calì S., Versace A., Pozzi Mucelli R., Gasparini A., Tansella M. & Brambilla P. (2011). Altered microstructure integrity and preserved size of the amygdala in schizophrenia: a multimodal MRI study. *Psychological Medicine* 41, 301-311.

**I.F. 2010: 5.200**

Tosato S., Bonetto C., Di Forti M., Collier D.A., Cristofalo D., Bertani M., Zanoni M., Marrella G., Lazzarotto L., Lasalvia A., De Gironcoli M., Tansella M., Dazzan P., Murray R.M. & Ruggeri M. (2011). Effect of COMT gene on aggression in a Community cohort of schizophrenic patients. *Neuroscience Letters* 495, 17-21.

**I.F. 2010: 2.055**

Tosato S., Bellani M., Bonetto C., Ruggeri M., Perlini C., Lasalvia A., Sponda S., Rambaldelli G., Cristofalo D., Bertani M.E., Zanoni M., Lazzarotto L., Cerini R., Pozzi Mucelli R., Tansella M., Dazzan P., Di Forti M., Murray R.M., Collier D.A. & Brambilla P. Is NRG1 involved in determining superior temporal gyrus volumes in schizophrenia? Preliminary results. *Neuropsychobiology*

**I.F. 2010: 2.567**

Trespidi C., Barbui C. & Cipriani A. (2011). Why it is important to include unpublished data in systematic reviews. *Epidemiology and Psychiatric Sciences* 20, 133-135.

**I.F. 2010: 2.032**

Ulas A., Duin R.P.W., Castellani U., Loog M., Mirtuono P., Bicego M., Murino V., Bellani M., Cerruti S., Tansella M. & Brambilla P. Dissimilarity-based Detection of Schizophrenia. *International Journal of Imaging Systems and Technology* 1, 179-192.

**I.F. 2010: 0.684**

van Ommeren M., Barbui C., de Jong K., Dua T., Jones L., Perez-Sales P., Schilperoord M., Ventevogel P., Taghi Yasamy M. & Saxena S. (2011). If you could only choose five psychotropic medicines: updating the interagency emergency health kit. *Plos Medicine* 8, e1001030.

**I.F. 2010: 15.617**

Zimmermann C. & De Haes H. (2011). Enhancing the patient position in the world of health care: Contributions from the EACH 2010 conference in Verona (Editorial). *Patient Education and Counseling* 84: 283-286.

**I.F. 2010: 2.237**

Zimmermann C., Del Piccolo L., Bensing J., Bergvik S., De Haes H., Eide H., Fletcher I., Goss C., Heaven C., Humphris G., Kim Y.M., Langewitz W., Meeuwesen L., Nuebling M., Rimondini M., Salmon P., van Dulmen S., Wissow L., Zandbelt L. & Finset A. Coding patient cues and concerns in medical consultations: the Verona Coding Definitions of Emotional Sequences (VR-CoDES). *Patient Education and Counseling* 82, 141-148.

**I.F. 2010: 2.237**

Zulian G., Donisi V., Secco G., Pertile R., Tansella M. & Amaddeo F. (2011) How are caseload and service utilisation of psychiatric services influenced by distance? A geographical approach to the study of community-based mental health services. *Social Psychiatry and Psychiatric Epidemiology*, 46,881-891.

**I.F. 2010: 2.147**

Wladysiuk M., Araszkievicz A., Godman B., Szabert K., Barbui C. & Haycox A. (2011). Influence of patient co-payments on atypical antipsychotic choice in Poland: Implications once generic atypicals are available. *Applied Health Economics and Health Policy* 9, 101-110.

## **B) PAPERS AND REVIEWS ACCEPTED FOR PUBLICATION IN INTERNATIONAL BOOKS AND MONOGRAPHS**

Castellani U., Mirtuono P., Murino V., Bellani M., Rambaldelli G., Tansella M & Brambilla P. A new shape diffusion descriptor for brain classification. In *Medical Image Computing and Computer-Assisted Intervention, MICCAI 2011. Lecture Notes in Computer Science (LNCS)* (ed. G. Fichtinger and T. Peters). Berlin/Heidelberg:Springer.

- Finset A. & Del Piccolo L. Nonverbal communication in clinical contexts. In *Communication in Cognitive Behavioural Therapy* (ed. M. Rimondini). Springer: New York.
- Goss C., Rossi A. & Moretti F. Assessment stage: data gathering and structuring the interview. In *Communication in Cognitive Behavioural Therapy* (ed. M. Rimondini). Springer: New York.
- Goss C. & Moretti F. Providing information and involving patient in the therapeutic process. In *Communication in Cognitive Behavioural Therapy* (ed. M. Rimondini). Springer: New York.
- Lasalvia A. Occupational stress, professional burnout, and job satisfaction among psychiatrists. In *Handbook of Stress in the Occupations* (ed. J. Langan-Fox and C. Cooper). Edward Elgar Publishing: U.K.
- Mazzi M.A. Quantitative methods for the analysis of verbal interactions in psychotherapy. In *Communication in Cognitive Behavioural Therapy* (ed. M. Rimondini). Springer: New York.
- Rimondini M. Background theories and main systems of analysis of communication in CBT. In *Communication in Cognitive Behavioural Therapy* (ed. M. Rimondini). Springer: New York.
- Silverman J. & Rimondini M. Learner-centered interactive methods for improving communication skills. In *Communication in Cognitive Behavioural Therapy* (ed. M. Rimondini). Springer: New York.
- Slade M., Glover G., Thornicroft G. & Tansella M. Measuring the needs of people with mental illness. In *Oxford Textbook of Community Mental Health, 2. ed.* (ed. G. Thornicroft, G. Szukler, K. Mueser and B. Drake). Oxford University Press: Oxford.
- Tansella M. & Thornicroft G. The balanced care model of community-based services in the continuum of mental health care. In *21<sup>st</sup> Century Global Mental Health* (ed. L. Sorel). Jones and Bartlett Publishers: Boston.
- Thornicroft G. & Tansella M. Psychosocial interventions for mental health. In *Randomized Clinical Trials of Nonpharmacologic Treatments* (ed. I. Boutron, Ph. Ravaut and D. Moher).
- Ulas A., Duin R.P.W., Castellani U., Loog M., Bicego M., Murino V., Bellani M., Cerruti S., Tansella M. & Brambilla P. (2010). Dissimilarity-based detection of schizophrenia. Proceedings of ICPR Workshop on *Brain Decoding: Pattern Recognition Challenges in FMRI Neuroimaging*. *IEEEExplore and IEEE CS Digital Library online repositories*.
- Zimmermann C. & de Haes H. The building of working alliance in brief psychotherapies. In *Communication in Cognitive Behavioural Therapy* (ed. M. Rimondini). Springer: New York.

### **C) PAPERS ACCEPTED FOR PUBLICATION IN ITALIAN JOURNALS**

- Del Piccolo L. (2001). Physician-family communication in the Intensive Care Units. *Recenti Progressi in Medicina* 102, 246-252.
- Zoppei S. & Lasalvia A. Le campagne antistigma: davvero utili ed efficaci? Una revisione critica delle iniziative antistigma realizzate in Italia. *Rivista di Psichiatria*

### **D) PAPERS AND REVIEWS ACCEPTED FOR PUBLICATION IN ITALIAN BOOKS AND MONOGRAPHS**

- Lasalvia A. & Ruggeri M.. Qualità di vita nella ricerca sui servizi di salute mentale. In *Qualità della Vita nei Disturbi Mentali, 2. ed.* (ed. H. Katsching, H. Freeman, N. Sartorius and W. Di Munzio). CIC Edizioni Internazionali: Roma.
- Pozzan T., Marella G., Del Piccolo L., Zimmermann C. (2011). Uno sguardo al volto dei più fragili: la comunicazione con pazienti psichiatrici a rischio di condotte aggressive. In *I Vari Volti della Violenza: uno Spazio di Riflessione e Formazione sui Rischi Connessi* (a cura di V. Olivieri). Centro Stampa, Verona, 2011
- Tansella M. (2011) L'irriducibile ricerca di evidenze per classificare i disturbi mentali e per scegliere le cure. Un approccio sostenibile. Presentazione. In *Ipocondria. Guida per il Clinico e Manuale per chi Soffre del Disturbo* (di D. Leveni, M. Lussetti e D. Piacentini). pp. 7-15. Casa Editrice Erickson, Trento.
- Tansella M. (2011) La psichiatria contemporanea tra ricerca per sviluppare le teorie, ricerca per promuovere i cambiamenti e pratica clinica. In *Fondamenti di Psichiatria* (ed. R.M. Murray, K.S. Kendler, P. McGuffin, S. Wessely & D.J.

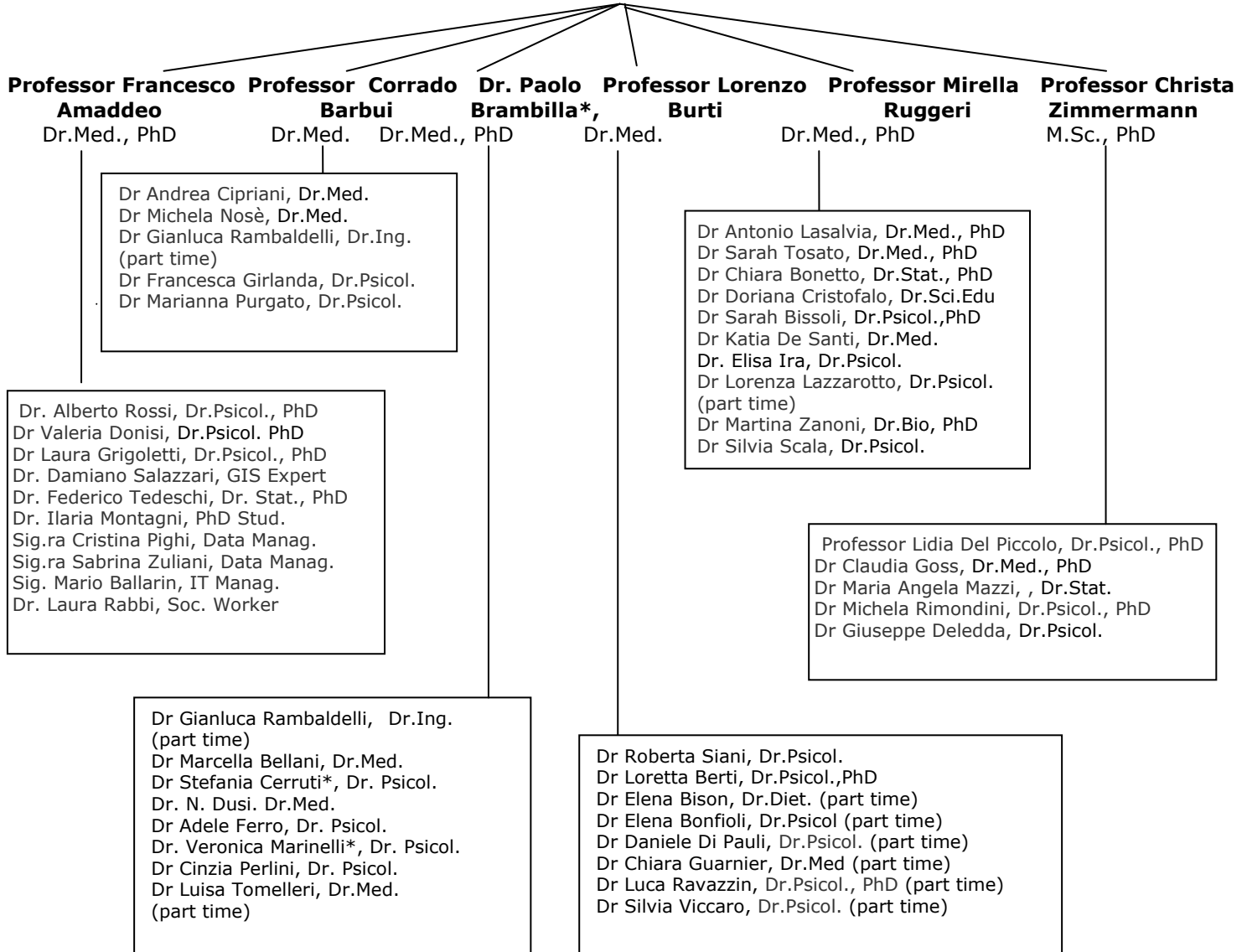
Castle) Edizione Italiana di *Essential Psychiatry* (Cambridge University Press), pp. XIII-XVII CG Edizioni Medico Scientifiche: Torino.

**E) INTERNATIONAL BOOKS ACCEPTED FOR PUBLICATION**

Rimondini M. (ed.) *Communication in Cognitive Behavioural Therapy*. Springer:New York, pp. 273.

## Scientific Staff

**Professor Michele Tansella, Dr.Med.  
(Head)**



\*Department of Medical Sciences, University of Udine and Inter-University Centre for Behavioural Neurosciences (ICBN), University of Udine and University of Verona, Italy



## Research Units

The main research activities carried out by the six Research Units of the Verona WHO Centre are the following:

### 1) Psychiatric Register, Economics and Geography of Mental Health

Coordinator: Professor Francesco Amaddeo

A psychiatric case register (PCR) was started on 31 December 1978 and is used for clinical, administrative and research purposes. For research, the PCR is used for: longitudinal analyses of patterns of care; studies on incidence and prevalence and related factors; services utilisation; comparisons with other case-register areas; and costs of care and outcome. The PCR has facilitated the detailed observation of changes in Italian mental health care since the Italian psychiatric reform.

The Unit has conducted a series of studies in prevalence and incidence samples to explore the relationships between the socio-demographic and clinical characteristics of patients and the costs of community-based mental health care, to study the mortality of psychiatric patients, to assess the association between Socio-Economic Status (SES), services utilisation and costs.

Recently, the Unit has participated to a national study that has permitted to develop a new funding system. The Unit is coordinating Centre for a National study on "Socio-economic status, urbanisation and mental health" that use an health geography approach (both studies have been funded by the Italian Ministry of Health).

The Unit is involved in validating clinical instruments such as the DIP (Diagnostic Interview for Psychosis, Italian Version), and conducting studies about the compassion fatigue of social and clinical workers and the social capital of psychiatric patients.

The Unit is Coordinator of a FP7 international project (Research on Financing systems' Effect on the Quality of Mental Health Care – REFINEMENT) funded by the EU. The overarching aim of the REFINEMENT project is to look at the relationship between different models of health care financing and the extent to which mental health care services can meet the goals of high quality, equity, efficiency and better long term health outcomes. Ultimately we will use the results of our research to make recommendations on best practice health care financing models that may be used in different part of Europe where different mixes of tax, social health insurance, private health insurance and out of pocket payments are used to help achieve these goals. The study involves 9 European Countries (Italy, United Kingdom, Austria, Spain, Norway, Finland, France, Estonia and Romania).

### 2) Clinical Psychopharmacology and Drug Epidemiology

Coordinator: Professor Corrado Barbui

The main research interests of the Unit include: (a) pharmacoepidemiology, oriented to describe the beneficial and harmful effects of psychotropic drugs in ordinary practice; (b) randomised clinical trials, oriented to assess the efficacy and tolerability profile of psychotropic drugs in experimental conditions; (c) systematic reviews, oriented to summarize clinical trial findings using meta-analytical techniques. Recent achievements of the Unit include the development of a psychotropic register that collects information on psychotropic drugs prescribed within the South-Verona catchment area, the development of a network of psychiatric services that is currently collecting patients for a multi-centre clinical trial, the production of systematic reviews in the field of antidepressants and antipsychotics, and the development of tools oriented to assist the World Health Organization to improve the rational use of psychotropic drugs in low and middle income countries. The projects of the Unit are financially supported by organisations not linked with drug companies.

### 3) Brain Imaging and Neuropsychology

Coordinator: Dr. Paolo Brambilla

The Unit of Brain Imaging and Neuropsychology (RUBIN) was first established in the spring of 2003. Since 2005 it is a member of the ICBN InterUniversity Center of Behavioral Neuroscience (University of Udine and University of Verona). Our main interest is to better understand the neurobiological underpinnings of the major psychoses (bipolar disorder, schizophrenia, and unipolar depression) and to study the possible connection with outcome, neuropsychological and biological measures, using a multidimensional approach. The main aim of our research group is to increase the knowledge of possible neural circuitry in these disorders, to study the timing and development of the neuroanatomical alterations, in order to achieve the knowledge for an early detection and treatment of these disorders. The two main fields of research are: 1) Brain Imaging: Different neuroimaging techniques based on Magnetic Resonance Imaging (MRI) are being used to investigate the neurobiological bases of affective and psychotic spectrum disorders, i.e. structural MRI, diffusion tensor imaging (DTI), tractography, perfusion weighted imaging (PWI), MR spectroscopy (MRS), and functional MRI (fMRI). They allow to finely investigate brain microstructure, connectivity, vascular organization, biochemistry and activation. The samples taking part to the studies are assessed at baseline after a 12 month follow up. 2) Neuropsychology: A full neuropsychological assessment

has been designed to assess specific neuropsychological components that may be impaired in major psychoses, such as executive functions, language and cerebral communication. The subjects are studied at baseline and at after a 12 month follow up in order to build a neuropsychological profile of patients to be compared with neuroanatomical and functional data. Moreover, we have recently started a collaboration with the Neuroimmunology Unit of Ospedale San Raffaele in Milan, to characterize the immunological profile of our sample, by the blood level of inflammatory and pro-inflammatory cells and antibodies.

#### **4) Integrating physical health, mental health and human rights**

Coordinator: Professor Lorenzo Burti

The research Unit mainly addresses factors necessary to create and successfully implement policy to promote the human rights, dignity and general health status of psychiatric patients. The Unit is involved in two multicentric three-year EU projects: ITHACA, recently closed and HELPS, in its last stage. Currently, the PHYSICO protocol is ongoing, it address the physical health of mental patients and draws on the synergy between the South Verona Community Mental Health Service and the Department of Prevention (Ulss20 Verona), resulting in the intervention program studied. Moreover, the Unit is working on the Bio.Ve.D.A. project aiming to develop a register of eating-disorders taking advantage of the fact that the Unit of Psychotherapy, which hosts this Research Unit, has been appointed Regional Centre for Eating Disorders. Finally, Self-Help II, now in the phase of processing data, investigates the contribution of a large consumer self-help group, based in Verona, to improve participation of mental patients in society at large.

#### **5) Environmental, Clinical and Genetic Determinants of the Outcome of Mental Disorders**

Coordinator: Professor Mirella Ruggeri

The Unit has worked since the '80s with the aim of characterizing the outcome of the mental disorders. Many longitudinal studies both in prevalence and incidence samples have been carried on to identify predictive patterns of favourable and unfavourable outcomes in naturalistic settings, using a multidimensional approach to include objective and subjective variables, and taking into account the relative role of clinical, social, service variables and genetic factors on the course of illness. Currently, the *Psychosis Incident Cohort Outcome Study (PICOS)*, a multicentric study involving 28 mental health services in the Veneto Region, is ongoing. The PICOS aims to test the relationship between clinical and genetic features of psychosis in an epidemiologically representative sample of first episode psychotic subjects. Recently, the Research Program GET UP (*Genetics, Endophenotypes and Treatment: Understanding early Psychosis*), with Professor Ruggeri as National Coordinator, has been funded by the Ministry of Health. It is constituted by four partner projects Its main axis is a controlled randomized Trial that involves 116 Mental Health Centres covering a 10 million inhabitant catchement area and aims to: **1)** test the feasibility and cost-effectiveness of multi-component psychosocial intervention, fostering evidence-based innovation in the area of FEP; **2)** verify the clinical routine limits of this approach, i.e. identifying barriers that obstacle its application and situations in which this type of treatment might not be effective or appropriate; evaluate t is a cluster randomized, controlled trial; **3)** identify clinical, psychological, and environmental predictors of treatment efficacy in first episode psychosis.

Secondary aims are: 1) to evaluate the role of pharmaco-genetic analysis in improving pharmacological treatment efficacy and 2) to identify morpho-functional and neuropsychological factors influencing stress, treatment response, and outcome .

Moreover, the Unit is collaborating in the SGENE project, a large scale genome-wide association study of schizophrenia addressing variation in expressivity and contribution from environmental factors. Additionally it runs some projects in the area of Liaison Psychiatry with the aim to develop innovative treatments for patients affected by mental disorders in comorbidity with physical illnesses, and evaluate their effectiveness.

#### **6) Clinical Psychology and Communication in Medicine**

Coordinator: Professor Christa Zimmermann

During the last decade, the Unit has developed and standardised several instruments and methodologies to study doctor patient interactions both in Primary Care and in Psychiatry. The Unit has carried out the evaluation of the efficacy of training courses in improving communication skills of General Practitioners and Psychiatrists, and has studied the information-giving process in primary care consultations and in psychiatric outpatient intake interviews. Currently, the Unit coordinates two studies: one on patients' perception of the doctors' clinical communication skills (Verona, Liverpool, Utrecht), the other on the informative needs of breast cancer patients and their involvement in treatment decisions (Verona, Brescia).

## Appointments and administrative positions of members of our Centre

<b>Professor Francesco Amaddeo</b>	<p><b>Scientific Societies and Associations. Executive Committees:</b>  <i>Società Italiana di Psichiatria (Sezione Veneta)</i>(Executive Committee)</p> <p><b>Scientific National Journals</b>  <i>Psichiatria di Comunità</i> (Editorial Board)</p> <p><b>Scientific International Journals</b>  <i>Epidemiology and Psychiatric Sciences</i> (Associate Editor)  <i>Social Psychiatry and Psychiatric Epidemiology</i> (Editor)</p>
<b>Professor Corrado Barbui</b>	<p><b>Scientific Societies and Associations</b>  WHO Guidelines Development Group of the mhGAP Intervention Package (Member)</p> <p><b>Scientific National Journals</b>  <i>Dialogo Sui Farmaci</i> (Editorial Board)  <i>Economia e Politica del Farmaco</i> (Editorial Board)  <i>Informazioni Sui Farmaci</i> (Editorial Board)</p> <p><b>Scientific International Journals</b>  <i>Cochrane Depression, Anxiety, &amp; Neurosis Group - The Cochrane Collaboration</i> (Editorial Board)  <i>Epidemiology and Psychiatric Sciences</i> (Associate Editor)  <i>European Psychiatry</i> (Editorial Board)  <i>Evidence Based Mental Health</i> (Associate Editor)  <i>Internet Mental Health</i> (Editorial Board)</p>
<b>Dr. Paolo Brambilla</b>	<p><b>Scientific Societies and Associations</b>  Collegium Internationale Neuro-Psychopharmacologicum (CINP) (member)  World Federation of Societies of Biological Psychiatry (WFSBP) (member)  European College of Neuropsychopharmacology (ECNP) (member)  Neuroimaging section of the Association of European Psychiatrists (AEP) (member)  Association of European Psychiatrists (AEP) (member)  Schizophrenia International Research Society (SIRS) (member)  Comitato Tecnico Scientifico della “Fondazione Imago-7”  Membro del “Neuroimaging Network” dell’ECNP networks initiative  Membro Fondatore dell’associazione culturale “Loco&amp;motiva”</p> <p><b>Scientific National Journals</b>  <i>Epidemiology and Psychiatric Sciences</i> (Editorial Board)  <i>Minerva Psichiatrica</i> (Editorial Board)</p> <p><b>Scientific International Journals</b>  <i>European Psychiatry</i> (Advisory Board)  <i>The International Journal of Mental Health</i> (Editorial Board)  <i>The Open Neuroimaging Journal</i> (Editorial Board)  <i>Psychiatry Research: Neuroimaging</i> (Editorial Board)</p>
<b>Professor Lorenzo Burti</b>	<p><b>Scientific Societies and Associations. Executive Committees:</b>  Società Italiana di Riabilitazione Psicosociale (SIRP) – Honorary President <a href="#">Funding</a>  Member of the World Association for Psychosocial Rehabilitation</p> <p><b>Scientific International Journals</b>  <i>Community Mental Health Journal</i> (International Correspondent)  <i>Epidemiology and Psychiatric Sciences</i> (Editorial Board)</p>

<b>Dr Andrea Cipriani</b>	<b>Scientific International Journals</b> <i>Clinical Evidence: Depressive Disorders in Adults</i> - BMJ Publishing Group (Review Team Co-ordinator) <i>Cochrane Depression, Anxiety, &amp; Neurosis Group</i> , The Cochrane Collaboration (Editorial Board) <i>Current Drug Therapy</i> (Advisory Board) <i>Epidemiology and Psychiatric Sciences</i> (Editorial Board)
<b>Dr Antonio Lasalvia</b>	<b>Scientific National Journals</b> <i>Psichiatria di Comunità</i> (Executive Board) <b>Scientific International Journals</b> <i>Epidemiology and Psychiatric Sciences</i> (Associate Editor)
<b>Dr Michela Rimondini</b>	<b>Scientific Societies and Associations. Executive Committees:</b> European Association of Communication in Healthcare (Teaching Board)
<b>Professor Mirella Ruggeri</b>	<b>Scientific Societies and Associations. Executive Committees:</b> Società Italiana di Epidemiologia Psichiatrica (SIEP) (Past President) European Network for Mental Health Services Evaluation - ENMESH (Chairperson) International Federation of Psychiatric Epidemiology (IFPE) (Board Member) Association of European Psychiatrists (EPA) – (Section of Epidemiology and Social Psychiatry) (Board Member) <b>Scientific National Journals</b> <i>Psichiatria di Comunità</i> (Editorial Board) <b>Scientific International Journals</b> <i>Epidemiology and Psychiatric Sciences</i> (Associate Editor) <i>Social Psychiatry and Psychiatric Epidemiology</i> (Editorial Board)
<b>Professor Michele Tansella</b>	<b>Scientific Societies and Associations. Executive Committees:</b> Società Italiana di Epidemiologia Psichiatrica (Honorary President) Association of European Psychiatrists (Section of Epidemiology and Social Psychiatry) World Psychiatric Association (Section on Epidemiology and Public Health) Comitato Tecnico Scientifico (CTS) dell'IRCS – Fatebenefratelli di Brescia Expert Advisory Panel on Mental Health, World Health Organization <b>Scientific National Journals</b> <i>Psichiatria di Comunità</i> (Advisory Board) <i>Rivista di Psichiatria</i> (Advisory Board) <b>Scientific International Journals</b> <i>Archivos de Psiquiatria</i> (Advisory Board) <i>Acta Psychiatrica Scandinavica</i> (Advisory Board) <i>British Journal of Psychiatry</i> (International Editorial Board) <i>Early Intervention in Psychiatry</i> (Advisory Board) <i>Epidemiology and Psychiatric Sciences</i> (Chief Editor) <i>European Journal of Psychiatry</i> (Advisory Board) <i>International Journal of Mental Health Systems</i> (Advisory Board) <i>International Journal of Methods in Psychiatric Research</i> (Advisory Board) <i>International Review of Psychiatry</i> (Advisory Board) <i>Psychological Medicine</i> (Advisory Board) <i>Social Psychiatry and Psychiatric Epidemiology</i> (Editor) <i>Socijalna Psihijatrija</i> (Advisory Board) <i>World Psychiatry</i> (Advisory Board)
<b>Professor Christa Zimmermann</b>	<b>Scientific International Journals</b> <i>Epidemiology and Psychiatric Sciences</i> (Editorial Board) <i>Patient Education and Counseling</i> (Associate Editor) <b>International committees</b> Member of EuroPsy committee (AIP delegate) for psychotherapy certification

## Lectures and Seminars given by invited speakers at the Verona WHO Centre

The WHO Collaborating Centre and the Section of Psychiatry and Psychology have organized the following **CONFERENCES and EVENTS:**

### **“Innovative Interventions for Depression and Emotional Disorders in Patients with Physical Illnesses”**

(Verona, 26 febbraio 2010).

- Susan Block
- Sir David Goldberg
- Jeffrey Gonzalez
- Hanneke de Haes
- Carmine Pariante
- Davide Cappellari
- Katia De Santi
- Luigi Grassi
- Marco Rigatelli
- Mirella Ruggeri
- Christa Zimmermann

### **“Counseling and Brief Cognitive Behavioural Therapy for Patients with Depression in Comorbidity with Medical Illness”**

(Verona, 27 February 2010)

- Susan Block
- Jeffrey Gonzalez

### **Verona Network on Sequence Analysis.**

#### **VIII invitational workshop:**

#### **The applications of the Verona Coding Definitions of Emotional Sequences (VR-CoDES) and future directions**

(Verona, 19-20 March 2010)

- Jozien Bensing (Nivel Utrecht, NL)
- Hanneke de Haes (University Amsterdam, NL)
- Lidia Del Piccolo (University Verona, IT)
- Giuseppe Deledda (University Verona, IT)
- Stephanie Demaesschalck (University Gent, BE)
- Myriam Deveugele (Gent, BE Gent, BE)
- Hilde Eide (University Oslo, NO)
- Arnstein Finset (University Oslo, NO)
- Ian Fletcher (University Liverpool, UK)
- Claudia Goss (University Verona, IT)
- Cathy Heaven (Christie NHS Foundation Trust, Manchester, UK)
- Lena Heyn (University Oslo, NO)
- Gerry Humphris (University St. Andrews, UK)
- Maria Angela Mazzi (University Verona, IT)
- Trond Mjaaland (University Oslo, NO)
- Francesca Moretti (University Verona, IT)
- Matthias Nuebling (Empirische Beratung, Freiburg, DE)
- Michela Rimondini (University Verona, IT)
- Peter Salmon (University Liverpool, UK)
- Ingunn Skre (University Tromso, NO)
- Ellen Smets (University Amsterdam, NL)
- Sandra van Dulmen (Nivel Utrecht, NL)
- Torun Vatne (University Oslo, NO)
- Larry Wissow (Johns Hopkins, Baltimore, USA)
- Bridget Young (University Liverpool, UK)
- Christa Zimmermann (University Verona, IT)

**Corso di Perfezionamento Avanzato: Implementazione e Valutazione di Interventi Innovativi per i Pazienti all'Esordio Psicotico ed i loro Familiari nei Dipartimenti di Salute Mentale (Dir. Mirella Ruggeri). *Primo Modulo: Working with families of people with psychosis***

(Verona, 26-27 April 2010)

- Elisabeth Kuipers
- Paul Bebbington
- Juliana Onwumere
- Giovanni Patelli
- Mirella Ruggeri

**Corso di Perfezionamento Avanzato: Implementazione e Valutazione di Interventi Innovativi per i Pazienti all'Esordio Psicotico ed i loro Familiari nei Dipartimenti di Salute Mentale (Dir. Mirella Ruggeri).**

*Secondo Modulo: La conoscenza, la volontà e l'ottimismo: il Programma strategico GET UP per le persone all'esordio psicotico*

(Verona, 27-28 April 2010)

- Arnaldo Ballarini
- Francesco Barale
- Ludovico Cappellari
- Paolo Brambilla
- Giovanni De Girolamo
- Angelo Fioritti
- Massimo Gennarelli
- Lorenza Magliano
- Anna Meneghelli
- Flavio Nosè
- Mirella Ruggeri

**“Nuove frontiere per I DCA: tra innovazione e realtà”**

(Verona, 7 May 2010)

- Dr. Giovanni Abbate Daga
- Prof. Matteo Balestrieri
- Prof. Ottavio Bosello
- Prof. Lorenzo Burti
- Dr. Lorenza Carli
- Dr. Andrea Cipriani
- Dr. Concetta Salvo
- Prof. Angela Favaro
- Dr. Francesca Fontana
- Dr. Giuseppe Migliorini
- Dr. Marita Pozzato
- Dr. Pierandrea Salvo
- Prof. Paolo Santonastaso
- Dr. Roberta Siani
- Dr. Patrizia Todisco
- Dr. Tiziana Zanetti

**Corso di Perfezionamento Avanzato: Implementazione e Valutazione di Interventi Innovativi per i Pazienti all'Esordio Psicotico ed i loro Familiari nei Dipartimenti di Salute Mentale (Dir. Mirella Ruggeri). *Terzo Modulo: Lavorare in Equipe***

(Verona, 8 June 2010)

- Federico Galvan
- Rita Roncone
- Mirella Ruggeri
- Christa Zimmemann

**“Validity of diagnosis in psychiatric case registers-an example from the FINN study in northern Norway”**

(Verona, 24 June 2010)

- Terje Øiesvold
- Vidje Hansen



**“The Diagnostic Interview for Psychosis (DIP), validation and use of a diagnostic interview in clinical practice.**

(Verona, 24-25 June 2010).

- Professor Francesco Amaddeo (Centro OMS di Ricerca sulla Salute Mentale, Verona).
- Professor Ingunn Skre (Department of Psychiatry, University of Tromsø, Norway , and University Hospital of Northern Norway)
- Dr. Alberto Rossi (Centro OMS di Ricerca sulla Salute Mentale, Verona).
- Dr. Caroline Spant Skorven (Department of Psychiatry, University of Tromsø, Norway , and University Hospital of Northern Norway)
- Dr. Guro Mikalsen (Department of Psychiatry, University of Tromsø, Norway , and University Hospital of Northern Norway)
- Dr. Terje Øiesvold (Department of Psychiatry, University of Tromsø, Norway , and University Hospital of Northern Norway)
- Professor Vidje Hansen (Department of Psychiatry, University of Tromsø, Norway , and University Hospital of Northern Norway)

**“Presentazione risultati preliminari a 6 mesi del progetto di ricerca multicentrico "Urbanizzazione, Status socio-economico e salute mentale”**

(Verona, 16 July 2010)

- Francesco Amaddeo
- Valeria Donisi
- Riccardo Pertile
- Andrea Fiorillo
- Linda Confalonieri
- Corrado De Rosa

**“SEMINARIO DI RICERCA HELPS: European Network for Promoting the Health of Residents in Psychiatric and Social Care Institution”**

(Verona, 4 August 2010)

- Michele Tansella
- Gabriele Romano
- Massimo Valsecchi
- Lorenzo Burti, Loretta Berti
- Prisca Weiser

**“European Network for Promoting the Health of Residents in Psychiatric and Social Care Institutions: il pacchetto HELPS per la promozione della salute fisica, training di colloqui o motivazionale adattato per la promozione della salute dfisica in pazienti con disturbi mentali”**

Verona, 5 August 2010)

- Dr. Loretta Berti
- Prof. Lorenzo Burti
- Dr. Prisca Weiser

**“Methylphenidate in the Treatment of Adult ADHD”**

(Verona, 18 August 2010)

- Dr. Markus Kösters

**“Iperglicemia, QTc, iperprolattinemia e disturbi del movimento: istruzioni per l'uso degli antipsicotici”**

Quinta giornata veronese di informazione indipendente sugli psicofarmaci”

(Verona, 17 September 2010).

- Corrado Barbui (Centro OMS di Ricerca sulla Salute Mentale, Verona).
- Antonio Addis (European Medicines Agency, Londra).
- Vittorio Bertelè (Istituto di Ricerche Farmacologiche Mario Negri, Milano)
- Andrea Cipriani (Centro OMS di Ricerca sulla Salute Mentale, Verona).
- Riccardo Bonadonna (Università di Verona)
- Flavio Ribichini (Università di Verona)
- Emilio Sacchetti (Università di Brescia)
- Benedetto Saraceno (Università di Ginevra)
- Michele Tansella (Direttore. Centro OMS di Ricerca sulla Salute Mentale, Verona)
- Michele Tinazzi (Università di Verona)

**“Quinta giornata veronese di informazione indipendente sugli psicofarmaci- Iperglicemia, QTc, iperprolattinemia e disturbi del movimento: istruzioni per l’uso degli antipsicotici”**

(Verona, 17 September 2010)

- Antonio Addis
- Corrado Barbui
- Andrea Cipriani
- Flavio Ribichini
- Benedetto Saraceno
- Michele Tinazzi

**“La promozione di corretti stili di vita in ambito psichiatrico”**

(Verona, 8 October 2010)

- Dr. Lucia De Noni
- Prof. Lorenzo Burti
- Dr. Loretta Berti
- Giuseppina Leone
- Dr. Sergio Nascimbeni
- Dr. Massimo Valsecchi
- Dr. Susanna Morgante
- Dr. Linda Chioffi
- Dr. Paola Ciddio
- Dr. Diego Soave
- Dr. Laura Valenari

**“Olanzapina pamoato: uno sguardo agli studi registrativi ed informazioni per un uso corretto e sicuro”**

(Verona, 2 November 2010)

- Massimo Miele

**“Disuguaglianze e Salute Mentale”**

(Verona, 26 November 2010).

- Prof. Francesco Amaddeo (Centro OMS di Ricerca sulla Salute Mentale, Verona).
- Professor Michele Tansella (Direttore. Centro OMS di Ricerca sulla Salute Mentale, Verona)
- Professor Luis Salvador-Carulla (University of Cadiz, Spain)
- Dr. Lorenzo Rampazzo (Servizio Tutela Salute Mentale, Regione Veneto)
- Professor Giuseppe Costa (Università degli Studi di Torino, Dipartimento di Scienze Cliniche e Biologiche – Azienda Ospedaliera San Luigi Gonzaga- Torino, Servizio Regionale di Riferimento per l’Epidemiologia)
- Dr. Giorgio Cerati (Dipartimento Salute Mentale, A. O. di Legnano, Milano)
- Dr. Antonio Lora (Dipartimento di Salute Mentale, Azienda Ospedaliera di Lecco)
- Dr. Jane Boydell ( Institute of Psychiatry King’s college, London)
- Professor Carlos Garcia-Alonso (Operations Research and Information Systems, ETEA, University of Cordoba, Spain)
- Dr. Mauro Percudani (Dipartimento di Salute Mentale, Azienda Ospedaliera “G.Salvini”
- Garbagnate Milanese, Milano)
- Dr. Andrea Angelozzi (Dipartimento di Salute Mentale, ULSS9 Treviso)
- Dr. Valeria Donisi (Centro OMS di Ricerca sulla Salute Mentale, Verona).
- Dr. Andrea Fiorillo (Dipartimento di Psichiatria, Università di Napoli, SUN)

**Corso di Perfezionamento Avanzato: Implementazione e Valutazione di Interventi Innovativi per i Pazienti all’Esordio Psicotico ed i loro Familiari nei Dipartimenti di Salute Mentale (Dir. Mirella Ruggeri).**

***Quarto Modulo: Advanced Procedures for the Cognitive-Behavioural Treatment of patients at the psychosis onset***

(Verona, 13-14 December 2010)

- Tali Corona Mattioli
- Chris Jackson
- Anna Meneghelli
- Gabriele Romano
- Mirella Ruggeri
- Michele Tansella

## Lectures and Seminars given by the Scientific staff of the Verona WHO Centre

### Lectures and Seminars given in Italy:

Dr. R. Mazzoncini

20 January 2010, Verona

**“Prepulse Inhibition of the Startle Reflex e rilevanza nella ricerca sulle psicosi”**

Professor C. Barbui

28-29 January 2010. Genova. Società Italiana di Psichiatria

**“Dalle sperimentazioni randomizzate alle metanalisi (e viceversa): strumenti per modificare la pratica clinica. La ricerca in psichiatria in Italia: stato dell’arte e prospettive future”**

Professor M. Ruggeri

28 January 2010, Genova. Convegno Società Italiana di Psichiatria (SIP) Sezione Ligure “La ricerca psichiatrica in Italia: stato dell’arte e prospettive future”

**“Prospettive di ricerca in psichiatria tra indagini eziopatogenetiche e studi sperimentali per promuovere i cambiamenti”**

Dr. A. Lasalvia

28 January 2010, Genova. Convegno Società Italiana di Psichiatria (SIP) Sezione Ligure “La ricerca psichiatrica in Italia: stato dell’arte e prospettive future”

**“Gli studi di esito: Progetto PICOS. Percorsi di cura dei pazienti all’esordio psicotico nei DSM veneti”**

Professor M. Tansella

29 January 2010. Bassano (Vicenza). Congresso della Società Italiana di Psichiatria, Sezione Veneta (PSIVE)

**“Presentazione”**

Dr. R. Siani

3 February 2010. San Bonifacio (Verona). Il cibo come piacere e non come necessità. Alla riscoperta dell’alimentazione equilibrate e del benessere psicofisico.

**“Anoressia, bulimia e obesità:diagnosi e terapie”**

Dr. Siani., Professor L. Burti

6 February 2010. Corso di perfezionamento in diagnosi e trattamento dei disturbi del comportamento alimentare: i casi difficili, Università di Padova

**“La presa in carico dei DCA in un servizio pubblico”**

Professor L. Burti, Dr. L. Berti

17 February 2010. Roma. In linea insieme: un sostegno al disagio psichico nel territorio, Comune di Roma

**“Le iniziative europee sulla salute mentale: l’attuazione del progetto HELPS”**

Professor C. Zimmermann

26 February 2010. Verona. Congresso “Innovative Interventions for Depression and Emotional Disorders in Patients with Physical Illnesses”

**“Empasse comunicative nella relazione terapeutica e possibili vie d’uscita”**

Dr. K. De Santi

26 February 2010. Verona. Congresso Internazionale “*Innovative intervention for Depression and Emotional Disorders in Patients with Physical Illnesses*”.

**“Il Progetto DECO-TRE: l’intervento stepped-care integrato per il trattamento della depressione in comorbilità con malattie fisiche nell’Ospedale Generale”**

Professor Michele Tansella

8 March 2010. Modena. II Edizione del Master in Promozione e Governo della Ricerca nelle Aziende Sanitarie

**“Promuovere la ricerca e la formazione necessaria a sostenerla”**

Dr. R. Siani

8 March 2010. Verona. *Ottomarto Femminile Plurale*, Comune di Verona

**“I disturbi del comportamento alimentare”**

Professor C. Barbui  
12 March 2010 Firenze 2010. Fondazione Basaglia.  
**“Ricerca clinica ed epidemiologia dei neurolettici”**

Dr. P. Brambilla  
12 March 2010. Roma. Neurological and Psychiatric Disorders: from neurobiology to medicine. Focus on schizophrenia.  
Società Italiana di Farmacologia (SIF)  
**“Imaging pharmacotherapy in schizophrenia and bipolar disorder”**

Professor L. Del Piccolo, Dr. S. Fontanesi, Dr. M.A. Mazzi, Dr. C. Goss, Dr. M. Rimondini, Dr. F. Moretti, Professor C. Zimmermann  
19 March 2010. Verona. Verona Network on Sequence Analysis VIII invitational workshop: The applications of the Verona Coding Definitions of Emotional Sequences (VR-CoDES) and future directions.  
**“Emotional cues and concerns in psychiatry: the way they arise and the way they are responded to by health providers”**

Dr. A. Cipriani  
16 April 2010. Gardone Riviera (BS). 10° Congresso Nazionale dell'Associazione Italiana di Psicogeriatrics  
**“Il problema dei BPSD”**.

Professor C. Barbui, Dr. A. Cipriani, Dr. M. Nosè  
19 April 2010. Verona  
**“Lithium And Standard Therapy in Resistant Depression (LAST-RD). Efficacia del litio nella depressione resistente con rischio suicidario”**

Professor C. Zimmermann  
26-27 April 2010. Verona. Corso di Perfezionamento Avanzato: Implementazione e Valutazione di Interventi Innovativi per i Pazienti all'Esordio Psicotico ed i loro Familiari nei Dipartimenti di Salute Mentale. Primo Modulo  
**“Costruire relazioni di collaborazione”**

Professor M. Ruggeri, Coordinatore Scientifico, Moderatore, Relazioni Introduttive e Conclusive  
26-27 April 2010; Verona, Corso di Perfezionamento Avanzato: Implementazione e Valutazione di Interventi Innovativi per i Pazienti all'Esordio Psicotico ed i loro Familiari nei Dipartimenti di Salute Mentale (Dir. Mirella Ruggeri). *Primo Modulo*:  
**“Working with families of people with psychosis”**

Professor M. Ruggeri, **Coordinatore** Scientifico, Moderatore, Relazione Introduttiva e Conclusiva  
27- 28 April 2010, Verona, Corso di Perfezionamento Avanzato: Implementazione e Valutazione di Interventi Innovativi per i Pazienti all'Esordio Psicotico ed i loro Familiari nei Dipartimenti di Salute Mentale (Dir. Mirella Ruggeri). Secondo Modulo:  
**“La conoscenza, la volontà e l'ottimismo: il Programma strategico GE UP per le persone all'esordio psicotico”**

Professor C. Barbui  
29 April 2010. Roma, Istituto Superiore di Sanità  
**“Revisioni sistematiche, meta-analisi e pooled-analisi: stima dell'efficacia dei trattamenti attraverso i confronti diretti tra gli interventi”**

Professor L. Burti, Dr. R. Siani  
7 May 2010. Verona. Seminario “Nuove frontiere per I DCA: tra innovazione e realtà”, Azienda Ospedaliera Universitaria Integrata di Verona, Unità di Psicoterapia  
**“Criteri per definire la presa in carico dei pazienti DCA e discussione dei casi clinici”**

Professor C. Zimmermann  
14 May 2010. Negrar (Verona). Per una vita come prima 2010. IV edizione,  
**“I bisogni informativi dei malati e la condivisione delle decisioni”**

Professor M. Ruggeri  
14 May 2010, Negrar, Verona Convegno “Per una vita come prima 2010. IV edizione”  
**“Recuperare un senso nella malattia: l'integrazione multidisciplinare in oncologia”**

Professor M. Ruggeri  
14 May 2010, Verona, Convegno “Evoluzione del concetto di cura in Oncologia”  
**“Intervento nella Tavola Rotonda”**

Dr. P. Brambilla

21 May 2010. Pavia. Seminari della Scuola Specialità in Psichiatria, Università di Pavia.

**“Corpus callosum and inter-hemispheric communication in bipolar disorder (and schizophrenia)”**

Dr. A. Lasalvia

25 May 2010, Modena. Incontro scientifico promosso dal DSM Azienda ULS Modena.

**“Riabilitazione Residenziale e Residenza”**

**“L’uso dei questionari di esito nella pratica clinica – L’esperienza del Progetto Outcome”**

Professor L. Burti

28-29 May. Verona. Disturbi dello Spettro Autistico: analisi e condivisione di modelli assistenziali ed abilitativi in Regione Veneto.

**“Autismo in età adulta”**

Dr. P. Brambilla

28-29 May 2010. Verona. Sindrome di Asperger: genialità senza empatia, Università di Verona. **“Neurosviluppo ed imitazione nello spettro autistico: studi di imaging”**

Dr. P. Brambilla

3 June 2010. Udine. Seminari Scuola Specialità in Psichiatria, Università di Udine.

**“Studio della connettività cerebrale nei disturbi psichiatrici”**

Professor M. Ruggeri, Coordinatore Scientifico, Moderatore, Relazione Introduttiva e Conclusiva

8 June 2010, Verona, Corso di Perfezionamento Avanzato: Implementazione e Valutazione di Interventi Innovativi per i Pazienti all’Esordio Psicotico ed i loro Familiari nei Dipartimenti di Salute Mentale (Dir. Mirella Ruggeri). *Terzo Modulo:*

**“Lavorare in equipe”**

Professor C. Zimmermann

8 June 2010. Verona. Corso di Perfezionamento Avanzato: Implementazione e Valutazione di Interventi Innovativi per i Pazienti all’Esordio Psicotico ed i loro Familiari nei Dipartimenti di Salute Mentale (Dir. Mirella Ruggeri). *Terzo Modulo:*

**“Costruire relazioni di collaborazione”**

Professor C. Barbui

10 June 2010. Merano

**“Uso razionale degli antipsicotici nei servizi di salute mentale”**

Dr. A. Cipriani

18 June 2010, Arezzo. Approccio integrato ai problemi della depressione (Corso per gli operatori dei Dipartimenti di Salute Mentale 2009-2010)

**“Ricerca clinica ed epidemiologia degli antidepressivi”**

Dr. A. Lasalvia

19 June 2010, Brescia. IV Brixia International Conference “Towards tailored therapies in psychiatry: relevance of biological psychopathological and environmental factors”

**“Tailoring individualised mental health care for patients treated in community mental health services: a negotiated need-based approach”**

Dr. R. Siani

25 June 2010. Padova. Innamoramento e altri affanni nei giovani: parliamone. Comune di Padova.

**“Non solo anoressia e bulimia: sfumature dei disturbi alimentari”**

Professor L. Burti, Dr. L. Berti

4 August 2010. Verona. Workshop “European Network for Promoting the Health of Residents in Psychiatric and Social Care Institutions” Azienda Ospedaliera Universitaria Integrata di Verona

**“HELPS Project: the Verona Centre”**

Dr. L. Berti

5 August 2010. Verona. Workshop European Network for Promoting the Health of Residents in Psychiatric and Social Care Institutions, Azienda Ospedaliera Universitaria Integrata di Verona

**“Il pacchetto HELPS per la promozione della salute”**

Professor L. Del Piccolo

5-8 September 2010. Verona. International Conference on Communication in Health Care, fourth EACH Conference, Symposium.

**“When patients cry...”.**

Professor M. Tansella

10 September 2010. Legnaro (Padova). Seminario SIP *“I Modelli Regionali nelle Politiche di Salute Mentale”*

**“Dal modello “a matrice” a quello delle tre E (Etica, Evidenze, Esperienze). Principi generali, applicazioni regionali per i DSM”**

Professor L. Burti

16 September 2010. L’Aquila. Recovery from catastrophes and beyond. From traumatic events to mental health rehabilitation. II National Conference of the Italian Society of Psychosocial Rehabilitation, University of L’Aquila, Coppito, Medical School and School of Psychology

Lectio magistralis **“Treatments, human rights, and citizenship”**

Dr. A. Cipriani

17 September 2010. Verona. Quinta Giornata Veronese di Informazione Indipendente sugli Psicofarmaci.

“Antipsicotici nella pratica clinica: istruzioni per l’uso”

**“Asenapine, iloperidone, olanzapina long-acting, paliperidone e ziprasidone: l’informazione negata”**

Dr. A. Lasalvia

17 September 2010, L’Aquila. II Conferenza Tematica Nazionale Società Italiana di Riabilitazione Psicosociale “Riprendersi dalle catastrofi ed oltre”

**“La sfida di implementare trattamenti evidence-based per le psicosi all’esordio nei servizi di salute mentale italiani”**

Dr. P. Brambilla

22-25 Septemebtr 2010. Cagliari. XVII Congresso Nazionale della Società Italiana di NeuroPsicofarmacologia (SINPF).

**“Neuroimaging nella terapia delle psicosi”**

Dr. R. Siani

23 September 2010 Trento. La promozione della salute orale in età evolutiva: strategie di intervento nella scuola primaria, Azienda Provinciale per I Servizi Sanitari Provincia Autonoma di Trento.

**“Metodologia della comunicazione in età evolutiva”**

Dr. P. Brambilla

1 October 2010. Udine. Neuroimmagini e Riabilitazione In età evolutiva IRCCS “E. Medea.

**“Studio della connettività cerebrale nelle sindromi psichiatriche in età evolutiva”**

Professor M. Ruggeri

7-October 2010 Colleferro, Roma Convegno: Assistenza Psichiatrica Territoriale e di Comunità

**“La valutazione e programmazione di interventi innovativi per pazienti con esordio psicotico”**

Professor L. Burti, Dr. L. Berti

8 October 2010. Marzana (Verona). La promozione di corretti stili di vita in ambito psichiatrico, Progetto Nazionale di Promozione dell’attività motoria, Ministero della Salute

**“L’attenzione alla comorbilità fisica nei pazienti psichiatrici come valore professionale dell’assistenza”**

**“Comorbilità fisica, stili di vita a rischio e promozione della salute in pazienti con psicosi funzionali nel Servizio Psichiatrico di Verona Sud”**

Professor M. Ruggeri

9-October 2010, Milano, XL Congress of the European Association for Behavioural & Cognitive Therapies

**“The GET UP Trial to test the effectiveness of CBT in Early Psychosis integrated in a multi-componential intervention in the clinical routine of Italian mental health services”**

Professor C. Barbui

9 October 2010. Milano, Congress of the European Association for Behavioural & Cognitive Therapies

**“Le linee-guida per il trattamento farmacologico degli esordi psicotici: un riferimento per migliorare la pratica clinica?”**

Dr. A. Cipriani

15 October 2010. Riccione, Lo psichiatra del nuovo millennio (Congresso SIP Giovani)

**“Come condurre gli studi clinici nella pratica clinica: l’esempio dello studio LAST-RD”**

Professor C. Barbui  
20 October 2010. Roma, Ospedale Sandro Pertini  
**“Farmaci antidepressivi e disturbi di personalità”**

Dr. C. Perlini, Dr. M. Bellani, Dr. G. Rambaldelli, Dr. V. Marinelli, Dr. M. Atzori, Dr. S. Cerruti, Dr. A. Ferro, Dr. L. Tomelleri, Dr. N. Dusi, Dr. A. Lasalvia, Professor M. Ruggeri, Dr. P. Brambilla P.

10 October 2010, Milano, 40th Annual Congress of the European Association for Behavioural & Cognitive Therapies (EABCT)

**“The Contrabass Project. Cognitive neuroendophenotypes for treatment and rehabilitation of psychoses: Brain imaging, inflammation and stress”**

Professor L. del Piccolo  
26 October 2010. Verona. IV Corso di perfezionamento Psicogerontologia e Psicogeriatria.  
**“Comunicazione verbale e nonverbale (CNV) con il paziente anziano”**

Professor L. Burti  
5 November 2010. Salerno. Prevenire la cronicità. V giornata di studio, Società Italiana di Riabilitazione Psichiatrica (SIRP)  
**“If... psychiatric hospitals had remained”**

Dr. R. Pertile  
6-9 November 2010. Firenze. XXXIV Congresso dell'Associazione Italiana di Epidemiologia - EUROEPI 2010  
**A weighted socio-economic status index in mental health: local or National weights?.**

Dr. P. Brambilla  
18-20 November 2010. Milano. Terzo congresso internazionale Inter - School Forum on Child Analysis (ISFCA) & Centro Italiano di Psicologia Analitica C.I.P.A.  
**“Anatomia e neurosviluppo nell'autismo. Le evidenze provenienti dagli studi con risonanza magnetica nucleare”**

Dr. A. Cipriani  
25 November 2010, Peschiera del Garda, Convegno “Sonno e malattie neurodegenerative  
**“Terapia dei disturbi del sonno nel paziente con malattia neurodegenerativa e comorbidità depressiva”**

Dr. V. Donisi  
26 November 2010. Verona, Convegno “Disuguaglianze e Salute Mentale”.  
**“Lo studio multicentrico nazionale: “Status socio-economico, Urbanizzazione e Salute Mentale”.**

Professor M. Ruggeri, Moderatore, Relazione Introduttiva e Conclusiva  
13-14 December, Verona. Corso di Perfezionamento Avanzato: Implementazione e Valutazione di Interventi Innovativi per i Pazienti all'Esordio Psicotico ed i loro Familiari nei Dipartimenti di Salute Mentale (Dir. Mirella Ruggeri). *Quarto Modulo:*  
**“Advanced Procedures for the Cognitive-Behavioural Treatment of patients at the psychosis onset”**



## Journal Club. Critical review of recent international literature

<i>Date</i>	<i>Title</i>	<i>Presenter</i>
0 3/05/2010	Static and dynamic cognitive deficits in childhood preceding adult schizophrenia: a 30-year study	Dr. Luisa Tomelleri
17/05/2010	Neurocognitive functioning as intermediary phenotype and predictor of psychosocial functioning across the psychosis continuum: studies in schizophrenia and bipolar disorder	Dr. Silvia Scala
21/06/2010	A naturalistic multicenter trial of a 12-week weight management program for overweight and obese patients with schizophrenia or schizoaffective disorder	Dr. Loretta Berti
05/07/2010	Anterior hippocampal and orbitofrontal cortical structural brain abnormalities in association with cognitive deficits in schizophrenia	Dr. Stefania Cerruti
06/09/2010	Bifrontal, bitemporal and right unilateral electrode placement in ECT: randomised trial	Dr. Batul Hanife
04/10/10	Prediction of psychosis in adolescent and young adults at high risk. Results from the prospective european prediction of psychosis study	Dr. Maddalena Ciano
18/10/10	Effects of antipsychotic medication alone vs. combined with psychosocial intervention on outcomes of early-stage schizophrenia a randomized, 1-year study	Dr. Elisa Zampieri
08/11/10	Antipsychotic drugs and risk of venous thromboembolism: nested case-control study	Dr. Arianna Castellani
22/11/10	Mental disorders, comorbidity and suicidal behaviour: Results from the National Comorbidity Survey Replication	Dr. Antonio Maida

## Lectures and Seminars given abroad

Dr. P. Brambilla

January 14, 2010. Houston, USA. Research Seminar, University of Texas at Houston, Department of Psychiatry and Behavioural Neurosciences.

**“The role of white matter for the pathophysiology of bipolar disorder”**

Dr. C. Goss, Dr. M.A. Mazzi, Dr. S. Fontanesi, Dr. F. Moretti, Professor L. Del Piccolo, Dr. M. Rimondini, Professor C. Zimmermann

January 22-23, 2010. Hamburg. 1<sup>st</sup> International Conference on Patient education in MS and RIMS

**“Assessment of patient-physician relationship. The use of the OPTION scale in different settings”**

Dr. M. Bellani

January 28, 2010. Vienna. Department of Psychiatry and Psychotherapy at the Medical University of Vienna

**Guest lecture: “Limbic and cortical pathology in affective disorders”.**

Dr. M. Bellani

February 2, 2010. Zurich, Switzerland. Swiss Federal Institute for Technology (ETH), Similarity-based Pattern Analysis & Recognition. Simbad Project. Workshop for applications of UNIVR and ETH.

**“ROI analyses in schizophrenia: discussion with medical partners”.**

Dr. P. Brambilla

February 27- March 2, 2010. Munich, Germany. 18th AEP Congress

**“Associative learning and context processing abilities in bipolar disorders”**

Professor L. Burti, Dr. L. Berti

March 24, 2010. Aalborg, Denmark. 5th HELPS Meeting, “European Network for Promoting Health of Residents in Psychiatric and Social Care Facilities”

**“Presentation and introduction to IP “Physico Intervention Programme”**

Professor M. Tansella

May 13, 2010. Madrid. International Strategies in Mental Health. WHO Meeting

**“International strategies in mental health”**

Professor C. Barbui

June 16-19, 2010. Bergen, Norway. 15<sup>th</sup> European Psychiatric Association Epidemiology and Social Psychiatry

**“The role of evidence, values, preferences and feasibility issues in developing recommendations using the GRADE approach”**

Professor M. Tansella

July 12, 2010. Lisbon. Meeting of the World Psychiatric Association Section “Public Health Policy and Psychiatry”

**“Public mental health and mental health reform”**

Dr. A. Cipriani

July 28, 2010, Harrogate. BAP Summer Meeting 2010

**“How important is placebo in antidepressant trials?”**

Dr. V. Donisi

October 23-27, 2010. Marrakech, World Congress of Social Psychiatry "Promoting integration of health and mental health".

**“Socio-economic status and utilization of community-based psychiatric services”**

Dr. A. Cipriani

November 17-19, 2010. Vienna. 10<sup>th</sup> International Forum on Mood and Anxiety Disorders

**“Comparative efficacy of antidepressants: implications for practice”**

**“Multiple-treatments meta-analysis of antidepressants for major depression: strengths and weaknesses”**

Professor L. Burti

November 24-29, 2010. Bolu, Turchia. 3 Toplum Ruh Sagligi Gunlei “Toplum Temelli Ruh Sagligi Modeli ve Uygulamalari”

**Oral presentation**

## Research Grants

The following projects have been funded during the year 2008-2010:

DESCRIPTION	Funding Institution	Scientific Coordinator	Total/Grant
“European networks for the promotion of the healthy living conditions in psychiatric care institutions” (HELPS)	Public Health Executive Agency (PHEA), London	Professor L. Burti	52.000,00 €
“GET UP (Genetics, Endophenotypes and Treatment: Understanding early Psychosis)”	Ministry of Health, Rome	Professor M. Ruggeri	760.000,00 €
“Systematic review of meta-analyses on the efficacy of SSRI and SNRI in the treatment of Major Depression”	German Medicine Health Authority	Professor C. Barbui	20.000,00 €
“Anti Stigma Programme: European Network (ASPEN)”	European Commission, Directorate General for Health and Consumer Affaire, Public Health Executive Agency	Professor L. Burti	76.309,00 €
“Institutional Treatment, Human Rights and Care Assessment” (BURTITHACA)	Public Health Executive Agency (PHEA), London	Professor L. Burti	80.798,27 €
“Randomized evaluation of the effectiveness of lithium in addition to standard treatment in individuals with depression and suicide risk. An independent, pragmatic, multicentre, parallel-group, superiority trial (Studio CHAT)”	AIFA, Rome	Professor C. Barbui	470.000,00 €
"I percorsi di cura dei pazienti inseriti nelle strutture residenziali psichiatriche. Analisi dei bisogni e dei costi."	MIUR ex 60%	Professor F. Amaddeo	5.596,00 €
	MIUR ex 60%	Dr. C. Barbui	7.471,00 €
“Efficacy and acceptability of escitalopram compared with other antidepressants: a systematic review and meta-analysis”	MIUR ex 60%	Dr. A. Cipriani	8.922,00 €
“The clinical correlates of Neurological Soft Signs in a representative sample of first episode psychosis patients”	MIUR ex 60%	Professor M. Ruggeri	7.016,00 €
	MIUR ex 60%	Professor C. Zimmermann	6.367,00 €
	MIUR ex 60%	Professor M. Tansella	7.316,00 €
	MIUR ex 60%	Professor L. Burti	3.809,00 €
Update of World Health Organization (WHO) the list of Essential Medicines for mental disorders	WHO, Geneva	Dr. C. Barbui	
Establishing a regional genetic and clinical register of eating disorders (5 centres)	Bio.Ve.D.A.	Professor L. Burti	40.000 € (sulla quota totale di 200.000 €)

**The following Institutions and Funding Bodies have provided financial support and Grants to Research projects of our Centre during the previous years:**

<b>DESCRIPTION</b>	<b>Funding Institution</b>	<b>Scientific Coordinator</b>	<b>Total/Grant</b>
Implementing Mental Health Promotion Action (TANSIMHPA)	European Union	Professor M. Ruggeri / Dr. M. Stegagno	10.382,00 €
Donation (TANSPFIZER)	Pfizer Italia SRL	Professor M. Tansella	75.000,00 €
Mental Health Economics-European Network (AMADDLSE)	European Community (LSE), London	Professor F. Amaddeo	11.181,50 €
“Promuovere la ricerca scientifica per migliorare la qualità delle cure. Il Centro OMS di Ricerca sulla Salute Mentale, Verona” (TANSFOND06) (Three year research program)	Fondazione CariVerona	Professor M. Tansella	600.000,00 €
“Identification and treatment of depression in comorbidity with physical illness” (RUGMSALU)	Ministry of Health, Rome	Professor M. Ruggeri	150.000,00 €
“Toward a new definition of schizophrenia: the biological basis of a core phenotype” (RUGJOINT07)	Glaxo SmithKline Spa and University of Verona	Professor M. Ruggeri	90.000,00 €
“Total body Imaging Anatomy”	University of Verona, Start Cup Veneto	Dr. P. Brambilla	44.770,00 €
“Economic evaluation of psychiatric care in Ukraina, Moldova and Georgia”	WHO-Regional Office for Europe, Copenhagen	Professor F. Amaddeo	11.680,44 €
“Genotype, endophenotype and phenotype: identifying etiopathogenetic factors of psychoses for the development of preventive models and individualised therapeutic strategies”	Veneto Region, Azienda Ospedaliera di Verona	Dr. A. Lasalvia	70.000,00 €
“Geographical distance, socio-economic status (SES) and utilization of community-based mental health services”	MIUR ex 60%	Professor M. Tansella	7.248,00 €
“Socio-economic Status, urbanicity and mental health”	Italian Ministry of Health	Professor F. Amaddeo	153.000,00 €
Donation for PICOS project	AITSAM	Professor M. Ruggeri	2.000,00 €
“The development of the Italian version of the Diagnostic Interview for Psychosis”	MIUR ex 60%	Professor F. Amaddeo	5.205,00 €
“Selective serotonin-reuptake inhibitors versus other types of pharmacotherapy for depression: systematic reviews and meta-analyses of randomised controlled trials”	MIUR ex 60%	Professor C. Barbui	12.494,00 €

“Comparative efficacy and acceptability of 12 new generation antidepressants: a mixed-treatment comparison meta-analysis”	MIUR ex 60%	Dr. A. Cipriani	9.391,00 €
“Relationship between COMT and affective symptoms in schizophrenia: a 6-year follow-up study”	MIUR ex 60%	Professor M. Ruggeri	6.795,00 €
Citizens’ preferences concerning communication issues in medicine. A multicentre study	MIUR ex 60%	Professor C. Zimmermann	5.665,00 €
Update of World Health Organization (WHO) the list of Essential Medicines for mental disorders	WHO, Geneva	Professor C. Barbui	

## Main on-going research projects 2010-2011

### Research Unit: Psychiatric Register, Economics and Geograpy of Mental Health

Head: Professor Francesco Amaddeo, MD, PhD

Research on Financing systems' Effect on the Quality of Mental Health Care – REFINEMENT, funded by the EU-FP7 (F. Amaddeo, L. Grigoletti, V. Donisi, I. Montagni, D. Salazzari & F. Tedeschi)

Mortality and avoidable mortality among psychiatric patients. A 20-year case register study (G. Perini, A. Biggeri, L. Grigoletti, A. Rossi, C. Barbui, M. Tansella & F. Amaddeo)

Mortality for cancer in Verona in psychiatric patients and in the general population (M. Tansella, F. Amaddeo, C. Barbui, G. Perini, L. Grigoletti, M. Nosè & A. Rossi)

Geographical distance, socio-economic status (SES) and utilization of community-based mental health services (L. Grigoletti, J. Jones, G. Zulian, R. Pertile, V. Donisi, M. Ballarin, M. Tansella & F. Amaddeo)

Economic evaluation of psychiatric care in Ukraina, Moldova and Georgia (F. Amaddeo)

Atlas of Mental Health Care in the Verona Health District (G. Zulian, F. Amaddeo, L. Grigoletti)

Urbanicity and psychiatric care (G. Zulian, V. Donisi, L. Grigoletti, R. Pertile, A. Rossi, E. Rigon, M. Tansella & F. Amaddeo)

Mobility of psychiatric patients in community-based mental health centres (G. Zulian, V. Donisi, R. Pertile, L. Grigoletti, L. Rabbi & F. Amaddeo)

Continuity of care and outcome in a community-based system of mental health care (A. Rossi, V. Vailati Venturi & F. Amaddeo)

The evaluation of a new funding system for mental health departments: results from a multi-centre Italian study (*I-psycost*) (L. Grigoletti, A. Grassi, M. Boldrini, M. Chiappelli, M. Percudani, F. Catapano, A. Fiorillo, L. Bartoli, M. Bacigalupi, P. Albanese, S. Simonetti, F. Perali, P. De Agostini, M. Tansella & F. Amaddeo)

### Research Unit: Clinical Psychopharmacology & Drug Epidemiology

Head: Professor Corrado Barbui, MD

Monitoring the use of psychotropic drugs in clinical practice: analysis of a psychotropic drug register (M. Nosè, E. Esposito, M. Bianchini, P. Petrosecolo & C. Barbui)

Selective serotonin-reuptake inhibitors versus other types of pharmacotherapy for depression: systematic reviews and meta-analyses of randomised controlled trials. (A. Cipriani, M. Dieterich & C. Barbui)

Comparative efficacy and acceptability of 12 new generation antidepressants: a mixed-treatment comparison meta-analysis. (A. Cipriani, T. A. Furukawa, G. Salanti, J.R. Geddes, R. Churchill, J. Higgins, H. McGuire, N. Watanabe, A. Nakagawa, I.M. Omori & C. Barbui)

Clozapine, Haloperidol, Aripiprazole Trial (CHAT): Randomized evaluation of the effectiveness of clozapine and aripiprazole versus clozapine and haloperidol in the treatment of schizophrenia. An independent, pragmatic, multicentre, parallel-group, superiority trial. (C. Barbui, A. Cipriani, M. Nosè, A. Veronese, E. Esposito, P. Petrosecolo, S. Accordini & M. Tansella)

Randomized evaluation of the effectiveness of lithium in subjects with treatment-resistant depression and suicide risk. An independent, pragmatic, multicentre, parallel-group, superiority trial. (C. Barbui, A. Cipriani, M. Nosè, M. Purgato, F. Girlanda, E. Esposito, G. Bisoffi & M. Tansella)

“Pharmacological treatment of mental disorders in primary health care”. Development of a booklet to assist WHO in increasing the rational use of psychotropic drugs in low and middle income countries

(C. Barbui, & A. Cipriani)

Subjective tolerability of antipsychotic drugs: an epidemiological perspective using the Liverpool University Neuroleptic Side-Effects Rating Scale

(M. Nosè, E. Esposito, M Bianchini, P. Petroseolo & C. Barbui)

Development of an essential health package to assist WHO to scale up care for mental, neurological and substance use disorders (mhGAP Intervention Package)

(C. Barbui)

## **Research Unit: Brain Imaging & Neuropsychology**

Head: Dr. Paolo Brambilla, MD, PhD

Following Imaging and Resilience features in Schizophrenia and affective disorders (FIRST)

(M. Bellani, C. Perlino, L. Tomelleri, R. Cerini, R. Pozzi-Mucelli, A. Ferro, S. Cerruti, V. Marinelli, G. Rambaldelli, M. Tansella & P. Brambilla)

Prevention on Psychotic and Affective Events (PREVENT)

(M. Bellani, L. Tomelleri, C. Perlino, A. Ferro, M. Atzori, A. Beltramello, M. Tansella & P. Brambilla)

The neurobiological underpinnings of social psychiatry

(N. Dusi, G. Rambaldelli, C. Perlino, R. Cerini, R. Pozzi-Mucelli, M. Tansella & P. Brambilla)

Perfusion imaging studies in human brain

(G. Rambaldelli, D. Peruzzo, M. Atzori, A. Bertoldo, F. Zanderigo, M. Tansella, C. Cobelli & P. Brambilla)

Similarity based classification (SIMBAD)

(U. Castellani, D. Cheng, S. Cerruti, M. Bellani, G. Rambaldelli, M. Tansella, P. Brambilla, & V. Murino)

Vulnerability index in psychoses (VIPS): investigation of executive functions

(L. Tomelleri, S. Cerruti, V. Marinelli, D. Giusto, S. Frangou, M. Tansella & P. Brambilla)

Speech and language disturbances in schizophrenia

(C. Perlino, F. Fabbro, A. Marini, M. Tansella & P. Brambilla)

Investigation of brain connectivity in twins

(M. Bellani, C. Fagnani, S. Cerruti, C. D'Ippolito, G. Rambaldelli, S. Alviti, C. Perlino, M. Tansella, M. Balestrieri, S. Stazi, P. Brambilla)

Neurodevelopmental markers of Autism

(L. Zocante, A. Ferro, G. Rambaldelli, M. Bellani, C. Perlino, M. Tansella, B. Dalla Bernardina, P. Brambilla)

## **Research Unit: Integrating physical health, mental health and human rights**

Head: Professor Lorenzo Burti, MD

Ithaca. Institutional treatment, human rights and care assessment

(L. Burti, C. Papa, S. Bernardelli, E. Berti, A. Lasalvia, G. Thornicroft & M. Tansella)

Helps. European network for promoting health of residents in psychiatric and social care institutions

(L. Burti, L. Berti, G. Imperadore, R. Kilian & Th. Becker)

Physico: Physical co-morbidity, poor health behaviour and health promotion

(L. Berti, G. Imperadore, M. Mazzi & L. Burti)

Self-Help II: The Verona self-help group: Patterns of members' participation and ability of the program to meet their expectations

(L. Berti, C. Bonetto, D. Cristofalo, E. Guerriero, P. Vanzini & L. Burti)

Bio.Ve.D.A.: Establishing a regional genetic and clinical register of eating disorders

(R. Siani, E. Bison, D. Di Pauli, C. Guarnier, L. Ravazzin, S. Tosato, S. Viccaro, P. Santonastaso & L. Burti)



## **Research Unit: Environmental, Clinical and Genetic Determinants of Outcome of Mental Disorders**

Head: Professor Mirella Ruggeri, MD, PhD

GET UP (Genetics, Endophenotypes and Treatment: Understanding early Psychosis)

(M. Ruggeri, A. Lasalvia, S. Tosato, P. Brambilla, M. Bertani, C. Bonetto, S. Bissoli, D. Cristofalo, C. Perlini, K. De Santi & M. Tansella)

SGENE: A Large Scale Genome-Wide Association Study of Schizophrenia addressing variation in expressivity and contribution from environmental factors

(S. Tosato, C. Bonetto & M. Ruggeri)

Toward a new definition of schizophrenia: the biological basis of a core phenotype – Joint Project Glaxo/University of Verona

(S. Tosato, C. Bonetto, M. Bertani, M. Zanoni & M. Ruggeri)

Identification and treatment of depression in comorbidity with physical illness: the DECO-TRE Project.

(M. Ruggeri, K. De Santi, D. Cappellari, A. Cipriani & C. Barbui)

PICOS- Psychosis Incident Cohort Outcome Study. A multisite collaborative project on the clinical, social and biological factors predicting outcome in the new cases of psychoses in the Veneto Region, Italy

(M. Ruggeri, A. Lasalvia, S. Tosato, P. Brambilla, M. Bertani, C. Bonetto, S. Bissoli, D. Cristofalo, E. Ira, M. Zanoni, G. Marrella, K. De Santi, G. Zanatta, L. Lazzarotto, M. Tansella & Gruppo PICOS)

Genotype, endophenotype and phenotype: identifying etiopathogenetic factors of psychoses for the development of preventive models and individualised therapeutic strategies

(M. Ruggeri, S. Tosato, A. Lasalvia, C. Bonetto, D. Collier, M. Di Forti, R. Murray & M. Tansella)

Schizotaxia: epidemiology and clinical and neuropsychological validation

(A. Lasalvia, M. Ruggeri, S. Scala, M. Tansella, C. Bonetto, D. Berardi, D. Cristofalo, G.F. Placidi & S. Scarone)

Implementing mental health promotion action (IMHPA Study)

(M. Ruggeri & M. Bertani)

Assessing self-perceived discrimination and stigma following the first episode of psychosis by using the DISC-11 Scale

(A. Lasalvia, S. Zoppei, G. Thornicroft, M. Bertani, S. Bissoli, D. Cristofalo, L. Lazzarotto & M. Ruggeri)

Relationship between the presence of candidate gene (Dysbindin, Neuregulin 1, BDNF) for schizophrenia and illness onset and severity: a 6-year follow-up study

(M. Ruggeri, S. Tosato, C. Bonetto, M. Zanoni, A. Lasalvia, D. Collier, M. Di Forti, R. Murray & M. Tansella)

International Study of Discrimination and Stigma Outcomes (INDIGO Multisite Study)

(L. Burti, A. Lasalvia & M. Tansella)

Implementing NICE Guidelines of schizophrenia in routine clinical practice: a multisite project in Italian mental health services

(L. Burti, A. Lasalvia, S. Bissoli, D. Semisa & M. Ruggeri)

Comparison of drug abuse among patients at their first episode of psychosis in Italy and the UK

(S. Tosato, A. Lasalvia, R. Murray & M. Ruggeri)

Extended endophenotypes in early psychosis.

(E. Ira, M. Zanoni, C. Bonetto, M. Ruggeri & S. Tosato)

Comparison of gender differences among patients at their first episode of psychosis in Italy and the UK

(M. Bertani, A. Lasalvia, R. Murray & M. Ruggeri)

Outcome evaluation of sheltered hostels for mentally disabled people in 17 Italian Regions.

(M. Ruggeri, A. Lasalvia, S. Bissoli, R. Radici, S. Zizolfi & G. Fioretti)

Physical health and lifestyle in patients at their psychosis onset. A multicentric European Study

(A. Lasalvia, P. Santo, S. Tosato & M. Ruggeri)

Anti Stigma Programme: European Network (ASPEN)  
(A. Lasalvia, C. Bonetto, L. Burti, D. Cristofalo & S. Zoppi)

## **Research Unit: Clinical Psychology & Communication in Medicine**

Head: Professor Christa Zimmermann, Dr. Psychol., PhD.

Information giving in psychiatric and general hospital patients  
(C. Goss, L. Del Piccolo, M.A. Mazzi, S. Fontanesi, F. Moretti, M. Rimondini & Ch. Zimmermann)

The involvement of psychiatric patients in the decision making process  
(Ch. Zimmermann, L. Del Piccolo, C. Goss, T. Pozzan, M.A. Mazzi & M. Rimondini)

The evaluation of communication skills training in psychiatry.  
(M. Rimondini, L. Del Piccolo, C. Goss, M.A. Mazzi & Ch. Zimmermann)

Validation of the consensus definitions of patient cues/ concerns and related physician behaviour during medical consultations.  
(L. Del Piccolo, C. Goss, M.A. Mazzi, F. Moretti, M. Rimondini & Ch. Zimmermann)

Citizens' view and preferences concerning communication issues in medicine . A multicentre study  
(F. Moretti, Jozien Bensing, Ian Fletcher, M. Rimondini, M.A. Mazzi, L. Del Piccolo, C. Goss, G. Deledda & Ch. Zimmermann)

The informative needs of breast cancer patients and their involvement in treatment decisions  
(C. Goss, C. Zimmermann, G. Deledda, M.A. Mazzi)