



University of Verona
 Department of Medicine and Public Health
 Section of Psychiatry and Clinical Psychology

**WHO Collaborating Centre
 for Research, Service Evaluation and Training in Mental Health**

Head: Professor Michele Tansella

**Scientific Report 2008
 (Revised, with 2008 IF scores)**



www.psychiatry.univr.it

The WHO Collaborating Centre in Verona is located in a recently refurbished building, within the University General Hospital of Verona (Policlinico G.B. Rossi, Piazzale L.A. Scuro 10, 37134 Verona, Italy). It was designated by WHO as *Collaborating Centre for Research, Service Evaluation and Training in Mental Health* on 23 February 1987. According to WHO regulations the designation lasts for four years and may be continued, with periodic reviews by WHO of the scientific performance of the Centre. The designation was confirmed in 1992. In September 1996 the Centre was re-designated as a **WHO Collaborating Centre for Research, Service Evaluation and Training in Mental Health** and since then this designation was further confirmed in 2001, 2005 and 2009.

The main research activities, carried out by the six Research Units of the Centre, focus on epidemiological and social psychiatry (including economics and geography of mental health studies), genetics and neuroimaging of schizophrenic and bipolar disorders, clinical psychopharmacology, communication in medicine and evaluation of mental health services. The staff (more than 50 persons) includes psychiatrists, clinical psychologists, computer scientists, physicists, geographers and social scientists, statisticians, technicians and secretaries.

Total Impact Factor (IF) of Papers Published by Members of the WHO Centre of Verona

2004:	IF 83.134	2007:	IF 224.870 (2007 IF scores)
2005:	IF 116.637	2008:	IF 144.833 (2008 IF scores)
2006:	IF 76.469	In press:	IF 226.177 " "

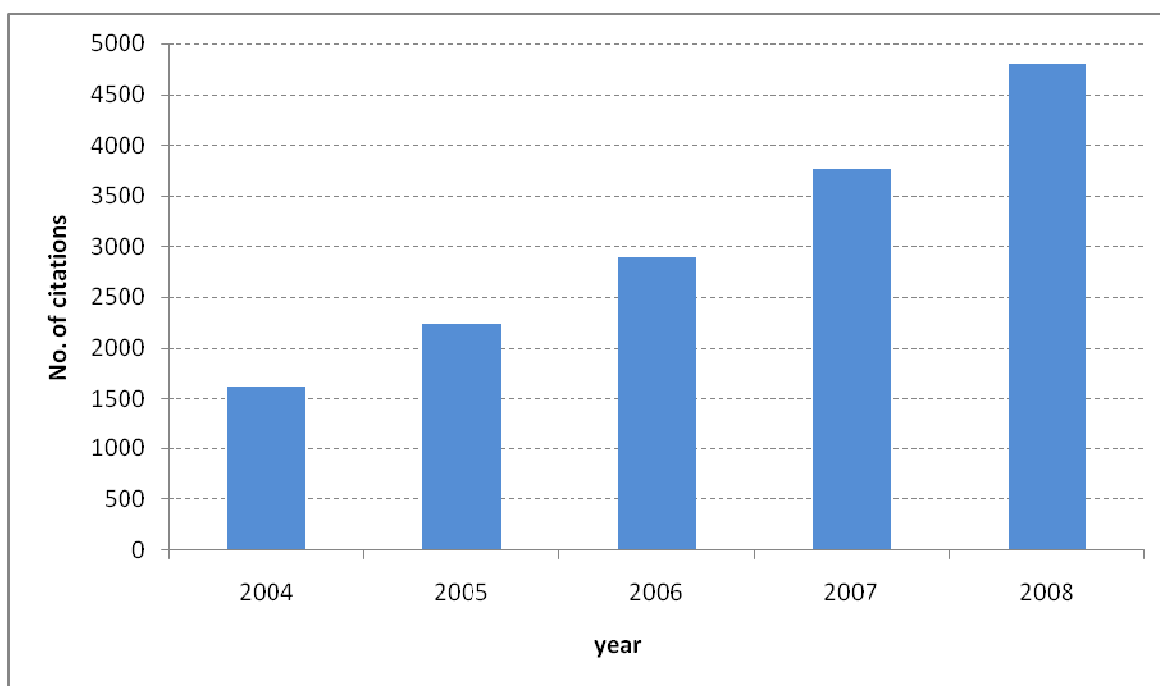
**Indices of Scientific Performance (2004-2008)
 of the Heads of the Units of the WHO Centre of Verona**

Prof. F. Amaddeo, Dr. C. Barbui, Dr. P. Brambilla, Prof. L. Burti, Prof. M. Ruggeri, Prof. M. Tansella
 and Prof. C. Zimmermann

Indices calculated by Dr. R. Pertile, Statistician

• No. of papers published in 2004-2008 (indexed within Web of Science)	283
• No. of citations of these papers (Web of Science)	1386
• Mean No. of citations per paper (range)	4.9 (0-55)
• Combined <i>Hirsch Index</i> for the Heads of Units of the WHO Centre of Verona (based on unduplicated citations of papers published in 2004-2008)	22

No. of citations of all papers published in 1990-2008 by the Heads of Units of the Verona WHO Centre.



The WHO Collaborating Centre in Verona is part of the **Section of Psychiatry and Clinical Psychology, Department of Medicine and Public Health, University of Verona**, that provides Research, Clinical Activity and Education and Training.

Clinical Activity

Clinical activity takes place in the Academic General Hospital of Verona (*University Department of Psychiatry and Psychiatric University Clinic*), in the *South-Verona Mental Health Centre* (a multi-purpose facility providing outpatient consultations, day care, crisis intervention and home visits), in the *staffed residential facilities and apartments for long-term patients*, in the *Outpatient Department*, and in other community-based facilities, which constitute an integrated Service: **the South-Verona Community Psychiatric Service (CPS)** (Head: Professor Michele Tansella). Our clinical facilities include also the *University Department of Psychosomatics and Clinical Psychology* (Head: Professor Mirella Ruggeri), with the *Unit of Clinical Psychology and Communication in Medicine* (Professor Christa Zimmermann), that provide outpatient care for patients with panic attacks and obsessive-compulsive disorders, as well as consultations for patients and doctors of other departments of the Academic General Hospital (800 beds), the *Unit of Psychotherapy* (Professor Lorenzo Burti), that provides individual and family psychotherapy and the *Unit for Eating Disorders* (Dr. Roberta Siani).

The South-Verona CPS was established in 1978, according to the provision of the Italian Psychiatric Reform, and is responsible for providing comprehensive psychiatric care (prevention, therapy and rehabilitation) for all those living in South-Verona, an area of 100,000 inhabitants.

The South-Verona Community Psychiatric Service (CPS)

General organization

The **South-Verona Community Psychiatric Service (CPS)** was designed as a unitary service, in which great emphasis is given to communication between staff and to integration between the various clinical activities. It is first described here in general terms. The various facilities and services available to South-Verona residents are then detailed. Staff members are divided into three multidisciplinary teams, each serving a sub-sector of the South-Verona catchment area. The three teams are organised according to a "single staff module": with the exception of nurses, all staff (psychiatrists, psychologists, social workers) work both inside and outside the hospital setting and retain responsibility for the same patients across different components of the service and through all phases of treatment. There are hospital nurses (who provide 24 hour cover over three shifts in the general hospital ward), hostel nurses, Mental Health Centre nurses and community nurses (who provide cover over two shifts, from 8 a.m. to 8 p.m., and are on call, two at a time, during the weekends and overnight). Of the nursing staff, only the community nurses are assigned to one of the three teams.

This module was designed to ensure continuity of care, both longitudinal continuity (through the different phases of treatment) and cross-sectional continuity (through the different components of the service). Within each team, each patient is assigned to one particular member of the staff (the "case manager"). Case managers may be doctors,

psychologists or senior nurses. Patients seen only at the out-patient department, by a psychiatrist or a psychologist, do not have a case manager.

The South-Verona CPS is well integrated, allowing patients easy access to most components and easy transfer from one component to another, according to need. A "drop in" approach is encouraged at the Mental Health Centre and patients can seek care from specialist services directly, without referral from GPs. However most patients are referred by GPs and referred back to them by the CPS, when it is felt that less stigmatising care can be provided through primary care. There are good relations between primary and secondary care and regular meetings are held with GPs to discuss how to improve the primary care / mental health service interface

Components of the CPS

The **Community Psychiatric Centre** is the linchpin of the CPS and is where staff meetings take place and interventions are planned and initiated. The Centre, located in an old, recently refurbished three-storey building with a garden, not far away from the University general hospital, is open on weekdays, from 8 a.m. to 8 p.m. and on Saturdays from 8 a.m. to 5 p.m. Therapeutic programmes include crisis intervention, day care for acute and chronic patients and social skills groups. The Centre also serves as an informal meeting place for Service "users", and it is conceived as a flexible resource whose organisation can be modified from time to time to meet the users' changing needs.

The psychiatric ward (University Psychiatric Clinic) is an open ward of 16 beds located in the University general hospital which has in total about 800 beds. It is a traditional hospital ward, similar to all other medical wards in the hospital and its door is locked when there are patients who have been compulsory admitted.

The outpatient department provides psychiatric consultations and individual and family therapy. Offices are located in the general hospital and in the Mental Health Centre.

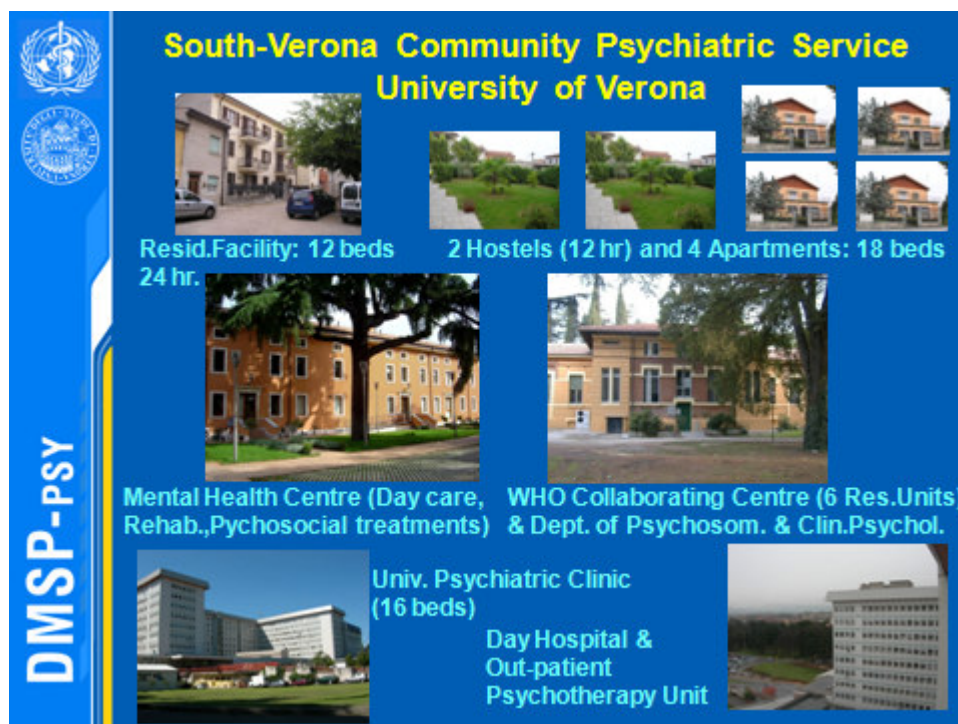
The consultation liaison service for other medical and surgical departments (run by the Department of Psychosomatics and Clinical Psychology) maintains psychiatric integration with other hospital-based medical activities and ensures continuing contact with our patients when hospitalised for medical reasons.

The emergency service. There is a psychiatric emergency service at the general hospital, open 24 hours a day, seven days a week. It is run by a psychiatrist from our team, who is on call. To ensure therapeutic continuity, he/she is usually assisted during working hours by the treatment team members who are (or will be) in charge of the patient requiring the urgent intervention.

There is also an **emergency night and week-end service**, co-ordinated by a psychiatrist and run by two psychiatric nurses from our team, who are on call to provide care in the supported flats and hostel, as well as at patients' homes.

Home visits can be made to provide crisis intervention in response to emergency calls, but for chronic patients these are usually planned in advance and offer regular, long-term support and care to patients and their families with the goal of minimising relapses and hospital admissions. Home visits are highly regarded by the service and are well accepted by patients and families.

Two group homes and four apartments (with a total number of 18 beds), offering different levels of supervision, and **one hostel** (with 12 beds, supervised 24 hours a day by support workers and counsellors and occasionally visited by nurses), are also available.



Distinctive features of South-Verona CPS

The features of the South-Verona mental health service that could be considered "distinctive" to the service are as follows:

- a. It is not experimental; the South-Verona initiative is a long-term undertaking, implemented by legislation in 1978 and based on a National Act flexible enough to permit development of a system of care which is suited to local needs;
- b. It was designed and is still functioning to substitute, not to supplement, the old hospital-based system of care. The front doors of the mental hospital have been closed to new admissions since May 1978 and to all admissions since January 1982;
- c. The clinical model developed in South-Verona is "systemic" and with a "single-staff module": all staff apart from nurses work both in the hospital and in the community and remain responsible for the care of the same patients across different components of the service and through the different phases of care. The "single staff" module is designed to ensure continuity of care and to encourage commitment and the assumption of full responsibility by the service.
- d. The South-Verona CPS is well integrated, and allows easy and informal access to patients. It is a public service run by the National Health Service. Payment is not required, except for a fee for out-patient visits (this applies only to more affluent patients and for those who are not considered long-term).
- e. Every effort is made to meet user's needs with individual care plans. A well established clinical practice in South-Verona is the critical examination of the user's explicit requests, in order to recognise what his/her real needs are. Included in this process is the need to question who originated the request for intervention (the real, often disguised or secret client), besides the usual assessment of psychosocial, precipitating and intervening factors.
- f. Although not designed as an experiment, the South-Verona initiative was from the beginning associated with a series of long-term research projects for monitoring and evaluating the changes in service organisation. Many projects use an epidemiological approach and include, evaluations of needs, costs and outcomes.

Education & Training

Education and training is provided for undergraduate medical students, for post-graduate residents at the *Scuola di Specializzazione in Psichiatria* of the University of Verona (advanced courses in Clinical Psychiatry, Social Psychiatry, Clinical Psychology, Psychotherapy and Clinical Psychopharmacology), for post-graduate Ph.D. students in Psychology and Psychiatry (*Dottorato di Ricerca in Scienze Psicologiche e Psichiatriche*), and for undergraduate students in psychosocial rehabilitation (*Corso di Laurea in Tecnica della Riabilitazione Psichiatrica*). Short courses in Psychiatry, Medical and Clinical Psychology, Psychosomatics, and Psychogeriatrics are also provided for other Schools of Specialisation within the Medical School of the University of Verona.

The South-Verona CPS provides undergraduate and postgraduate students with the opportunity to obtain up-to-date education, and to receive their training in settings identical to those that they will find in their professional life, under the supervision of experienced personnel.

Table of contents

- **List of peer reviewed Journals that published in 2008 papers by members of our Centre and Impact Factor (2008)** **pag. 6**
- **Papers & Books published in 2008** **pag. 7**
- **List of peer reviewed Journals that published in 2009 or have in press papers by members of our Centre and Impact Factor (2008)** **pag. 11**
- **Papers & Books in press** **pag. 12**
- **Scientific staff** **pag. 17**
- **Research Units** **pag. 18**
- **Appointments and administrative positions of members of our Centre** **pag. 20**
- **Lectures and Conferences** **pag. 22**
- **Research Grants** **pag. 23**
- **Main ongoing research projects 2008-2009** **pag. 26**

List of peer-reviewed Journals that published in 2008 papers by members of our Centre and Impact Factor (2008)

International Journals	Number of papers	Impact Factor	Total
<i>British Journal of Psychiatry</i>	1	5.077	5.077
<i>Canadian Medical Association Journal</i>	1	7.464	7.464
<i>Canadian Medical Association Journal [Letter]</i>	1	1.28	1.28
<i>Clinical Schizophrenia & Related Psychoses</i>	1	-	-
<i>CNS Drugs</i>	1	3.780	3.780
<i>Cochrane Database of Systematic Reviews</i>	1	5.182	5.182
<i>Epidemiologia e Psichiatria Sociale</i>	12	2.180	26.160
<i>European Psychiatry</i>	1	2.433	2.433
<i>Evidence Based Mental Health</i>	6	-	-
<i>Expert Review in Pharmacoeconomics and Outcome Research</i>	1	-	-
<i>Health Education</i>	1	-	-
<i>Human Molecular Genetics</i>	1	7.249	7.249
<i>International Clinical Psychopharmacology</i>	1	4.371	4.371
<i>Journal of Affective Disorders</i>	1	3.271	3.271
<i>Journal of Clinical Epidemiology</i>	1	2.896	2.896
<i>Journal of Clinical Psychiatry</i>	2	5.053	10.106
<i>Journal of Epidemiology and Community Health</i>	1	3.186	2.956
<i>Journal of Nervous and Mental Disorder</i>	1	1.810	1.810
<i>Journal of Psychiatry and Neurosciences</i>	1	4.123	4.123
<i>Mini-Reviews in Medicinal Chemistry</i>	1	3.132	3.132
<i>Nature</i>	1	31.434	31.434
<i>Psychiatric Services</i>	1	2.481	2.481
<i>Psychiatry Research</i>	1	2.666	2.666
<i>Psychological Medicine</i>	1	4.718	4.718
<i>Schizophrenia Research</i>	2	4.174	8.348
<i>World Psychiatry</i>	1	3.896	3.896
TOTAL	44		144.833

Papers & Books published in 2008

This list includes full papers, chapters of books and monographs and volumes published in 2008. The latest Impact Factor (I.F.) scores (2008) are indicated.

The list includes also Letters, but only those peer-reviewed and published in outstanding Journals. According to the rules of the Scientific Committee of the Medical School of the University of Verona these Letters are given an I.F. score that is 10% of the original score.

*Abstracts of papers presented at scientific Meetings and Congresses and posters are **NOT** included.*

For further information and for receiving copies of papers included in this list, please contact our Librarian:

Dr. Renato Fianco Tel. +39 045 812 6415 renato.fianco@univr.it

A) PAPERS PUBLISHED IN INTERNATIONAL JOURNALS

- Agarwal N., Rambaldelli G., Perlini C., Dusi N., Kitis O., Bellani M., Cerini R., Isola M., Versace A., Balestrieri M., Gasparini A., Pozzi Mucelli R., Tansella M. & Brambilla P. (2008). Microstructural thalamic changes in schizophrenia: a combined anatomical and diffusion weighted MRI study. *Journal of Psychiatry and Neurosciences* 33, 440-448. **I.F. 2008: 4.123**
- Agarwal N., Bellani M., Perlini C., Rambaldelli G., Atzori M., Cerini R., Vecchiato F., Pozzi Mucelli R., Andreone N., Balestrieri M., Tansella M. & Brambilla P. (2008). Increased fronto-temporal perfusion in bipolar disorder. *Journal of Affective Disorders* 110, 106-114. **I.F. 2008: 3.271**
- Amaddeo F. (2008). Risk of death from natural causes increased in people with psychiatric admissions. *Evidence Based Mental Health* 11, 106.
- Araszkiwicz A.A., Szabert K., Godman B., Wladyziuk M., Barbui C. & Haycox A. (2008). Generic olanzapine: health authority opportunity or nightmare? *Expert Review in Pharmacoeconomics and Outcome Research* 8, 549-555.
- Baiano M., Perlini C., Rambaldelli G., Cerini R., Dusi N., Bellani M., Spezzapria G., Versace A., Balestrieri M., Pozzi Mucelli R., Tansella M. & Brambilla P. (2008). Decreased entorhinal cortex volumes in schizophrenia. *Schizophrenia Research* 102, 171-180. **I.F. 2008: 4.174**
- Barbui C. (2008). Commentary on: Intramuscular haloperidol plus promethazine is more effective and safer than haloperidol alone for rapid tranquillisation of agitated mentally ill patients. *Evidence Based Mental Health* 11, 86-87.
- Barbui C. & Cipriani A. (2008). Commentary: Cognitive improvement after treatment with second-generation antipsychotic medications in first-episode schizophrenia - Is it a practice effect? *Evidence Based Mental Health* 11, 42.
- Barbui C. & Tansella M. (2008). The attitude of patients towards pharmacological and non-pharmacological treatments in psychiatry: implications for clinical practice, service organisation and research. *Epidemiologia e Psichiatria Sociale*, 17, 171-173. **I.F. 2008: 2.180**
- Barbui C. & Tansella M. (2008) Thirtieth birthday of the Italian psychiatric reform. Research for identifying its active ingredients is urgently needed. *Journal of Epidemiology and Community Health* 62, 1021. **I.F. 2008: 3.186**
- Barbui C., Cipriani A. & Geddes J. (2008). Antidepressants and suicide symptoms: compelling new insights from the FDA's analysis of individual patient level data. *Evidence Based Mental Health* 11, 34-36.
- Barbui C., Furukawa T.A. & Cipriani A. (2008). Effectiveness of paroxetine in the treatment of acute major depression in adults: a systematic re-examination of published and unpublished randomised data from randomized trials. *Canadian Medical Association Journal* 178, 296-305. **I.F. 2008: 7.464**
- Barbui C., Furukawa T.A. & Cipriani A. (2008). Effectiveness of selective serotonin reuptake inhibitors [Letter]. *Canadian Medical Association Journal* 178, 1185-1186. **I.F. 2008: 12.827 (10%= 1.28)**
- Bellani M. & Brambilla P. (2008). Is there a neurobiological basis of insight in schizophrenia? *Epidemiologia e Psichiatria Sociale* 17, 28-30. **I.F. 2008: 2.180**

- Bellani M. & Brambilla P. (2008). Social cognition, schizophrenia and brain imaging. *Epidemiologia e Psichiatria Sociale* 17, 117-119. **I.F. 2008: 2.180**
- Cipriani A. & Barbui C. (2008). What is an intention to treat analysis? *Epidemiologia e Psichiatria Sociale* 17, 26-27. **I.F. 2008: 2.180**
- Cipriani A. & Barbui C. (2008). Adding aripiprazole improves major depressive disorder following incomplete response to antidepressants alone (Commentary). *Evidence-Based Mental Health* 11, 15.
- Cipriani A., Dieterich M. & Barbui C. (2008). Atypical antipsychotics are effective adjuncts for treatment resistant depression but increase discontinuation due to adverse effects (Review). *Evidence-Based Mental Health* 11, 14.
- Cipriani A., Furukawa T., Geddes J.R., Malvini L., Signoretti A., McGuire H., Churchill R., Nakagawa A., Barbui C. & on behalf of the Multiple meta-Analyses of New Generation Antidepressants (MANGA) Study Group (2008). Does randomized evidence support sertraline as first-line antidepressant for adults with acute major depression? A systematic review and meta-analysis. *Journal of Clinical Psychiatry* 69, 1404-1415. **I.F. 2008: 5.053**
- Cipriani A., Nosè M. & Barbui C. (2008). Allocation concealment and blinding in clinical trials. *Epidemiologia e Psichiatria Sociale* 17, 115-116. **I.F. 2008: 2.180**
- Del Piccolo L., Mazzi M.A., Scardoni S., Gobbi M. & Zimmermann C. (2008). A theory based proposal to evaluate patient-centred communication in medical consultations: the Verona Patient-centred Communication rating scale (VR-COPE). *Health Education* 108, 355-372.
- Goss C., Moretti F., Mazzi M.A., Del Piccolo L., Rimondini M. & Zimmermann C. (2008). Involving patients in decisions during psychiatric consultations. *British Journal of Psychiatry* 193, 416-421. **I.F. 2008: 5.077**
- Howard L.M., Rigon E., Cole L., Lawlor C. & Johnson S. (2008). Admission to women's crisis houses or to psychiatric wards: women's pathways to admission. *Psychiatric Services* 59, 1443-1449. **I.F. 2008: 2.481**
- Kikkert M., Barbui C., Koeter M., Schene A., David A., Giessler P., Puschner B., Tansella M. & Gray R. (2008). Assessment of medication adherence in patients with schizophrenia. The Achilles heel of adherence research. *Journal of Nervous and Mental Disorder* 196, 274-281. **I.F. 2008: 1.810**
- Lasalvia A. & Tansella M. (2008). Fighting discrimination and stigma against people with mental disorders. *Epidemiologia e Psichiatria Sociale* 17, 1-9. **I.F. 2007: 2.180**
- Lasalvia A., Bonetto C., Tansella M., Stefani B. & Ruggeri M. (2008). Assessing staff-patient agreement on needs for care to predict mental health outcome. A 4-year follow-up in a community service. *Psychological Medicine* 38, 123-133. **I.F. 2008: 4.718**
- Leese M., Schene A., Koeter M., Meijer K., Bindman J., Mazzi M., Puschner B., Burti L., Becker T., Moreno M, Celani D., White I. R. & Thornicroft G. (2008). SF-36 scales, and simple sums of scales, were reliable quality-of-life summaries for patients with schizophrenia. *Journal of Clinical Epidemiology* 61, 588-596. **I.F. 2008: 2.896**
- Mazzucco S., Cipriani A., Barbui C. & Monaco S. (2008). Antipsychotic drugs and cerebrovascular events in elderly patients with dementia: a systematic review. *Mini-Reviews in Medicinal Chemistry* 8, 776-783. **I.F. 2008: 3.132**
- Mulè S., Cipriani A. & Barbui C. (2008). Aripiprazole in addition to clozapine in partially responsive patients with schizophrenia: a critical review of case series. *Clinical Schizophrenia & Related Psychoses* 1, 341-347.
- Nakagawa A., Watanabe N., Omori I., Barbui C., Cipriani A., McGuire H., Churchill R., Furukawa T. & on behalf of the Multiple meta-Analyses of New Generation Antidepressants (MANGA) Study Group (2008). Efficacy and acceptability of milnacipran in the treatment of major depression in comparison with other antidepressants: a systematic review and meta-analysis. *CNS Drugs* 22, 587-602. **I.F. 2008: 3.780**
- Nosè M. (2008). Tolerability of antipsychotic drugs: does patient perspective deserve consideration? *Epidemiologia e Psichiatria Sociale* 17, 182-185. **I.F. 2008: 2.180**
- Nosè M. & Barbui C. (2008). A simple approach to manage dosages in drug-epidemiology research. *Epidemiologia e Psichiatria Sociale* 17, 186-187. **I.F. 2008: 2.180**

- Nosè M., Tansella M., Thornicroft G., Schene A., Becker T., Veronese A., Leese M., Koeter M., Angermeyer M & Barbui C. (2008). Is the *Defined Daily Dose* system a reliable tool for standardizing antipsychotic dosages? *International Clinical Psychopharmacology* 23, 287-290. **I.F. 2008: 4.371**
- Paccaloni M., Pozzan T., Pozzan T. & Zimmermann C. (2008). La comunicazione della diagnosi di schizofrenia. Il punto di vista degli psichiatri raccolto attraverso il metodo dei focus group. *Epidemiologia e Psichiatria Sociale* 17, 65-76. **I.F. 2008: 2.180**
- Rossi A., Amaddeo F., Sandri M., Marsilio A., Bianco M. & Tansella M. (2008). What happens to patients seen once-only by psychiatric services? Findings from a follow-up study. *Psychiatry Research* 157, 53-65. **I.F. 2008: 2.666**
- Ruggeri M., Lasalvia A., De Santi K., Cristofalo D. & Bonetto C. (2008). Disability and clinical course of severe mental illness. *European Psychiatry* 23, S24. **I.F. 2008: 2.433**
- Ruggeri M. & Tansella M. (2008). Improving the treatment of schizophrenia in real world mental health services. *Epidemiologia e Psichiatria Sociale* 17, 249-253. **I.F.: 2008: 2.180**
- Ruggeri M. & Tansella M. (2008). Case management or assertive community treatment: are they really alternative approaches? *Epidemiologia e Psichiatria Sociale* 17, 93-98. **I.F. 2008: 2.180**
- Rujescu D., Ingason I., Cichon S., Pietiläinen Olli P.H., Barnes M.R., Touloupoulou T., Picchioni M., Vassos E., Bramon E., Murray R., Ruggeri M., Tosato S., Bonetto C., Steinberg S., Sigurdsson E., Sigmundsson T., Petursson H., Gylfason A., Olason P.I., Hardarsson G., Jonsdottir G.A., Gustafsson O., Fossdal R., Giegling I., Möller H.-J., Hartmann A., Hoffmann P., Crombie C., Fraser G., Walker N., Lonnqvist J., Suvisaari J., Tuulio-Henriksson A., Andreassen O.A., Djurovic S., Hansen T., Werge T., Melle I., Kiemeny L.A., Franke B., Buizer-Voskamp J.E., Ophoff R.A., GROUP Investigators, Rietschel M., Nöthen M.M., Stefansson K., Peltonen L., St Clair D., Stefansson H. & Collier D.A. (2008). Disruption of the neurexin 1 gene is associated with schizophrenia. *Human Molecular Genetics* (Advance Access published on October 22, 2008). **I.F. 2008: 7.249**
- Stefansson H., Rujescu D., Cichon S., Pietiläinen Olli P.H., Ingason A., Steinberg S., Fossdal R., Sigurdsson E., Sigmundsson T., Buizer-Voskamp J.E., Hansen T., Jakobsen K.D., Muglia P., Francks C., Matthews P.M., Gylfason A., Halldorsson B.V., Gudbjartsson D., Thorgeirsson T.E., Sigurdsson A., Jonasdottir A., Jonasdottir A., Bjornsson A., Mattiasdottir S., Blondal T., Haraldsson M., Magnusdottir B.B., Giegling I., Moller H.-J., Hartmann A., Shianna K.V., Ge D., Need A.C., Crombie C., Fraser G., Walker N., Lonnqvist J., Suvisaari J., Tuulio-Henriksson A., Paunio T., Touloupoulou T., Bramon E., Di Forti M., Murray R., Ruggeri M., Vassos E., Tosato S., Walshe M., Li T., Vasilescu C., Muhleisen T.W., Wang A.G., Ullum H., Djurovic S., Melle I., Olesen J., Kiemeny L.A., Franke B., Group, Sabatti C., Freimer N.B., Gulcher J.R., Thorsteinsdottir U., Kong A., Andreassen O.A., Georgi A., Rietschel M., Werge T., Petursson H., Goldstein D.B., Nöthen M.M., Peltonen L., Collier D., St Clair D. & Stefansson K. (2008). Large recurrent microdeletions associated with schizophrenia. *Nature* 455, 232-237. **I.F. 2008: 31.434**
- Tavano A., Sponda S., Fabbro F., Perlini C., Rambaldelli G., Ferro A., Cerruti S., Tansella M. & Brambilla P. (2008). Specific linguistic and pragmatic deficits in Italian patients with schizophrenia. *Schizophrenia Research* 102, 53-62. **I.F. 2008: 4.174**
- Thornicroft G., Tansella M. & Law A. (2008). Steps, challenges and lessons in improving community mental health care. *World Psychiatry* 7, 87-92. **I.F. 2008: 3.896**
- Veronese A., Vivenza V., Nosè M., Cipriani A., Tansella M. & Barbui C. (2008). Understanding antipsychotic non-classical prescriptions: a quantitative and qualitative approach. *Epidemiologia e Psichiatria Sociale* 17, 236-241. **I.F. 2008: 2.180**
- Veronese A., Hunot V., Cipriani A., Churchill R. & Barbui C. (2008). Psychological therapies versus pharmacotherapy for obsessive compulsive disorder (Protocol). *Cochrane Database of Systematic Reviews* Issue 3. **I.F. 2008: 5.182**
- Watanabe N., Omori I.M., Nakagawa A., Cipriani A., Barbui C., McGuire H., Churchill R. & Furukawa T.A. (2008). Mirtazapine versus other antidepressants in the acute-phase treatment of adults with major depression: Systematic review and meta-analysis. *Journal of Clinical Psychiatry* 69, 1404-1415, 2008. **I.F. 2008: 5.053**

B) PAPERS AND REVIEWS PUBLISHED IN INTERNATIONAL BOOKS AND MONOGRAPHS

Tansella M., Thornicroft G. & Susser E. (2008). Community psychiatry and service delivery models. In *Essential Psychiatry*, Forth Edition (ed. R. Murray, K.S. Kendler, P. McGuffin, S. Wessely and D.J. Castle), pp. 498-514. Cambridge University Press: Cambridge.

C) PAPERS PUBLISHED IN ITALIAN JOURNALS

Chioffi L., Morgante S., Berti L., Costa L., De Noni N., Faggionato G., Rebonato V., Soave D., Valenari L., Valsecchi M. e Burti L. (2008). Promozione della salute fisica: Un intervento con i pazienti psichiatrici. *Dialogo sui Farmaci* 9, 232-234.

Esposito E. & Barbui C. (2008). Strategie per il depresso lieve e per quello irriducibile. *Occhio Clinico*, 1, 20-23.

D) PAPERS PUBLISHED IN ITALIAN BOOKS AND MONOGRAPHS

Amaddeo F. (2008). I costi dei disturbi dell'umore. In *Lo Spettro dell'Umore. Psicopatologia e Clinica* (ed. G. Cassano e A. Tundo). Elsevier Editore: Milano.

Lasalvia A. & Ruggeri M. (2008). La valutazione degli esiti in salute mentale: problemi ed obiettivi. In *La Comunità Terapeutica. Istruzione per l'Uso* (ed. F. Asioli and M. Purpura). Biblink Omnia: Roma.

Tansella M. (2008). La formazione degli operatori della salute mentale e l'educazione alla salute. In *L'Educazione alla Salute. Rapporto Sanità 2008* (a cura di G.F. Gensini, P. Rizzini, M. Trabucchi e F. Vanara), pp. 125-136. Il Mulino: Bologna.

Tansella M. & Barbui C. (2008). Prefazione al capitolo "Psichiatria". In *Clinical Evidence Conciso*. Edizione Italiana. p. 199. AIFA: Roma.

**List of peer-reviewed Journals that published in 2009 or
have in press papers by members of our Centre
and Impact Factor (2008)**

International Journals	Number of papers	Impact Factor	Total
<i>Biochemical Society Transiction</i>	2	2.979	5.958
<i>British Journal of Psychiatry</i>	2	5.077	10.154
<i>British Medical Journal</i>	1	12.827	12.827
<i>Canadian Medical Association Journal</i>	1	7.464	7.464
<i>Cochrane Database of Systematic Reviews</i>	7	5.182	36.274
<i>Current Pharmaceutical Design</i>	1	4.399	4.399
<i>Epidemiologia e Psichiatria Sociale</i>	11	2.180	23.980
<i>European Neuropsychopharmacology</i>	1	3.661	3.661
<i>International Journal of Methods in Psychiatric research</i>	2	1.979	3.958
<i>International Review of Psychiatry</i>	3	1.563	4.689
<i>Journal of Clinical Epidemiology</i>	2	2.896	5.792
<i>Journal of Clinical Psychopharmacology</i>	1	4.371	4.371
<i>Journal of Mental Health Policy and Economics</i>	1	1.806	1.806
<i>Journal of Psychopharmacology</i>	1	4.063	4.063
<i>Lancet</i>	1	28.409	28.409
<i>Lancet [Letter]</i>	1	2.84	2.84
<i>Nature [Letter]</i>	1	31.434	31.434
<i>Psychiatry Research</i>	1	2.666	2.666
<i>Psychological Medicine</i>	2	4.718	9.436
<i>Psychopathology</i>	1	1.417	1.417
<i>Quality of Life Research</i>	1	2.169	2.169
<i>Schizophrenia Research</i>	1	4.174	4.174
<i>Schizophrenia Bulletin</i>	1	6.592	6.952
<i>Social Psychiatry and Psychiatric Epidemiology</i>	1	1.959	1.959
<i>Trials</i>	1	1.743	1.743
<i>World Journal of Biological Psychiatry</i>	1	3.582	3.582
TOTAL	49		226.177

A) PAPERS ACCEPTED FOR PUBLICATION IN INTERNATIONAL JOURNALS

- Amaddeo F. & Tansella M. (2009). Information systems for mental health. *Epidemiologia e Psichiatria Sociale* 18, 1-4.
I.F. 2008: 2.180
- Barbui C. & Cipriani A. (2009). Commentary: Maintenance antidepressants reduce risk of relapse but effect is not as great in recurrent depression. *Evidence-Based Mental Health* 12, 79.
- Barbui C. & Tansella M. Suicide prevention strategies and mental disorders. *Epidemiologia e Psichiatria Sociale*, in press.
I.F. 2008: 2.180
- Barbui C., Esposito E. & Cipriani A. (2009). Selective serotonin reuptake inhibitors and risk of suicide: a systematic review of observational studies. *Canadian Medical Association Journal* 180, 291-297. **I.F. 2008: 7.464**
- Barbui C., Signoretti A., Mulè S., Boso M. & Cipriani A. Does the addition of a second antipsychotic drug improve Clozapine treatment? *Schizophrenia Bulletin*, 35, 458-468
I.F. 2008: 6.592
- Barbui C., Kikkert M., Mazzi M.A., Becker T., Bindman J., Schene A., Nosè M., Helm H., Thornicroft G., & Tansella M. Predictors of patient and clinician rating of antipsychotic medication adherence in patients with schizophrenia. *Psychopathology*, in press.
I.F. 2008: 1.417
- Barbui C., Andretta A.R., De Vitis G., Rossi E., D'Arienzo F., Mezzalana L., De Rosa M., Cipriani A., Berti A., Nosè M., Tansella M. & Bozzini L. (2009). Antidepressant drug prescription and risk of abnormal bleeding. A case-control study. *Journal of Clinical Psychopharmacology* 29, 33-38.
I.F. 2008: 4.371
- Bellani M. & Brambilla P. The use and meaning of the continuous performance test in schizophrenia. *Epidemiologia e Psichiatria Sociale*, in press.
I.F. 2008: 2.180
- Bellani M., Marzi C.A. & Brambilla P. Interhemispheric communication in schizophrenia. *Epidemiologia e Psichiatria Sociale*, in press.
I.F. 2008: 2.180
- Bellani M., Tomelleri L. & Brambilla P. Emotion-based decision making in schizophrenia: evidence from the Iowa Gambling Task. *Epidemiologia e Psichiatria Sociale*, in press.
I.F. 2008: 2.180
- Bellani M., Agarwal N., Perlini C., Rambaldelli G., Cerini R., Ferro A., Cerruti S., Andreone N., Balestrieri M., Pozzi Mucelli R., Tansella M. & Brambilla P. Diffusion imaging study of the corpus callosum in bipolar disorder. *Biochemical Society Transaction*, in press.
I.F. 2008: 2.979
- Bellani M., Yeh P.-H., Tansella M., Balestrieri M., Soares J.C. & Brambilla P. DTI studies of corpus callosum in bipolar disorder. *Biochemical Society Transactions*, in press.
I.F. 2008: 2.979
- Brambilla P. & Tansella M. (2009). What are the perspectives of human brain mapping in the field of bipolar disorder? *International Review of Psychiatry* 21, 295-296..
I.F. 2008: 1.563
- Brambilla P., Bellani M, Yeh P-H, Soares J.C. & Tansella M. (2009). White matter connectivity in bipolar disorder. *International Review of Psychiatry* 21, 380-386.
I.F. 2008: 1.563
- Brambilla P., Bellani M., Yeh P.H. & Soares J.C. Myelination in bipolar patients and the effects of mood stabilizers on white matter. *Current Pharmaceutical Design*, in press.
I.F. 2008: 4.399
- Brambilla P., Soares J.C. & Tansella M. Diffusion imaging studies in bipolar disorder. *International Review of Psychiatry*, in press.
I.F. 2008: 1.563
- Buchsbaum, M.S., Haznedar, M., Newmark, R.E., Chu, K.-W., Dusi, N., Entis, J.J., Goldstein, K.E., Goodman, K.R., Gupta, A., Hazlett, E., Iannuzzi, J., Torosjan, Y., Zhang, J., & Wolkin, A. FDG-PET and MRI imaging of the effects of sertindole and haloperidol in the prefrontal lobe in schizophrenia. *Schizophrenia Research*, in press.
I.F. 2008: 4.174
- Burti L., Mazzi M., Koeter M., Schene A., Helm H., Puschner B., Bindman J., Leese M., Thornicroft G. & Tansella M. An empirical method to identify patterns in the course of psychotic episodes of people with schizophrenia. *International Journal of Methods in Psychiatric Research*, in press.
I.F. 2008: 1.979

- Castellani U., Rossato E., Murino V., Bellani M., Rambaldelli G., Tansella M. & Brambilla P. Local Kernel for brain classification in schizophrenia. *Lecture Notes in Artificial Intelligence*, in press.
- Churchill R., Caldwell D., McGuire H., Barbui C., Cipriani A., Furukawa T., Watanabe N. & Lewis J. (2009). Reboxetine versus other antidepressive agents for depression (Protocol). *Cochrane Database of Systematic Reviews* Issue 2. **I.F. 2008: 5.182**
- Cipriani A., Boso M. & Barbui C. (2009). Clozapine combined with different antipsychotic drugs for treatment resistant schizophrenia. *Cochrane Database of Systematic Reviews* Issue 3. **I.F. 2008: 5.182**
- Cipriani A., Purgato M. & Barbui C. (2009). Why internal and external validity of experimental studies are important for clinical practice? *Epidemiologia e Psichiatria Sociale* 18, 101-103. **I.F. 2008: 2.180**
- Cipriani A., Rendell J. & Geddes J.R. (2009). Olanzapine in long-term treatment for bipolar disorder. *Cochrane Database of Systematic Reviews* Issue 1, CD004367. **I.F. 2008: 5.182**
- Cipriani A., Furukawa T.A., Salanti G., Geddes J.R., Higgins J.P.T., Churchill R., Watanabe N., Nakagawa A., Omori I.M., McGuire H., Tansella M. & Barbui C. (2009). Comparative efficacy and acceptability of 12 new generation antidepressants: a multiple treatments meta-analysis and database. *Lancet* 373, 746-758. **I.F. 2008: 28.409**
- Cipriani A., La Ferla T., Furukawa T., Signoretti A., Nakagawa A., Churchill R., McGuire H. & Barbui C. (2009c). Sertraline versus other antidepressive agents for depression. *Cochrane Database of Systematic Reviews* Issue 2. **I.F. 2008: 5.182**
- Cipriani A., Santilli C., Furukawa T., Signoretti A., Nakagawa A., McGuire H., Churchill R. & Barbui C. (2009f). Escitalopram versus other antidepressive agents for depression. *Cochrane Database of Systematic Reviews* Issue 2. **I.F. 2008: 5.182**
- Cipriani A., Geddes J.R., Furukawa T.A., Salanti G. & Barbui C. (2009). Ranking antidepressants. Authors' reply [Letter] *Lancet* 373, 1761-1762. **I.F. 2008: 28.409 (10%= 2.84)**
- Dieterich M, Irving CB, Marshall M. (2009). Intensive Case Management for severe mental illness (Protocol). *Cochrane Database of Systematic Reviews* Issue 3. **I.F. 2008: 5.182**
- Elamin M.B., Flynn D.N., Bassler D., Briel M., Alonso-Coello P., Karanicolas P.J., Guyatt G.H., Malaga G., Furukawa T., Kunz R., Schünemann H., Murad M.H., Barbui C., Cipriani A. & Montori V.M. (2009). Choice of data extraction tools for systematic reviews depends on resources and review complexity. *Journal of Clinical Epidemiology* 62, 506-510. **I.F. 2008: 2.896**
- Esposito E. (2009). Short term use of antipsychotics increases the risk of serious adverse events in elderly people with dementia. *Evidence-Based Mental Health* 12, 23.
- Esposito E., Cipriani A. & Barbui C. (2009). Outcome reporting bias in clinical trials. *Epidemiologia e Psichiatria Sociale* 18, 17-18. **I.F. 2008: 2.180**
- Geddes J., Barbui C. & Cipriani A. Risk of suicide in adults taking antidepressants. *British Medical Journal*, in press. **I.F. 2008: 12.827**
- Grigoletti L., Perini G., Rossi A., Biggeri A., Barbui C., Tansella M. & Amaddeo F. Mortality and cause of death among psychiatric patients. A twenty year case-register study in an area with a community-based system of care. *Psychological Medicine*, in press. **I.F. 2008: 4.718**
- Kikkert M., Koeter M., Dekker J., Burti L., Robson D., Puschner B. & Schene A. The predictive validity of subjective adherence measures in patients with schizophrenia. *International Journal of Methods in Psychiatric Research*, in press. **I.F. 2007: 1.979**
- Lasalvia A. & Tansella M. (2009). Childhood trauma and psychotic disorders: research evidence, theoretical perspective and implications for intervention. *Epidemiologia e Psichiatria Sociale*, in press. **I.F. 2008: 2.180**
- Lasalvia, A., Bonetto, C., Bertani, M.E., Bissoli, S., Cristofalo, D., Marrella, G., Ceccato, E., Cremonese, C., De Rossi, M., Lazzarotto, L., Marangon, V., Morandin, I., Zucchetto, M., Tansella, M., Ruggeri, M., & on behalf of the PICOS-Veneto Group. Influence of perceived organizational factors on job burnout. A survey of staff working in Italian community mental health services. *British Journal of Psychiatry*, in press. **I.F. 2008: 5.077**

- Leese M., Schene A., Koeter M., Meijer K., Bindman J., Mazzi M., Puschner B., Burti L., Becker T., Moreno M., Celani D., White I.R. & Thornicroft G. (2009). SF-36 scales, and simple sums of scales, were reliable quality-of-life summaries for patients with schizophrenia. *Journal of Clinical Epidemiology* 61, 588-596.
I.F. 2008: 2.896
- Lempp H., Thornicroft G., Leese M., Fearn N., Graves H., Koshabha B., Lasalvia A., Scott D. & Tansella M. Implications of long-term conditions for both mental and physical health: comparison of rheumatoid arthritis and schizophrenia. *Quality of Life Research*, in press.
I.F. 2008: 2.169
- Mazzoncini R., Zoli M., Tosato S., Lasalvia A. & Ruggeri M. (2009). Can the role of genetic factors in schizophrenia be enlightened by studies of candidate gene mutant mice behaviour? *World Journal of Biological Psychiatry*, 1-20.
I.F. 2008: 3.582
- McCrone,P., Patel,A., Knapp,M., Schene,A., Koeter,M., Amaddeo,F., Ruggeri,M., Giessler,A., Puschner,B., & Thornicroft,G. (2009) A comparison of SF-6D and EQ-5D utility scores in a study of patients with schizophrenia. *Journal of Mental Health Policy and Economics* 12, 27-31.
I.F. 2008: 1.806
- Nakagawa A., Watanabe N., Omori I., Barbui C., Cipriani A., McGuire H., Churchill R. & Furukawa T. (2009). Milnacipran versus other antidepressive agents for depression. *Cochrane Database of Systematic Reviews* Issue 3.
I.F. 2008: 5.182
- Nosè M., Accordini S., Artioli P., Barale F., Barbui C., Beneduce R., Berardi D., Bertolazzi G., Biancosino B., Bisogno A., Bivi R., Bogetto F., Boso M., Bozzani A., Bucolo P., Casale M., Cascone L., Ciammella L., Cicolini A., Cipresso G., Cipriani A., Colombo P., Dal Santo B., De Francesco M., Di Lorenzo G., Di Munzio W., Ducci G., Erlicher A., Esposito E., Ferrannini L., Ferrato F., Ferro A., Fragomeno N., Fricchione Parise V., Frova M., Gardellin F., Garzotto N., Giambartolomei A., Giupponi G., Grassi L., Grazian N., Grecu L., Guerrini G., Laddomada F., Lazzarin E., Lintas C., Malchiodi F., Malvini L., Marchiaro L., Marsilio A., Mauri M.C., Mautone A., Menchetti M., Migliorini G., Mollica M., Moretti D., Mulè S., Nicolaou S., Nosè F., Occhionero G., Pacilli A.M., Pecchioli S., Percudani M., Piantato E., Piazza C., Pontarollo F., Pycha R., Quartesan R., Rillosi L., Risso F., Rizzo R., Rocca P., Roma S., Rossattini M., Rossi G., Rossi G., Sala A., Santilli C., Saraò G., Sarnicola A., Sartore F., Scarone S., Sciarma T., Siracusano A., Strizzolo S., Tansella M., Targa G., Tasser A., Tomasi R., Travaglini R., Veronese A. & Ziero S. (2009). Rationale and design of an independent randomised controlled trial evaluating the effectiveness of aripiprazole or haloperidol in combination with clozapine for treatment-resistant schizophrenia (Protocol). *Trials* 10, 1-9.
I.F. 2008: 1.743
- Omori I., Watanabe N., Nakagawa A., Akechi T., Cipriani A., Barbui C., McGuire H., Churchill R., Furukawa T. & on behalf of the Multiple meta-Analyses of New Generation Antidepressants (MANGA) Study Group (2009). Efficacy, tolerability and side effect profile of fluvoxamine for major depression: meta-analysis. *Journal of Psychopharmacology* 23, 539-550.
I.F. 2008: 4.063
- Puschner B., Angermeyer M.C., Leese M., Thornicroft G., Schene A., Kikkert M., Burti L., Tansella, M. & Becker T. (2009). Course of adherence to medication and quality of life in people with schizophrenia. *Psychiatry Research* 165, 224-233.
I.F. 2008: 2.666
- Rimondini M., Del Piccolo L., Goss C., Mazzi M.A., Paccaloni M. & Zimmermann C. The evaluation of training in patient-centred interviewing skills for psychiatric residents. *Psychological Medicine*, in press
I.F. 2008: 4.718
- Rossi A., Morgan V., Amaddeo F., Sandri M., Grigoletti L., Maggioni F., Ferro A., Rigon E., Donisi V., Vailati Venturi V., Gorla F., Skre I., Tansella M. & Jablensky A. Diagnosing psychotic disorders: validity, reliability and applications of the Diagnostic Interview for Psychosis (DIP) Italian version. *Epidemiologia e Psichiatria Sociale*, in press.
I.F. 2008: 2.180
- Ruggeri M. & Tansella M. (2009). The interaction between genetics and epidemiology: the puzzle and its pieces. *Epidemiologia e Psichiatria Sociale* 18, 77-80.
I.F. 2008: 2.180
- Stefansson H., Ophoff R.A., Steinberg S., Andreassen O.A., Chichon S., Rujescu D., Werge T., Pietiläinen O.P., Mors O., Mortensen P.B., Sigurdsson E., Gustafsson O., Nyegaard M., Tuulio-Henriksson A., Ingason A., Hansen T., Suvisaari J., Lonnqvist J., Paunio T., Borglum A.D., Hartmann A., Fink-Jensen A., Nordentoft M., Hougaard D., Norgaard-Petersen B., Böttcher J., Olesen J., Breuer R., Möller H.-J., Giegling I., Rasmussen H.B., Timm S., Mattheisen M., Bitter I., Réthelyi J.M., Magnusdottir B.B., Sigmundsson T., Olason P.I., Masson G., Gulcher J.R., Haraldsson M., Fossdal R., Thorgeirsson T.E., Thorsteinsdottir U., Ruggeri M., Tosato S., Franke B., Strengman E., Kiemenev L.A., Group, Melle I., Djurovic S., Abramova I., Kaleda V., Sanjuan J., de Frutos R., Bramon E., Vassos E., Fraser G., Ettinger U., Picchioni M., Walker N., Toulopoulou T., Need A.C., Ge D., Lim Yoon J., Shianna K.V., Freimer N.B., Cator R.M., Murray R., Kong A., Golimbet V., Carracedo A., Arango C., Costas J., Jönsson E.G., Terenius L., Agartz I., Petursson H., Nöthen M.M., Rietschel M., Matthews P.M., Muglia P., Peltonen L., St Clair D., Goldstein D.B., Stefansson H., Collier D.,

Genetic Risk and Outcome in Psychosis (GROUP), Kahn R.S., Linszen D.H., Van Os J., Wiersma D., Bruggeman R., Cahn H., de Haan L., Krabbendam L. & Myin-Germeys I. (2009). Common variants conferring risk of schizophrenia [Letter]. *Nature* Jul 1, 1-5. **I.F. 2008: 31.434**

Tansella M & Thornicroft G. Implementation science: understanding the translation of evidence into practice. *British Journal of Psychiatry*, in press. **I.F. 2008: 5.077**

Tomelleri L., Jogia J., Perlini C., Bellani M., Ferro A., Rambaldelli G., Tansella M., Frangou S., Brambilla P. on behalf of The Neuroimaging Network of the ECNP networks initiative. Brain structural changes associated with chronicity and antipsychotic treatment in schizophrenia. *European Neuropsychopharmacology*, in press. **I.F. 2008: 3.661**

Tosato S. & Lasalvia A. (2009). The contribution of epidemiology to defining the most appropriate approach to genetic research on schizophrenia. *Epidemiologia e Psichiatria Sociale* 18, 81-90. **I.F. 2008: 2.180**

Zavradashvili N., Donisi V., Grigoletti L., Pertile R., Gelashvili K., Eliashvili M. & Amaddeo F. Is the implementation of assertive community treatment in a low-income country feasible? The experience of Tbilisi, Georgia. *Social Psychiatry and Psychiatric Epidemiology*, in press **I.F. 2008: 1.959**

B) PAPERS AND REVIEWS ACCEPTED FOR PUBLICATION IN INTERNATIONAL BOOKS AND MONOGRAPHS

Barbui C. & Tansella M. Identification and management of mental distress in primary care: Focus on depression. In *Psiquiatria en Atención Primaria*, Second Edition (ed. J.L. Vazquez-Barquero), Aula Medica: Madrid, in press.

Brambilla P. & Tansella M. (ed.) (2009). Mapping bipolar disorder with brain imaging: update and perspectives. In *Special Issue of International Review of Psychiatry*, Volume 21, Issue No. 4, August 2009, pp. 295-423. Informa Healthcare: New York.

Gulbinat W., Amaddeo F., Ito H., Medina-Mora E., Mubbashar M., Ndeti D. & Plovnick R. Background paper from the statistics and information systems Conference Expert Group (CEG) for the conference on public health aspects of diagnosis and classification. In *Statistics and Information System 2008*. World Health Organisation: Geneva, in press.

Slade M., Glover G., Thornicroft G. & Tansella M. Measuring the needs of people with mental illness. In *Oxford Textbook of Community Mental Health*, 2nd Ed. (ed. G. Thornicroft, G. Szmukler, K. Mueser and B. Drake). Oxford University Press: Oxford, in press.

Slade M., Thornicroft G. & Tansella M. (2009). Service needs of individuals and populations. In *New Oxford Textbook of Psychiatry*, 2nd Ed. (ed. M.G. Gelder, J.J. Lopez Ibor, N. Andreasen & J. Geddes), pp. 1432-1437. Oxford University Press: Oxford.

Tansella M. Alternatives to standard acute in-patient care for people with mental disorders. From systematic description to evaluative research. *British Journal of Psychiatry*. Supplement on *Residential Alternatives to Standard In-Patient Wards* (ed. S. Johnson), in press.

Thornicroft G. & Tansella M. Psychosocial interventions for mental health. In *Randomized Clinical Trials of Nonpharmacologic Treatments*. (ed. I. Boutron, Ph. Ravaud & D. Moher), in press.

C) PAPERS ACCEPTED FOR PUBLICATION IN ITALIAN JOURNALS

Amaddeo F., Burti L., Ruggeri M. & Tansella M. (2009). A scientific approach for long-term monitoring and evaluation of a new system of community-based psychiatric care. Integrating research, teaching and practice at the University of Verona. *Annali dell'Istituto Superiore di Sanità*, 45, 43-53.

Cipriani A. & Barbui C. (2009). Sicurezza ed efficacia: il confronto tra i tanti antidepressivi. *Focus Farmacovigilanza* 56.

Esposito E, Cipriani A, Barbui C. Antipsicotici e schizofrenia: quale farmaco scegliere? *Focus Farmacovigilanza*, in press.

Toniolo E., Guareschi S., Andreotti L., Marangoni R., Grossi A. & Lasalvia A. Le opinioni riguardo le persone con disturbi mentali e l'assistenza psichiatrica. I risultati di un'indagine nell'area polesana. *Psichiatria di Comunità*, in press.

D) PAPERS ACCEPTED FOR PUBLICATION IN ITALIAN BOOKS AND MONOGRAPHS

Tansella M. (2009) La valutazione scientifica dei trattamenti in medicina ed il ritardo della psichiatria. In *Filosofia della Medicina. Modelli, Metodo, Cura ed Errori*. (a cura di P. Giaretta, A. Moretto, G.F. Gensini e M. Trabucchi), pp. 125-149. Il Mulino: Bologna.

Tansella M. La psichiatria tra ricerca “theory enhancing”, ricerca “change promoting” e pratica clinica. Una sfida sostenibile. In *Essential Psychiatry* (ed. R.M. Murray, K.S. Kendler, P. McGuffin, S. Wessely & D.J. Castle) (Cambridge University Press: Cambridge). Edizione Italiana *Fondamenti di Psichiatria*, CG Edizioni Medico Scientifiche: Torino, in press.

Thornicroft G. & Tansella M. Le basi di un’assistenza psichiatrica migliore: principi etici, evidenze scientifiche ed esperienze di buona pratica clinica. In *Better Mental Health Care* (ed. G. Thornicroft & M. Tansella) (Cambridge University Press: Cambridge). Edizione Italiana *Un’Assistenza Psichiatrica Migliore*, CIC International: Roma.

E) INTERNATIONAL BOOKS IN PRESS

Thornicroft G. & Tansella M. (2009). *Better Mental Health Care*. Cambridge University Press: Cambridge.

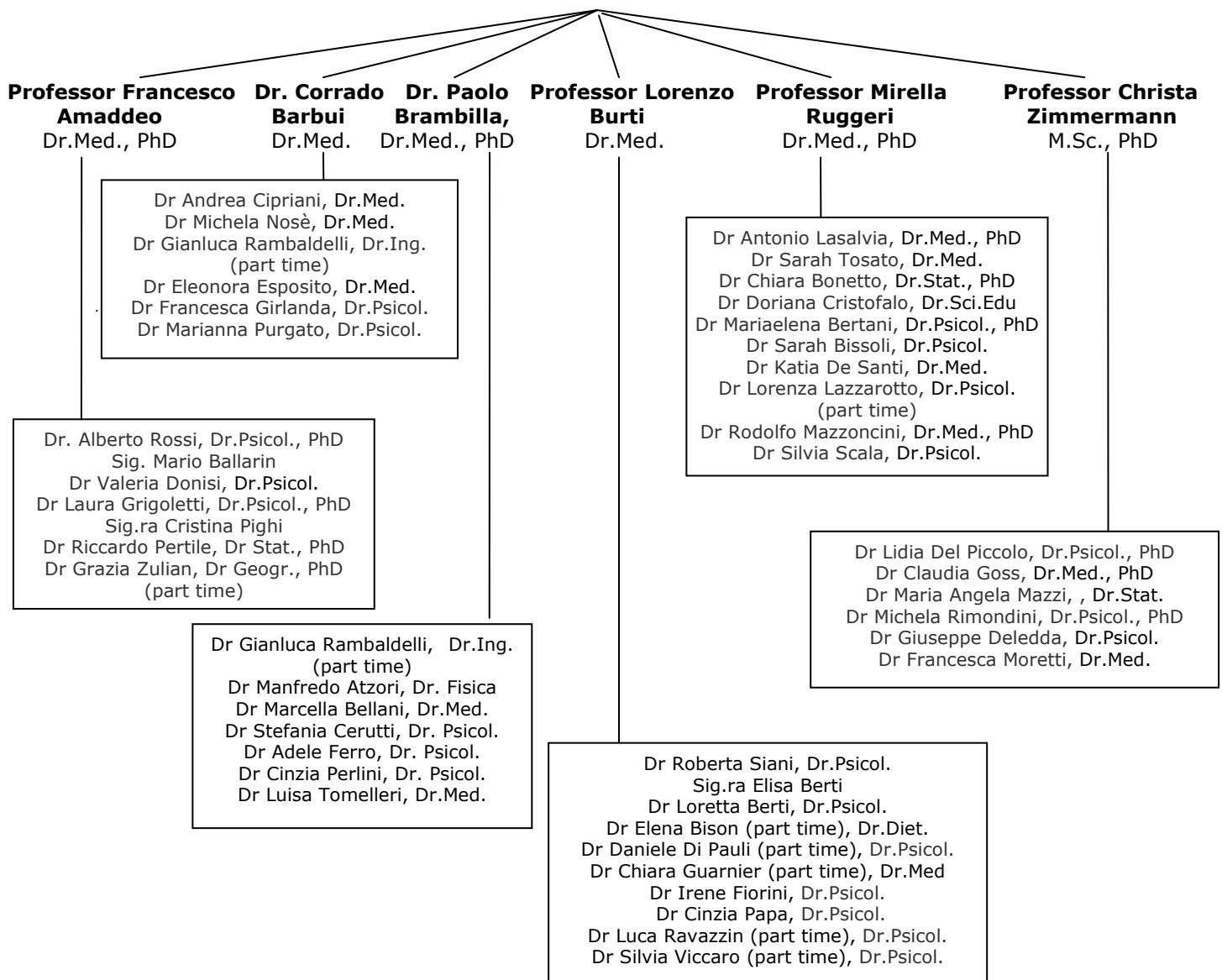
Thornicroft & Tansella M. (Ed.). *Mental Health Outcome Measures*, 3rd Ed. Gaskell: London, in press.

A) ITALIAN BOOKS IN PRESS

Thornicroft G. & Tansella M. *Un’Assistenza Psichiatrica Migliore*, CIC International: Roma, in press

Scientific Staff

**Professor Michele Tansella, Dr.Med.
(Head)**



The main research activities carried out by the six Research Units are the following:

1) Psychiatric Register, Economics and Geography of Mental Health

Coordinator: Professor Francesco Amaddeo

A psychiatric case register (PCR) was started on 31 December 1978 and is used for clinical, administrative and research purposes. For research, the PCR is used for: longitudinal analyses of patterns of care; studies on incidence and prevalence and related factors; services utilisation; comparisons with other case-register areas; and costs of care and outcome. The PCR has facilitated the detailed observation of changes in Italian mental health care since the Italian psychiatric reform.

The Unit has been conducted a series of studies in prevalence and incidence samples to explore the relationships between the socio-demographic and clinical characteristics of patients and the costs of community-based mental health care, to study the mortality of psychiatric patients, to assess the association between Socio-Economic Status (SES), services utilisation and costs.

Recently, the Unit has participated to a national study (funded by the Ministry of Health) that has permitted to develop a new funding system. The Unit is coordinating Centre for a National study on "Socio-economic status, urbanisation and mental health" that use an health geography approach.

The Unit is actually collaborating with the WHO centres based in Ginevra and Copenhagen on a research project consisting in an evaluation of the psychiatric assistance in Ukraine, Georgia and Moldova.

2) Clinical Psychopharmacology and Drug Epidemiology

Coordinator: Dr. Corrado Barbui

The main research interests of the Unit include: (a) pharmacoepidemiology, oriented to describe the beneficial and harmful effects of psychotropic drugs in ordinary practice; (b) randomised clinical trials, oriented to assess the efficacy and tolerability profile of psychotropic drugs in experimental conditions; (c) systematic reviews, oriented to summarize clinical trial findings using meta-analytical techniques. Recent achievements of the Unit include the development of a psychotropic register that collects information on psychotropic drugs prescribed within the South-Verona catchment area, the development of a network of psychiatric services that is currently collecting patients for a multi-centre clinical trial, the production of systematic reviews in the field of antidepressants and antipsychotics, and the development of tools oriented to assist the World Health Organization to improve the rational use of psychotropic drugs in low and middle income countries. The projects of the Unit are financially supported by organisations not linked with drug companies.

3) Brain Imaging and Neuropsychology

Coordinator: Dr. Paolo Brambilla

The Brain Imaging and Neuropsychology laboratory was established in the 2003. A variety of neuroimaging and cognitive techniques are being used to investigate the neurobiological and neuropsychological bases of affective and psychotic spectrum disorders. In particular structural, diffusion, perfusion, spectroscopy and functional MRI investigations coupled with tests exploring laterality, executive functions and language are conducted on patients affected by bipolar disorders, unipolar disorders, schizoaffective disorders and schizophrenia to understand the common neurobiological underpinnings of major psychoses, integrating with psychopathology and social psychiatry. Specifically, one of the major aim of this research group is to increase the knowledge of possible neural circuitry and cognitive underpinnings shared by these conditions. Recently, the Unit has started multidisciplinary projects aimed at investigating the role of immune system in patients with major psychoses and the phenomics of psychoses and obsessions in twin population. International collaborations with other laboratories working in the field of brain imaging and neuropsychology have been established.

4) Integrating physical health, mental health and human rights

Coordinator: Professor Lorenzo Burti

Currently, three projects are ongoing: Ithaca, Helps and Physico address the factors necessary to create and successfully implement policy to promote the human rights, dignity and general health status of these patients. In fact, there is substantial evidence of an excess mortality and higher prevalence of physical co-morbidity in mental patients as compared to the general population; there is also widespread concern that conditions for many people with mental ill health, mental disability or dependency in treating and caring institutions fall far short of standards compatible with agreed human rights treaties and conventions, and do not consistently prevent abuse.

Moreover, the Unit is working on the Bio.Ve.D.A. project aiming to develop a register of eating-disorders taking advantage of the fact that the Unit of Psychotherapy, which hosts this Research Unit, has been appointed Regional

Centre for Eating Disorders. Finally, Self-Help II, now in the phase of processing data, investigates the contribution of a large consumer self-help group, based in Verona, to improve participation of mental patients in society at large.

5) Environmental, Clinical and Genetic Determinants of the Outcome of Mental Disorders

Coordinator: Professor Mirella Ruggeri

The Unit has worked since the '80s with the aim of characterizing the outcome of the mental disorders. Many longitudinal studies both in prevalence and incidence samples have been carried on to identify predictive patterns of favourable and unfavourable outcomes in naturalistic settings, using a multidimensional approach to include objective and subjective variables, and taking into account the relative role of clinical, social, service variables and genetic factors on the course of illness. Currently, the *Psychosis Incident Cohort Outcome Study (PICOS)*, a multicentric study involving 28 mental health services in the Veneto Region, is ongoing. The PICOS aims to test the relationship between clinical and genetic features of psychosis in an epidemiologically representative sample of first episode psychotic subjects. Recently, the Research Program GET UP (Genetics, Endophenotypes and Treatment: Understanding early Psychosis), with Professor Ruggeri as National Coordinator, has been funded by the Ministry of Health. It is constituted by four partner projects and it will shed light on several biological, psychological, and environmental issues that are presumably linked to psychosis onset. Moreover, the Unit is collaborating in the SGENE project, a large scale genome-wide association study of schizophrenia addressing variation in expressivity and contribution from environmental factors.

6) Clinical Psychology and Communication in Medicine

Coordinator: Professor Christa Zimmermann

During the last decade, the Unit has developed and standardised several instruments and methodologies to study doctor patient interactions both in Primary Care and in Psychiatry. The Unit has carried out the evaluation of the efficacy of training courses in improving communication skills of General Practitioners and Psychiatrists, and has studied the information-giving process in primary care consultations and in psychiatric outpatient intake interviews. Currently, the Unit coordinates two multicentre studies: one on patients' perception of the doctors' clinical communication skills (Verona, Liverpool, Utrecht), the other on the informative needs of breast cancer patients and their involvement in treatment decisions (Verona, Milan, Brescia, Ferrara).

Appointments and administrative positions of members of our Centre

Professor Francesco Amaddeo	<p>Scientific International Journals <i>Epidemiologia e Psichiatria Sociale</i> (Associate Editor)</p>
Dr Corrado Barbui	<p>Scientific Societies and Associations WHO Guidelines Development Group of the mhGAP Intervention Package (Member)</p> <p>Scientific National Journals <i>Dialogo Sui Farmaci</i> (Editorial Board) <i>Economia e Politica del Farmaco</i> (Editorial Board) <i>Informazioni Sui Farmaci</i> (Editorial Board)</p> <p>Scientific International Journals <i>Cochrane Depression, Anxiety, & Neurosis Group - The Cochrane Collaboration</i> (Editorial Board) <i>Epidemiologia e Psichiatria Sociale</i> (Associate Editor) <i>European Psychiatry</i> (Editorial Board) <i>Evidence Based Mental Health</i> (Associate Editor) <i>Internet Mental Health</i> (Editorial Board)</p>
Professor Lorenzo Burti	<p>Scientific Societies and Associations. Executive Committees: Società Italiana di Riabilitazione Psicosociale (SIRP) – Honorary President</p> <p>Scientific International Journals <i>Community Mental Health Journal</i> (International Correspondent) <i>Epidemiologia e Psichiatria Sociale</i> (Editorial Board)</p>
Dr Andrea Cipriani	<p>Scientific International Journals <i>Clinical Evidence: Depressive Disorders in Adults</i> - BMJ Publishing Group (Review Team Co-ordinator) <i>Cochrane Depression, Anxiety, & Neurosis Group</i>, The Cochrane Collaboration (Editorial Board) <i>Current Drug Therapy</i> (Advisory Board) <i>Epidemiologia e Psichiatria Sociale</i> (Editorial Board)</p>
Dr Antonio Lasalvia	<p>Scientific National Journals <i>Psichiatria di Comunità</i> (Executive Board)</p> <p>Scientific International Journals <i>Epidemiologia e Psichiatria Sociale</i> (Associate Editor)</p>
Dr Michela Rimondini	<p>Scientific Societies and Associations. Executive Committees: European Association of Communication in Healthcare (Teaching Board)</p>
Professor Mirella Ruggeri	<p>Scientific Societies and Associations. Executive Committees: Società Italiana di Epidemiologia Psichiatrica (SIEP) (Past President) European Network for Mental Health Services Evaluation - ENMESH (Chairperson) Association of European Psychiatrists (<i>Section of Epidemiology and Social Psychiatry</i>)</p> <p>Scientific National Journals <i>Psichiatria di Comunità</i> (Executive Board)</p> <p>Scientific International Journals <i>Epidemiologia e Psichiatria Sociale</i> (Associate Editor) <i>Social Psychiatry and Psychiatric Epidemiology</i></p>
Professor Michele Tansella	<p>Scientific Societies and Associations. Executive Committees:</p>

	<p>Società Italiana di Epidemiologia Psichiatrica (Honorary President) Association of European Psychiatrists (Section of Epidemiology and Social Psychiatry) World Psychiatric Association (Section on Epidemiology and Public Health) Commissione Nazionale Ricerca Sanitaria, Ministero della Salute Comitato Tecnico Scientifico (CTS) dell'IRCS – Fatebenefratelli di Brescia Expert Advisory Panel on Mental Health, World Health Organization</p> <p>Scientific National Journals <i>Psichiatria di Comunità</i> (Advisory Board) <i>Rivista di Psichiatria</i> (Advisory Board)</p> <p>Scientific International Journals <i>Archivos de Psiquiatria</i> (Advisory Board) <i>Acta Psychiatrica Scandinavica</i> (Advisory Board) <i>British Journal of Psychiatry</i> (International Editorial Board) <i>Early Intervention in Psychiatry</i> (Advisory Board) <i>Epidemiologia e Psichiatria Sociale</i> (Chief Editor) <i>European Journal of Psychiatry</i> (Advisory Board) <i>International Journal of Mental Health Systems</i> (Advisory Board) <i>International Journal of Methods in Psychiatric Research</i> (Advisory Board) <i>International Review of Psychiatry</i> (Advisory Board) <i>Psychological Medicine</i> (Advisory Board) <i>Social Psychiatry and Psychiatric Epidemiology</i> (Editor) <i>Socijalna Psihijatrija</i> (Advisory Board) <i>World Psychiatry</i> (Advisory Board)</p>
<p>Professor Christa Zimmermann</p>	<p>Scientific Societies and Associations. Executive Committees: European Association for Communication in Healthcare (Permanent Research Committee)</p> <p>Scientific International Journals <i>Epidemiologia e Psichiatria Sociale</i> (Editorial Board) <i>Patient Education and Counseling</i> (Associate Editor)</p>

The WHO Collaborating Centre of Verona and the Section of Psychiatry and Clinical Psychology of the Department of Medicine and Public Health (University of Verona) have established several international collaborations. During the 2008, the WHO Centre has been visited by several colleagues, who gave the following **LECTURES**:

- **“Comparing the mortality of psychiatric patients in two different community-based systems of care: presentation of data from Northern Norway”** by Professor Vidje Hansen (Department of Clinical Psychiatry, University of Tromsø, Norway).
- **World Health Organisation’s Mental Health Global Action Program”** by Dr Shekhar Saxena (Coordinator of Mental Health: Evidence and Research, WHO; Geneva, Switzerland).
- **“Schizophrenia, gene at last? Genome wide association and the discovering of the new psychosis genes”** by Professor David Collier (Social Genetic and Developmental Psychiatry, Institute of Psychiatry, King’s College, London UK).
- **“La risposta al placebo nelle sperimentazioni sull’efficacia degli antidepressivi”** by Dr Irving Kirsch (Department of Psychology, University of Hull, UK).

The WHO Collaborating Centre and the Section of Psychiatry and Psychology have also organized the following **CONFERENCES**:

“Imaging studies in schizophrenia and bipolar disorder: the new frontiers of modern psychopathology” and took place on the 20th of June. There were scientific contributors of:

- Professor Philippe Mc Guire (Division of Psychological Medicine, Institute of Psychiatry, London, UK),
- Dr Stefano Marenco (Clinical Brain Disorders Branch, NIMH, Bethesda, USA), Professor Monte Buchsbaum (Neuroscience PET laboratory, Mount Sinai School of Medicine, New York, USA),
- Dr Andrew McIntosh (University of Edinburgh, Kennedy Tower, Royal Edinburgh Hospital, Edinburgh)
- Professor Colm McDonald (Clinical Science Institute, National University of Ireland, Galway, Ireland)

“Quando i farmaci non bastano: la presa in carico a lungo termine delle persone con disturbi mentali gravi”. **Terza giornata veronese di informazione indipendente sugli psicofarmaci**. The congress took place on the 12th September 2008 and there were scientific contributors of:

- Professor Graham Thornicroft (Head of the Health Services Research Department, Institute of Psychiatry, King’s College London)
- Dr Stefan Leucht (Clinic for Psychiatry and Psychotherapy, Technical University of Munich, Germany; Zucker Hillside Hospital, Albert Einstein College of Medicine, New York, USA)
- Dr Mauro Percudani (Director, Unità Operativa Psichiatrica 62, Bollate)
- Professor Lorenza Magliano (University of Napoli, SUN)
- Dr Peppe Dell’Acqua (Dipartimento di Salute Mentale, Trieste)
- Dr Giuseppe Tibaldi (Azienda Sanitaria Locale 4, Torino)
- Sig.ra Tali Mattioli Corona (President of the Associazione Italiana Tutela Salute Mentale)

“Pediatric and adult psychosis: focus on schizophrenia and bipolar disorder” and took place on the 27th October. There were scientific contributors of:

- Professor Eva Meisenzahl (Section of Neuroimaging LMU, University of Munich, Germany)
- Professor Jair Soares (Center of Excellence for research and treatment of bipolar disorder, University of North Carolina, Chapel Hill, USA).

Research Grants

The following projects have been funded during the year 2008:

DESCRIPTION	Funding Institution	Scientific Coordinator	Total/Grant
“European networks for the promotion of the healthy living conditions in psychiatric care institutions” (HELPS)	Public Health Executive Agency (PHEA), London	Professor L. Burti	52.000,00 €
“GET UP (Genetics, Endophenotypes and Treatment: Understanding early Psychosis)”	Ministry of Health, Rome	Professor M. Ruggeri	760.000,00 €
“Systematic review of meta-analyses on the efficacy of SSRI and SNRI in the treatment of Major Depression”	German Medicine Health Authority	Dr. C. Barbui	20.000,00 €
“Anti Stigma Programme: European Network (ASPEN)”	European Commission, Directorate General for Health and Consumer Affaire, Public Health Executive Agency	Professor L. Burti	76.309,00 €
“Randomized evaluation of the effectiveness of lithium in addition to standard treatment in individuals with depression and suicide risk. An independent, pragmatic, multicentre, parallel-group, superiority trial (Studio CHAT)”	AIFA, Rome	Dr. C. Barbui	470.000,00 €
"I percorsi di cura dei pazienti inseriti nelle strutture residenziali psichiatriche. Analisi dei bisogni e dei costi."	MIUR ex 60%	Professor F. Amaddeo	5.596,00 €
	MIUR ex 60%	Dr. C. Barbui	7.471,00 €
“Efficacy and acceptability of escitalopram compared with other antidepressants: a systematic review and meta-analysis”	MIUR ex 60%	Dr. A. Cipriani	8.922,00 €
“The clinical correlates of Neurological Soft Signs in a representative sample of first episode psychosis patients”	MIUR ex 60%	Professor M. Ruggeri	7.016,00 €
	MIUR ex 60%	Professor C. Zimmermann	6.367,00 €
	MIUR ex 60%	Professor M. Tansella	7.316,00 €
	MIUR ex 60%	Professor L. Burti	3.809,00 €
Update of World Health Organization (WHO) the list of Essential Medicines for mental disorders	WHO, Geneva	Dr. C. Barbui	

The following institutions and funding bodies have provided financial support and Grants to Research projects of our Centre during the previous years:

DESCRIPTION	Funding Institution	Scientific Coordinator	Total/Grant
Implementing Mental Health Promotion Action (TANSIMHPA)	European Union	Professor M. Ruggeri / Dr. M. Stegagno	10.382,00 €
Donation (TANSPFIZER)	Pfizer Italia SRL	Professor M. Tansella	75.000,00 €
Mental Health Economics-European Network (AMADDLSE)	European Community (LSE), London	Professor F. Amaddeo	11.181,50 €
“Promuovere la ricerca scientifica per migliorare la qualità delle cure. Il Centro OMS di Ricerca sulla Salute Mentale, Verona” (TANSFOND06)	Fondazione CariVerona	Professor M. Tansella	600.000,00 €
“Identification and treatment of depression in comorbidity with physical illness” (RUGMSALU)	Ministry of Health, Rome	Professor M. Ruggeri	150.000,00 €
“Institutional Treatment, Human Rights and Care Assessment” (BURTITHACA)	Public Health Executive Agency (PHEA), London	Professor L. Burti	80.798,27 €
“Toward a new definition of schizophrenia: the biological basis of a core phenotype” (RUGJOINT07)	Glaxo SmithKline Spa and University of Verona	Professor M. Ruggeri	90.000,00 €
“Total body Imaging Anatomy”	University of Verona, Start Cup Veneto	Dr. P. Brambilla	44.770,00 €
“Economic evaluation of psychiatric care in Ukraina, Moldova and Georgia”	WHO-Regional Office for Europe, Copenhagen	Professor F. Amaddeo	11.680,44 €
“Genotype, endophenotype and phenotype: identifying etiopathogenetic factors of psychoses for the development of preventive models and individualised therapeutic strategies”	Veneto Region, Azienda Ospedaliera di Verona	Dr. A. Lasalvia	70.000,00 €
“Geographical distance, socio-economic status (SES) and utilization of community-based mental health services”	MIUR ex 60%	Professor M. Tansella	7.248,00 €
“Socio-economic Status, urbanicity and mental health”	Veneto Region, ULSS20	Professor F. Amaddeo	153.000,00 €
Donation for PICOS project	AITSAM	Professor M. Ruggeri	2.000,00 €
“The development of the Italian version of the Diagnostic Interview for Psychosis”	MIUR ex 60%	Professor F. Amaddeo	5.205,00 €
“Selective serotonin-reuptake inhibitors versus other types of pharmacotherapy for depression: systematic reviews and meta-	MIUR ex 60%	Dr. C. Barbui	12.494,00 €

analyses of randomised controlled trials”			
“Comparative efficacy and acceptability of 12 new generation antidepressants: a mixed-treatment comparison meta-analysis”	MIUR ex 60%	Dr. A. Cipriani	9.391,00 €
“Relationship between COMT and affective symptoms in schizophrenia: a 6-year follow-up study”	MIUR ex 60%	Professor M. Ruggeri	6.795,00 €
Citizens’ preferences concerning communication issues in medicine. A multicentre study	MIUR ex 60%	Professor C. Zimmermann	5.665,00 €
Update of World Health Organization (WHO) the list of Essential Medicines for mental disorders	WHO, Geneva	Dr. C. Barbui	

Main on-going research projects 2008-2009

Research Unit: Psychiatric Register, Economics and Geograpy of Mental Health

Head: Professor Francesco Amaddeo, MD, PhD

Mortality and avoidable mortality among psychiatric patients. A 20-year case register study
(G. Perini, A. Biggeri, L. Grigoletti, A. Rossi, C. Barbui, M. Tansella & F. Amaddeo)

Mortality for cancer in Verona in psychiatric patients and in the general population
(M. Tansella, F. Amaddeo, C. Barbui, G. Perini, L. Grigoletti, M. Nosè & A. Rossi)

Geographical distance, socio-economic status (SES) and utilization of community-based mental health services
(L. Grigoletti, J. Jones, G. Zulian, R. Pertile, V. Donisi, M. Ballarin, M. Tansella & F. Amaddeo)

Economic evaluation of psychiatric care in Ukraina, Moldova and Georgia
(F. Amaddeo)

Atlas of Mental Health Care in the Verona Health District
(G. Zulian, F. Amaddeo, L. Grigoletti)

Urbanicity and psychiatric care
(G. Zulian, V. Donisi, L. Grigoletti, R. Pertile, A. Rossi, E. Rigon, M. Tansella & F. Amaddeo)

Mobility of psychiatric patients in community-based mental health centres
(G. Zulian, V. Donisi, R. Pertile, L. Grigoletti, L. Rabbi & F. Amaddeo)

Continuity of care and outcome in a community-based system of mental health care
(A. Rossi, V. Vailati Venturi & F. Amaddeo)

The evaluation of a new funding system for mental health departments: results from a multi-centre Italian study (*I-psycost*)
(L. Grigoletti, A. Grassi, M. Boldrini, M. Chiappelli, M. Percudani, F. Catapano, A. Fiorillo, L. Bartoli, M. Bacigalupi, P. Albanese, S. Simonetti, F. Perali, P. De Agostini, M. Tansella & F. Amaddeo)

Reserch Unit: Clinical Psychopharmacology & Drug Epidemiology

Head: Dr. Corrado Barbui, MD

Monitoring the use of psychotropic drugs in clinical practice: analysis of a psychotropic drug register
(M. Nosè, E. Esposito, M. Bianchini, P. Petrosemololo & C. Barbui)

Selective serotonin-reuptake inhibitors versus other types of pharmacotherapy for depression: systematic reviews and meta-analyses of randomised controlled trials.
(A. Cipriani, M. Dieterich & C. Barbui)

Comparative efficacy and acceptability of 12 new generation antidepressants: a mixed-treatment comparison meta-analysis.
(A. Cipriani, T. A. Furukawa, G. Salanti, J.R. Geddes, R. Churchill, J. Higgins, H. McGuire, N. Watanabe, A. Nakagawa, I.M. Omori & C. Barbui)

Clozapine, Haloperidol, Aripiprazole Trial (CHAT): Randomized evaluation of the effectiveness of clozapine and aripiprazole versus clozapine and haloperidol in the treatment of schizophrenia. An independent, pragmatic, multicentre, parallel-group, superiority trial.
(C. Barbui, A. Cipriani, M. Nosè, A. Veronese, E. Esposito, P. Petrosemololo, S. Accordini & M. Tansella)

Randomized evaluation of the effectiveness of lithium in subjects with treatment-resistant depression and suicide risk. An independent, pragmatic, multicentre, parallel-group, superiority trial.
(C. Barbui, A. Cipriani, M. Nosè, M. Purgato, F. Girlanda, E. Esposito, G. Bisoffi & M. Tansella)

“Pharmacological treatment of mental disorders in primary health care”. Development of a booklet to assist WHO in increasing the rational use of psychotropic drugs in low and middle income countries
(C. Barbui, & A. Cipriani)

Subjective tolerability of antipsychotic drugs: an epidemiological perspective using the Liverpool University Neuroleptic Side-Effects Rating Scale
(M. Nosè, E. Esposito, M Bianchini, P. Petroseolo & C. Barbui)

Development of an essential health package to assist WHO to scale up care for mental, neurological and substance use disorders (mhGAP Intervention Package)
(C. Barbui)

Reserch Unit: Brain Imaging & Neuropsychology

Head: Dr. Paolo Brambilla, MD, PhD

Following Imaging and Resilience features in Schizophrenia and affective disorders (FIRST)
(M. Bellani, C. Perlini, L. Tomelleri, R. Cerini, R. Pozzi-Mucelli, A. Ferro, S. Cerruti, V. Marinelli, G. Rambaldelli, M. Tansella & P. Brambilla)

Prevention on Psychotic and Affective Events (PREVENT)
(M. Bellani, L. Tomelleri, C. Perlini, A. Ferro, M. Atzori, A. Beltramello, M. Tansella & P. Brambilla)

The neurobiological underpinnings of social psychiatry
(N. Dusi, G. Rambaldelli, C. Perlini, R. Cerini, R. Pozzi-Mucelli, M. Tansella & P. Brambilla)

Total Brain Imaging Analysis (TOBIA): cortical segmentation of human brain
(M. Atzori, A. Beltramello, M. Tansella & P. Brambilla)

Perfusion imaging studies in human brain
(G. Rambaldelli, D. Peruzzo, M. Atzori, A. Bertoldo, F. Zanderigo, M. Tansella, C. Cobelli & P. Brambilla)

Similarity based classification (SIMBAD)
(U. Castellani, D. Cheng, S. Cerruti, M. Bellani, G. Rambaldelli, M. Tansella, P. Brambilla, & V. Murino)

Study of laterality effects in the schizophrenia and bipolar disorder
(M. Bellani, C.A. Marzi, S. Savazzi, C. Perlini, S. Cerruti, A. Ferro, V. Marinelli, M. Tansella & P. Brambilla)

Vulnerability index in psychoses (VIPS): investigation of executive functions
(L. Tomelleri, S. Cerruti, V. Marinelli, D. Giusto, S. Frangou, M. Tansella & P. Brambilla)

Speech and language disturbances in schizophrenia
(C. Perlini, F. Fabbro, A. Marini, M. Tansella & P. Brambilla)

Investigation Of Shared Phenomics For Psychosis, Depression and Obsessions: a twin study
(C. Fagnani, M. Bellani, M. Tansella, M. Balestrieri, M.A. Stazi, V. Toccaceli, V. Patriarca, & P. Brambilla)

Research Unit: Integrating physical health, mental health and human rights

Head: Professor Lorenzo Burti, MD

Ithaca. Institutional treatment, human rights and care assessment
(L. Burti, C. Papa, S. Bernardelli, E. Berti, A. Lasalvia, G. Thornicroft & M. Tansella)

Helps. European network for promoting health of residents in psychiatric and social care institutions
(L. Burti, L. Berti, G. Imperadore, R. Kilian & Th. Becker)

Physico: Physical co-morbidity, poor health behaviour and health promotion
(L. Berti, G. Imperadore, M. Mazzi & L. Burti)

Self-Help II: The Verona self-help group: Patterns of members' participation and ability of the program to meet their expectations
(L. Berti, C. Bonetto, D. Cristofalo, E. Guerriero, P. Vanzini & L. Burti)

Bio.Ve.D.A.: Establishing a regional genetic and clinical register of eating disorders
(R. Siani, E. Bison, D. Di Pauli, C. Guarnier, L. Ravazzin, S. Tosato, S. Viccaro, P. Santonastaso & L. Burti)

Research Unit: Environmental, Clinical and Genetic Determinants of Outcome of Mental Disorders

Head: Professor Mirella Ruggeri, MD, PhD

GET UP (Genetics, Endophenotypes and Treatment: Understanding early Psychosis)

(M. Ruggeri, A. Lasalvia, S. Tosato, P. Brambilla, M. Bertani, C. Bonetto, S. Bissoli, S. Scala, K. De Santi, R. Mazzoncini & M. Tansella)

SGENE: A Large Scale Genome-Wide Association Study of Schizophrenia addressing variation in expressivity and contribution from environmental factors

(S. Tosato, C. Bonetto & M. Ruggeri)

Toward a new definition of schizophrenia: the biological basis of a core phenotype – Joint Project Glaxo/University of Verona

(S. Tosato, C. Bonetto, M. Bertani & M. Ruggeri)

Identification and treatment of depression in comorbidity with physical illness.

(M. Ruggeri, K. De Santi, D. Cappellari, A. Cipriani & C. Barbui)

PICOS- Psychosis Incident Cohort Outcome Study. A multisite collaborative project on the clinical, social and biological factors predicting outcome in the new cases of psychoses in the Veneto Region, Italy

(M. Ruggeri, A. Lasalvia, S. Tosato, P. Brambilla, M. Bertani, C. Bonetto, S. Bissoli, G. Marrella, K. De Santi, R. Mazzoncini, L. Lazzarotto, M. Tansella & Gruppo PICOS)

Genotype, endophenotype and phenotype: identifying etiopathogenetic factors of psychoses for the development of preventive models and individualised therapeutic strategies

(M. Ruggeri, S. Tosato, R. Mazzoncini, A. Lasalvia, C. Bonetto, D. Collier, M. Di Forti, R. Murray & M. Tansella)

Schizotaxia: epidemiology and clinical and neuropsychological validation

(M. Ruggeri, A. Lasalvia, S. Scala, M. Tansella, C. Bonetto, D. Berardi, G.F. Placidi & S. Scarone)

Implementing mental health promotion action (IMHPA Study)

(M. Ruggeri, M. Stegagno & M. Bertani)

Assessing self-perceived discrimination and stigma following the first episode of psychosis by using the DISC-11 Scale

(A. Lasalvia, N. Pellegrini, G. Thornicroft, M. Bertani, S. Bissoli, L. Lazzarotto & M. Ruggeri)

Relationship between the presence of candidate gene (Dysbindin, Neuregulin 1, BDNF) for schizophrenia and illness onset and severity: a 6-year follow-up study

(M. Ruggeri, S. Tosato, C. Bonetto, A. Lasalvia, D. Collier, M. Di Forti, R. Murray & M. Tansella)

International Study of Discrimination and Stigma Outcomes (INDIGO Multisite Study)

(L. Burti, A. Lasalvia, A. Ricci & M. Tansella)

Implementing NICE Guidelines of schizophrenia in routine clinical practice: a multisite project in Italian mental health services

(L. Burti, A. Lasalvia, S. Bissoli, D. Semisa & M. Ruggeri)

Comparison of drug abuse among patients at their first episode of psychosis in Italy and the UK

(R. Mazzoncini, A. Lasalvia, S. Tosato, R. Murray & M. Ruggeri)

Comparison of gender differences among patients at their first episode of psychosis in Italy and the UK

(M. Bertani, A. Lasalvia, R. Murray & M. Ruggeri)

Outcome evaluation of sheltered hostels for mentally disabled people in 17 Italian Regions.

(M. Ruggeri, A. Lasalvia, S. Bissoli, R. Radici, S. Zizolfi & G. Fioretti)

Burn out. A multicentre study in the Veneto Region

(A. Lasalvia, M. Bertani, S. Bissoli, C. Bonetto, M. Ruggeri & PICOS Group)

Physical health and lifestyle in patients at their psychosis onset. A multicentric European Study

(A. Lasalvia & M. Ruggeri)

Anti Stigma Programme: European Network (ASPEN)

(A. Lasalvia, N. Pellegrini, L. Burti & S. Zoppi)

Research Unit: Clinical Psychology & Communication in Medicine

Head: Professor Christa Zimmermann, Dr. Psychol., PhD.

Information giving in psychiatric and general hospital patients

(C. Goss, L. Del Piccolo, M.A. Mazzi, S. Fontanesi, F. Moretti, M. Rimondini & Ch. Zimmermann)

The involvement of psychiatric patients in the decision making process

(Ch. Zimmermann, L. Del Piccolo, C. Goss, T. Pozzan, M.A. Mazzi & M. Rimondini)

The evaluation of communication skills training in psychiatry.

(M. Rimondini, L. Del Piccolo, C. Goss, M.A. Mazzi & Ch. Zimmermann)

Validation of the consensus definitions of patient cues/ concerns and related physician behaviour during medical consultations.

(L. Del Piccolo, C. Goss, M.A. Mazzi, F. Moretti, M. Rimondini & Ch. Zimmermann)

Citizens' view and preferences concerning communication issues in medicine . A multicentre study

(F. Moretti, Jozién Bensing, Ian Fletcher, M. Rimondini, M.A. Mazzi, L. Del Piccolo, C. Goss, G. Deledda & Ch. Zimmermann)

The informative needs of breast cancer patients and their involvement in treatment decisions

(C. Goss, C. Zimmermann, M.A. Mazzi)